

**INSTRUMENT APPROACH
CHART (IAC)**

SÃO PAULO / Congonhas (SBSP)

ILS Y ou/ or LOC Y RWY 35L

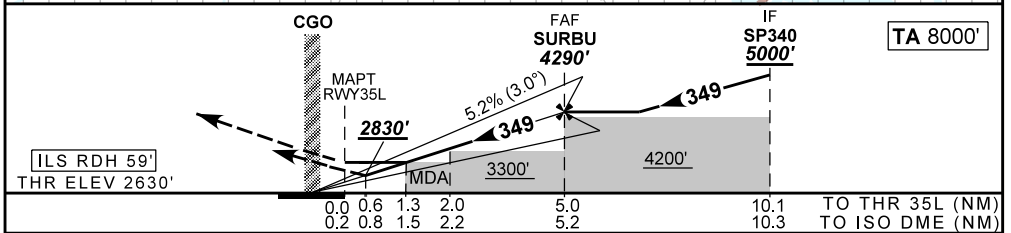
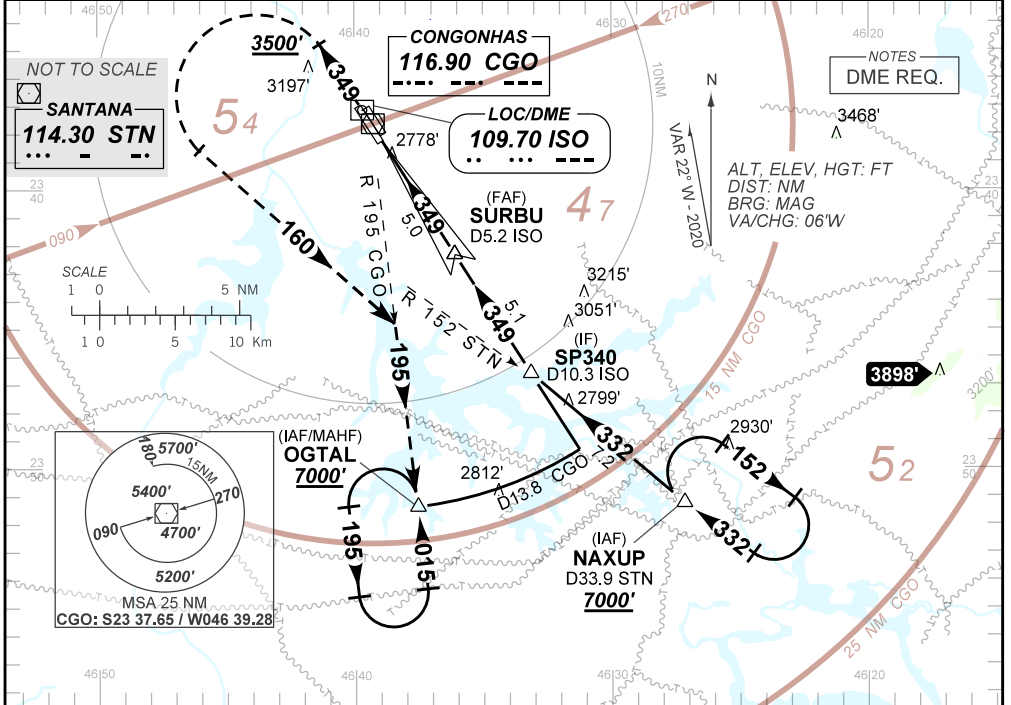
AD ELEV: 2631'

D-ATIS 127.65	APP SÃO PAULO 133.85 119.05 134.90 119.80 129.00 119.60 122.75 121.50	TWR SÃO PAULO 118.05 127.15 121.50	GNDC 121.90
-------------------------	---	--	-----------------------

LOC ISO 109.70 MHz	FINAL CRS 349°	FAF 4290'	CAT I DA / (OCH): 2830' / (200')	LOC MDA / (OCH): 3110' / (480')
------------------------------	--------------------------	---------------------	--	---

APCH Perdida: Subir para **7000'**, gradiente MNM 4%, no rumo **349** até **3500'**. Após, curvar à esquerda na proa **160** e interceptar RDL **195** CGO até OG TAL para espera. IAS MAX 220KT até interceptar RDL **195** CGO.
 Missed APCH: Climb to **7000'**, MNM gradient 4%, on course **349** until **3500'**. After, turn left on heading **160** to intercept **195** RDL CGO to OG TAL for holding. IAS MAX 220KT until intercept **195** RDL CGO.

RMK: NIL.



RW35L	1.3	2.0	3.0	4.0	SURBU	KT	090	110	130	150	170	190
ALT (HGT)	3110	3326	3644	3963	4290	FPM	500	600	700	800	900	NA
	480	696	1014	1333	1660	FAF-MAPT	NA					

STRAIGHT-IN	CAT	A	B	C	D	E	
CAT I	DA / (OCH)	2830' / (200')					NA
	ALS/NO ALS/ RVR ALS (m)	NIL / 1200 / NIL					
LOC	MDA / (OCH)	3110' / (480')					
	ALS/NO ALS/ RVR ALS (m)	NIL / 1600 / NIL		NIL / 2200 / NIL			
CIRCLING	MDA / (OCH)	NA					
	VIS (m)						

CHANGES: EQPT, MSA, PROC.