

CARTA DE APROXIMAÇÃO
POR INSTRUMENTOS (IAC)
INSTRUMENT APPROACH CHART (IAC)

BELO HORIZONTE / Tancredo Neves, INTL (SBCF)

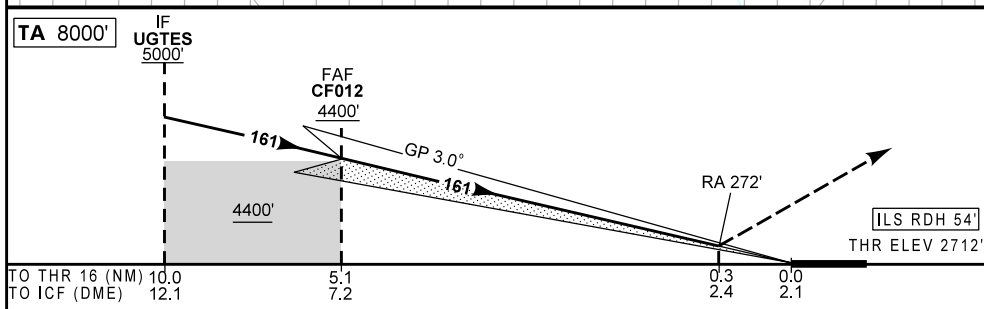
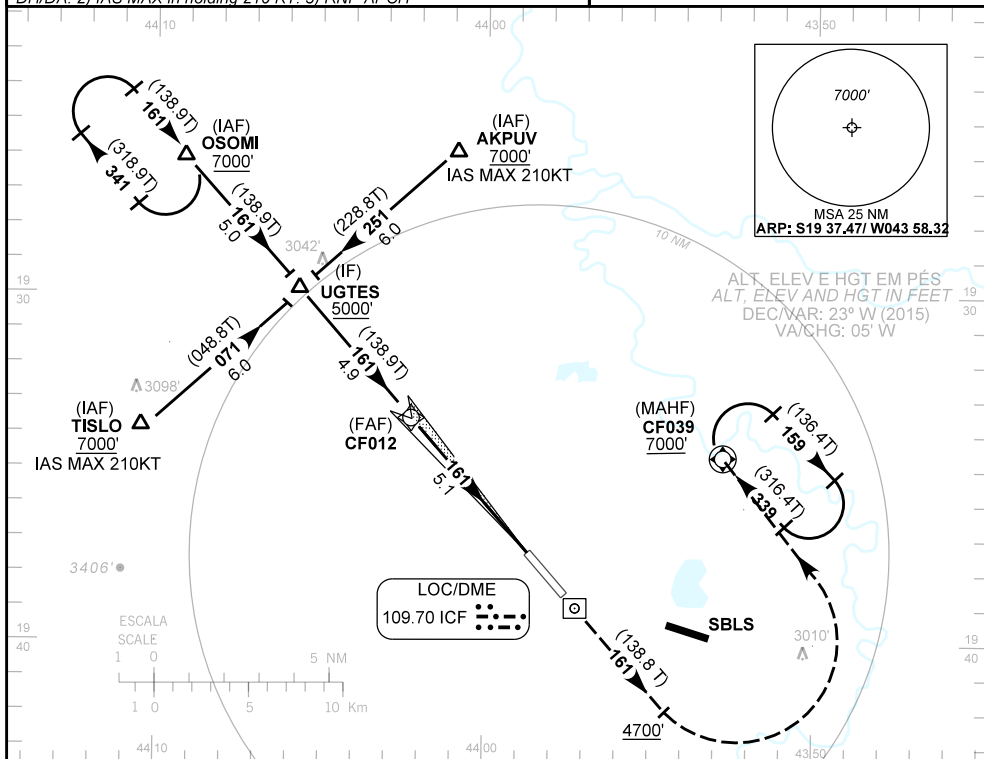
ILS T RWY 16

| | | | | |
|----------------|------------------|---|-------------------------------|-------------------------|
| AD ELEV: 2713' | D-ATIS 127.85 | APP BELO HORIZONTE 119.10 119.30 119.65 120.20 128.55 129.10 129.40 121.50 | TWR CONFINES 118.20 121.50 | GNDC CONFINES 121.90 |
|----------------|------------------|---|-------------------------------|-------------------------|

RMK: 1) ILS CAT I Autorização Requerida - ILS CAT I AR (mínimos reduzidos para pouso): Requer aprovação específica de OpSpec ou LOA e o uso do HUD até a DH/DA. 2) IAS MAX na espera: 210 KT. 3) RNP APCH
RMK: 1) ILS CAT I Authorization Required - ILS CAT I AR (minima lowered for landing): Requires specific OpSpec or LOA Approval and use of HUD to DH/DA. 2) IAS MAX in holding 210 KT. 3) RNP APCH

Aproximação Perdida: Subir para 7000'. Manter o rumo 161° até 4700'. Curvar à esquerda para espera em CF039.

Missed Approach: Climb to 7000'. Maintain course 161 until 4700'. Turn left for holding at CF039.



| | | | | | | | | | | | | | |
|------|------|------|------|------|------|--------|----------|-----|-----|-----|-----|-----|-----|
| IC | 4.0 | 3.0 | 2.0 | 1.0 | 0.3 | RWY 16 | KT | 090 | 110 | 130 | 150 | 170 | 190 |
| 4400 | 4040 | 3722 | 3403 | 3085 | 2862 | ALT | FPM | 500 | 600 | 700 | 800 | 900 | NA |
| 1688 | 1328 | 1010 | 691 | 373 | 150 | (HGT) | FAP-MAPT | NIL | | | | | |

| | | | | | | |
|-----------------------------|----------------------|------------------|---|---|---|----|
| POUZO DIRETO STRAIGHT-IN | CAT | A | B | C | D | E |
| CAT I AR | RA / DA / OCH | 272 / 2862 / 150 | | | | NA |
| | RVR (m) | 450 | | | | |
| CIRCULAR TO CIRCLE | MDA / OCH VIS (m) | NA | | | | |

REQUERIDA APROVAÇÃO ESPECIAL DO OPERADOR E DA AERONAVE
AIRCRAFT CERTIFICATION AND SPECIAL APPROVAL FROM THE OPERATOR REQUIRED

CHANGES: D-ATIS, WMM OPR, NDB, PROC.