

STANDARD DEPARTURE CHART  
INSTRUMENT (SID)

TERESINA/ Senador Petrônio Portella (SBTE)

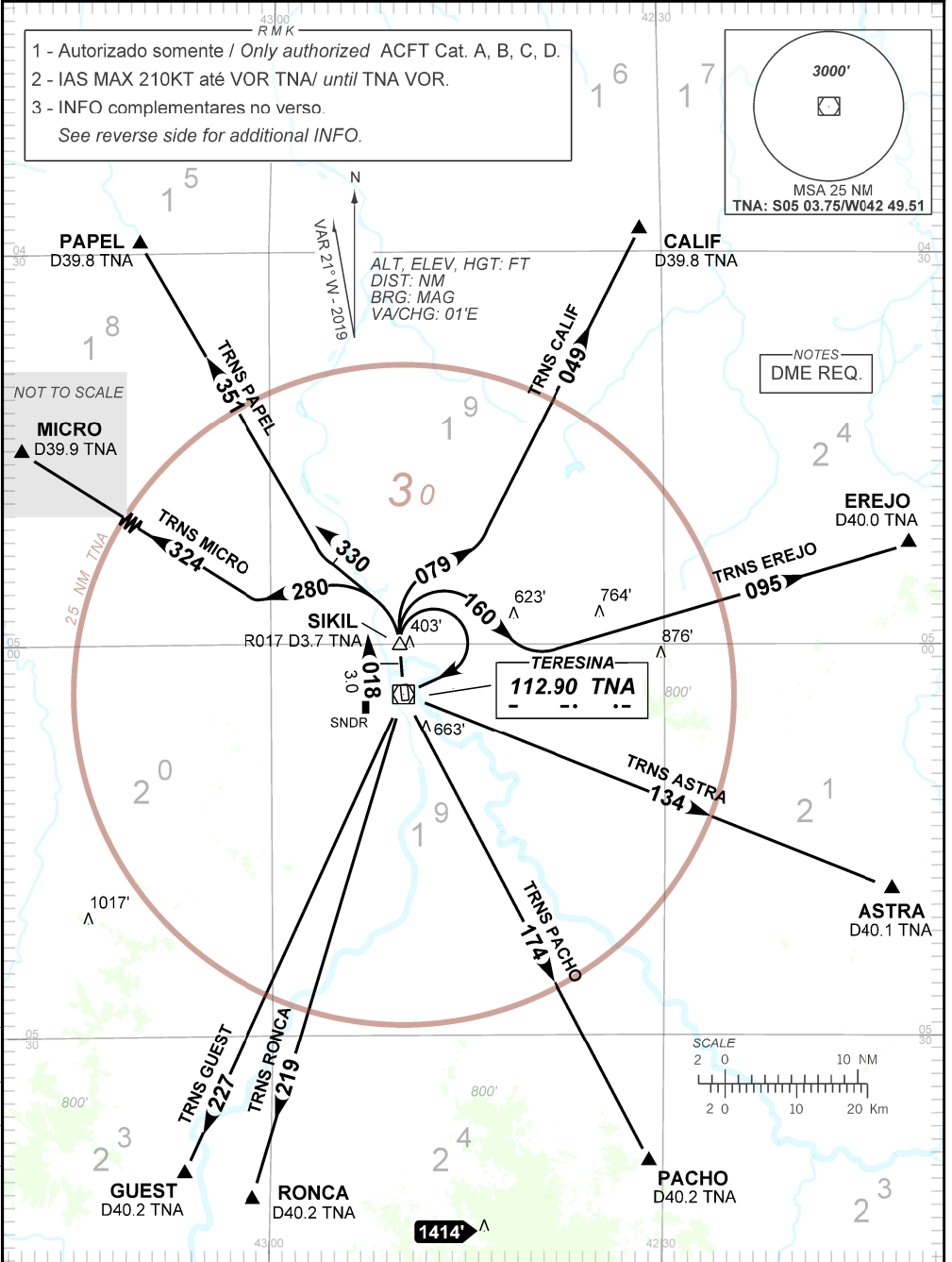
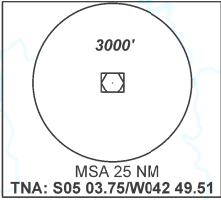
RWY 02

SIKIL 1D

AD ELEV: 220'

TA 4000'	TWR TERESINA 118.80	APP TERESINA 119.60	ACC AMAZÔNICO 126.15 128.30 133.70 121.50	ACC RECIFE 125.15 135.25 121.50
----------	------------------------	------------------------	--	------------------------------------

- 1 - Autorizado somente / Only authorized ACFT Cat. A, B, C, D.
- 2 - IAS MAX 210KT até VOR TNA/ until TNA VOR.
- 3 - INFO complementares no verso.  
See reverse side for additional INFO.



CHANGES: DEC. FREQ. IDENT. LAYOUT: PROC.

—RMK—

4 - Obstáculos próximos não considerados para cálculo do gradiente do procedimento (PDG):

*Close-in obstacles not considered for procedure gradient (PDG):*

- árvore/tree : a partir de/from THR 20, AZM 050, DIST 313M, ELEV 262'.
- poste/pole : a partir de/from THR 20, AZM 016, DIST 232M, ELEV 213'.
- poste/pole : a partir de/from THR 20, AZM 356, DIST 213M, ELEV 213'.
- chaminé/chimney : a partir de/from THR 20, AZM 034, DIST 888M, ELEV 285'.