

INSTRUMENT APPROACH  
CHART (IAC)

ITAUTUBA / Itaituba (SBIH)

AD ELEV: 99'

RNAV(GNSS) Y RWY 23

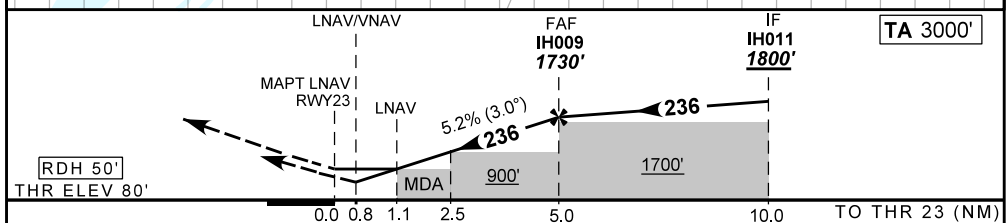
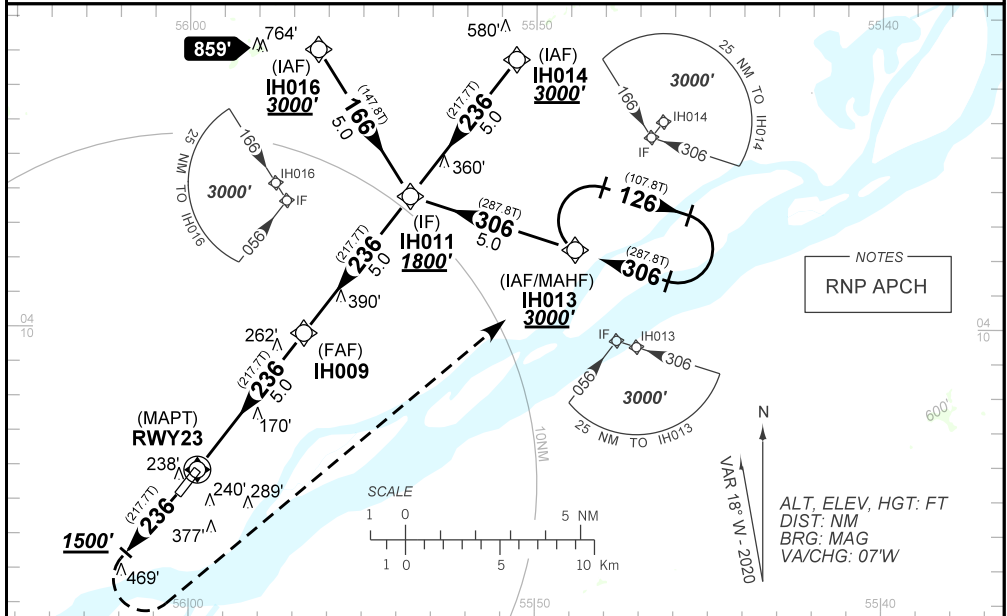
|             |                   |                         |  |
|-------------|-------------------|-------------------------|--|
| ATIS<br>NIL | APP<br>NIL        | AFIS ITAUTUBA<br>125.50 | GNDC<br>NIL  |
| NIL         | FINAL CRS<br>236° | FAF:<br>1730'           | LNAV/VNAV<br>DA / (OCH): 389' / (309')<br>LNAV<br>MDA / (OCH): 490' / (410') |

APCH Perdida: Subir para **3000'**. Manter rumo **236** até cruzar **1500'**. Então, curvar à ESQUERDA direto para IH013 para espera.

Missed APCH: Climb to **3000'**. Maintain course **236** until passing **1500'**. Then, turn LEFT direct to IH013 for holding.

RMK: Para sistemas não compensados BARO-VNAV, LNAV/VNAV não autorizado abaixo de -10°C ou acima de 50°C.

For uncompensated systems BARO-VNAV, LNAV/VNAV procedure not authorized below -10°C or above 50°C.



|       |     |     |      |      |       |  |          |     |     |     |     |     |     |
|-------|-----|-----|------|------|-------|--|----------|-----|-----|-----|-----|-----|-----|
| RWY23 | 1.1 | 2.0 | 3.0  | 4.0  | IH009 |  | KT       | 90  | 110 | 130 | 150 | 170 | 190 |
| ALT   | 490 | 767 | 1085 | 1404 | 1730  |  | FPM      | 500 | 600 | 700 | 800 | NA  | NA  |
| (HGT) | 410 | 687 | 1005 | 1324 | 1650  |  | FAF-MAPT |     |     | NA  |     |     |     |

|             |                         |                  |   |                  |    |   |
|-------------|-------------------------|------------------|---|------------------|----|---|
| STRAIGHT-IN | CAT                     | A                | B | C                | D  | E |
| LNAV/VNAV   | DA / (OCH)              | 389' / (309')    |   |                  | NA |   |
|             | ALS/NO ALS/ RVR ALS (m) | NIL / 1600 / NIL |   |                  |    |   |
| LNAV        | MDA / (OCH)             | 490' / (410')    |   |                  |    |   |
|             | ALS/NO ALS/ RVR ALS (m) | NIL / 1600 / NIL |   | NIL / 1900 / NIL |    |   |
| CIRCLING    | MDA / (OCH)             | NA               |   |                  |    |   |
|             | VIS (m)                 |                  |   |                  |    |   |

CHANGES: NEW CHART.