

**INSTRUMENT APPROACH
CHART (IAC)**

TIRIÓS / Óbidos, MIL (SBTS)

AD ELEV: 1129'

RNAV(GNSS) RWY 28

ATIS NIL	APP NIL	AFIS TIRIÓS 128.10	GNDC NIL
--------------------	-------------------	------------------------------	--------------------

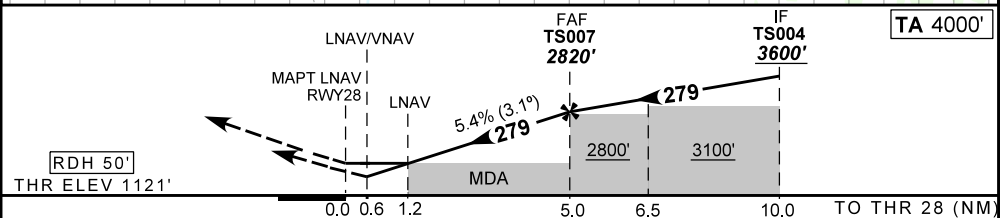
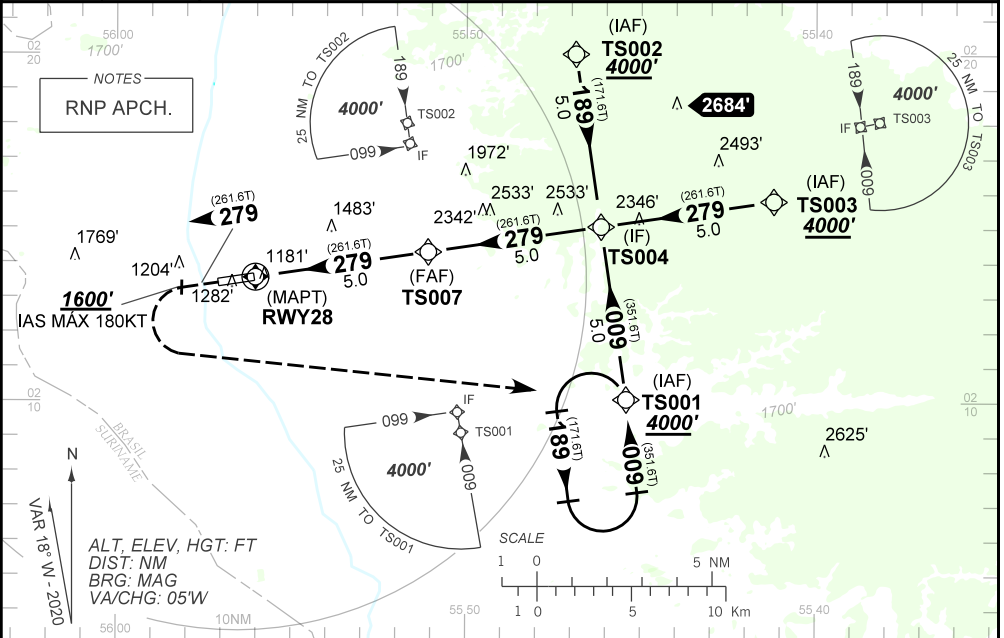
N/A	FINAL CRS 279°	FAF: 2820'	LNAV/VNAV DA / (OCH): 1371' / (250')	LNAV MDA / (OCH): 1560' / (440')
------------	--------------------------	----------------------	--	--

APCH Perdida: Subir para **4000'**. Manter rumo **279°** até passar **1600'**. Após, curvar à ESQUERDA direto TS001 para espera.

Missed APCH: Climb to **4000'**. Maintain course **279°** until passing **1600'**. After, turn LEFT direct to TS001 for holding.

RMK: Para sistemas não compensados Baro-VNAV, LNAV/VNAV NAO AUTORIZADO abaixo de 0°C ou acima de 50°C.

For uncompensated systems Baro-VNAV, LNAV/VNAV NOT AUTHORIZED below 0°C or above 50°C.



RWY28	1.2	2.0	3.0	4.0	TS007	KT	090	110	130	150	170	190
ALT	1560	1830	2160	2490	2820	FPM	500	600	700	800	NA	NA
(HGT)	440	709	1039	1369	1699	FAF-MAPT	NA	NA	NA	NA	NA	NA

STRAIGHT-IN	CAT	A	B	C	D	E
	DA / (OCH)	1371' / (250')				
LNAV/VNAV	ALS/NO ALS/ RVR ALS (m)	NIL / 1600 / NIL				
	MDA / (OCH)	1560' / (440')				
LNAV	ALS/NO ALS/ RVR ALS (m)	NIL / 1600 / NIL		NIL / 2000 / NIL		
	MDA / (OCH)	NA				
CIRCLING	MDA / (OCH)	NA				
	VIS (m)	NA				

CHANGES: NEW CHART.