

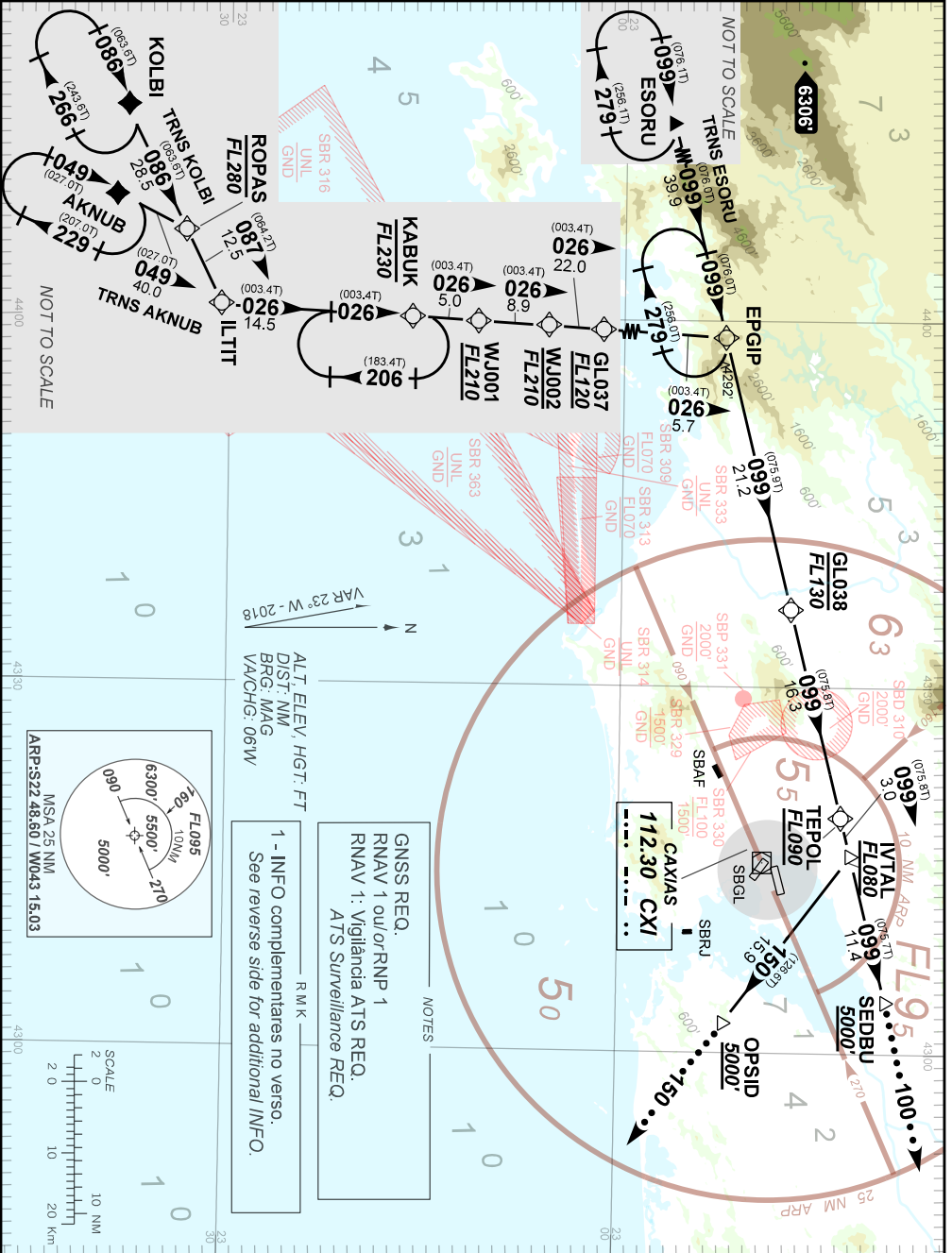
STANDARD ARRIVAL CHART
INSTRUMENT (STAR)

RIO DE JANEIRO / Galeão - Antônio Carlos Jobim, INTL (SBGL)
RWY 28/33

RNAV EPGIP 3A

AD ELEV: 28'

TA 7000'	D-ATIS 127.60	ACC CURITIBA 127.05 128.40 121.50	APP SÃO PAULO 121.35 124.70 123.90 125.60 121.50	APP RIO 129.80 125.95 119.00 120.55 134.95 121.25 128.90 119.35 124.95 121.50	TWR GALEÃO 118.00 118.20 121.50
----------	------------------	---	--	---	---------------------------------------



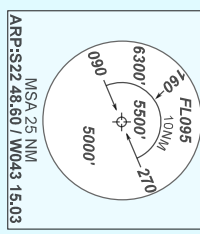
ALT. ELEV. / HGT. FT
DIST. NM
BRG. MAG
VA/CHG. 061W
VAR 23° W - 2018

NOTES

GNSS REQ.
RNAV 1 out/RNP 1
RNAV 1: Vigilância ATIS REQ.
ATS Surveillance REQ.

RMK

1 - INFO complementares no verso.
See reverse side for additional INFO.



CHANGES: EAC, FL, FREQ, IDENT, LAYOUT, PROC, TEXTUAL DESCRIPTION, WP1.

FALHA DE COMUNICAÇÃO
COMMUNICATION FAILURE

RWY 28

Complete chegada até SEDBU e execute procedimento autorizado pelo ATC. Ou, se durante vetoração na proa 100, manter esta proa, altitude MNM 5000' até 26 DME CXI. Então, curvar à direita para interceptar aproximação final.

RWY 33

Complete chegada até OPSID e execute procedimento autorizado pelo ATC. Ou, se durante vetoração na proa 150, manter esta proa, altitude MNM 5000' até 25 DME CXI. Então, curvar à direita para interceptar aproximação final.

RWY 28

Complete arrival until SEDBU and execute procedure authorized by ATC. Or, if under vectoring on heading 100, maintain this heading, MNM altitude 5000' until 26 DME CXI. Then, turn right to intercept final approach.

RWY 33

Complete arrival until OPSID and execute procedure authorized by ATC. Or, if under vectoring on heading 150, maintain this heading, MNM altitude 5000' until 25 DME CXI. Then, turn right to intercept final approach.