

**INSTRUMENT APPROACH  
CHART (IAC)**

**ALTAMIRA / Altamira (SBHT)**

**AD ELEV: 368'**

**RNAV(GNSS) RWY 25**

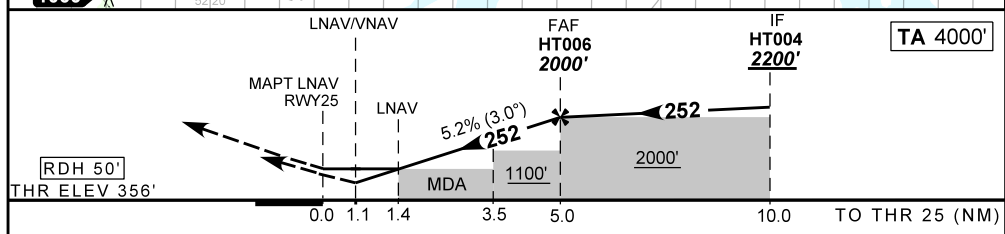
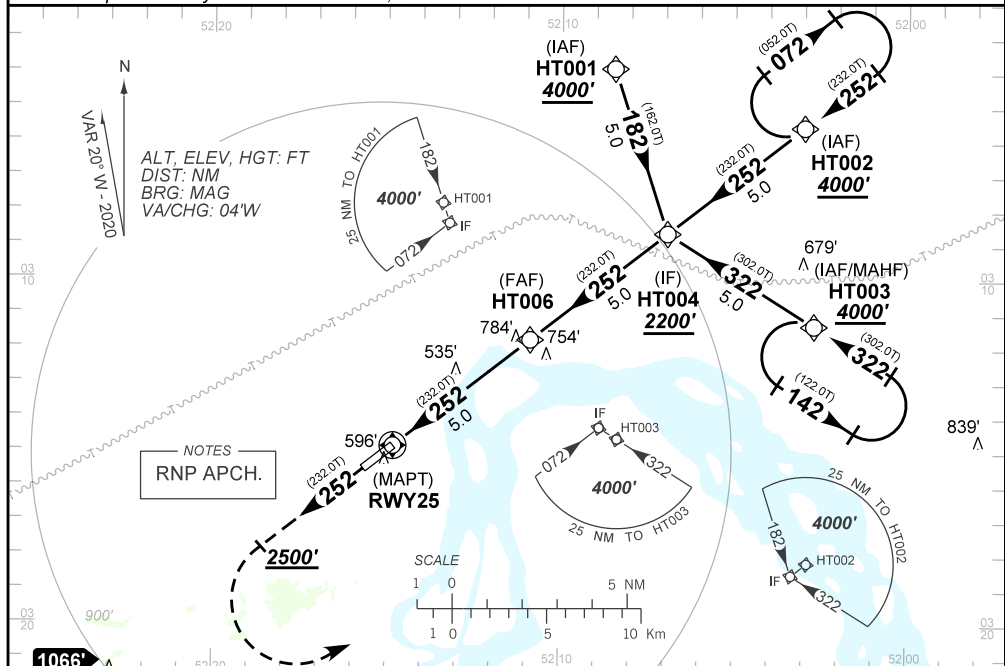
ATIS NIL	APP NIL	AFIS ALTAMIRA 125.85	GNDC NIL
-------------	------------	-------------------------	-------------

N/A	FINAL CRS 252°	FAF: 2000'	LNAV/VNAV DA / (OCH): 746' / (390')	LNAV MDA / (OCH): 850' / (500')
-----	-------------------	---------------	--	------------------------------------

APCH Perdida: Subir para **4000'**. Manter rumo **252°** até **2500'**. Após, curvar à ESQUERDA direto HT003 para espera.

Missed APCH: Climb to **4000'**. Maintain **252°** course until **2500'**. After, turn LEFT direct HT003 for holding.

RMK: Para sistemas não compensados BARO-VNAV, LNAV/VNAV não autorizado abaixo de 0°C ou acima de 50°C.  
For uncompensated systems BARO-VNAV, LNAV/VNAV not authorized below 0°C or above 50°C.



RWY25	1,4	2,0	3,0	4,0	5,0		KT	090	110	130	150	170	190
ALT	850	1043	1361	1680	2000		FPM	500	600	700	800		NA
(HGT)	500	687	1005	1324	1644		FAF-MAPT						NA

STRAIGHT-IN	CAT	A	B	C	D	E
LNAV/VNAV	DA / (OCH)	746' / (390')			NA	NA
	ALS/NO ALS/ RVR ALS (m)	NIL / 1800 / NIL				
LNAV	MDA / (OCH)	850' / (500')			NIL / 2300 / NIL	NA
	ALS/NO ALS/ RVR ALS (m)	NIL / 1800 / NIL				
CIRCLING	MDA / (OCH)	NA				
	VIS (m)	NA				

CHANGES: NEW CHART.