

INSTRUMENT APPROACH
CHART (IAC)

CURITIBA / Afonso Pena, INTL (SBCT)

ILS K or LOC K RWY 15

AD ELEV: 2989'

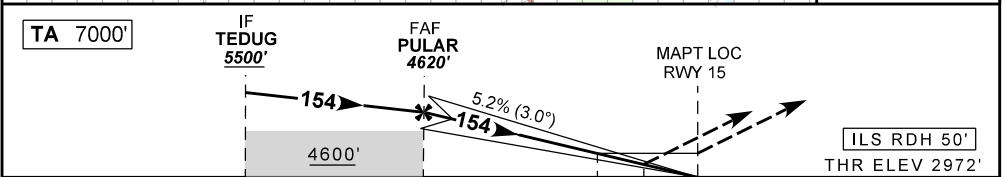
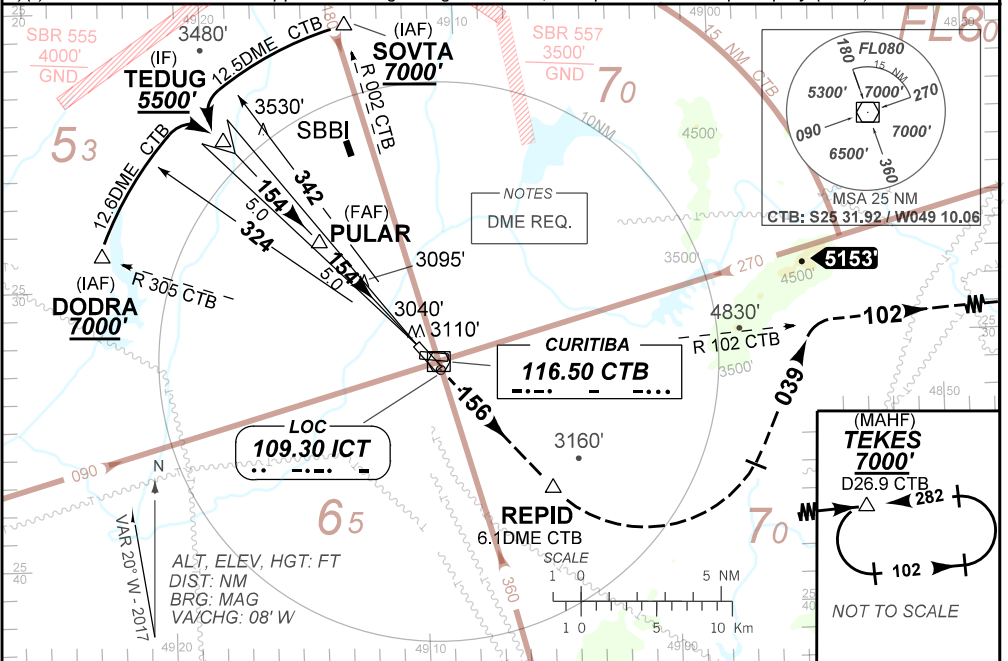
D-ATIS 127.80	APP CURITIBA					TWR CURITIBA 118.15 121.50	GNDC CURITIBA 121.90
LOC ICT 109.30 MHz	FINAL CRS 154°	FAF: 4620'	CAT I DA / (OCH): 3172' / (200')	LOC MDA / (OCH): 3450' / (480')			

APCH Perdida: Subir para **7000'**. Manter RDL **156** CTB até REPID. Curvar à ESQUERDA e manter a proa **039** até interceptar RDL **702** CTB. Curvar à DIREITA RDL **102** CTB até TEKES para espera.

Missed Approach: Climb to **7000'**. Maintain **156** CTB RDL until REPID. Turn LEFT and maintain heading **039** until intercepting **102** CTB RDL. Turn RIGHT **102** CTB RDL until TEKES for holding.

RMK: 1) (*) VIS RVR ALS 550m para aproximação utilizando Diretor de Voo, Piloto Automático ou Head-Up Display (HUD).

1) (*) VIS RVR ALS 550m for approach using a Flight Director, Autopilot or Head-Up Display (HUD).



TO THR 15 (NM)	10.0	5.0	1.4	0.5	0.0
TO CTB (DME)	11.0	6.0	2.4	1.5	1.0

FAF	4.0	3.0	2.0	1.4	RWY15	
4620	4296	3978	3659	3450	ALT	
1648	1324	1006	687	478	(HGT)	
KT	090	110	130	150	170	190
FPM	500	600	700	800	900	NA
FAF-MAPT	NA					

STRAIGHT-IN	CAT	A	B	C	D	E
CAT I	DA / (OCH)	3172' / (200')				
	ALS/NO ALS/ RVR ALS (m)	800 / 1200 / 700(*)				
LOC	MDA / (OCH)	3450' / (480')				
	ALS/NO ALS/RVR ALS (m)	800 / 1600 / NIL		1600 / 2400 / NIL		
CIRCLING	MDA / (OCH)	NA				
	VIS (m)	NA				

CHANGES/PROC. RMK.