

**INSTRUMENT APPROACH  
CHART (IAC)**

**ARARAQUARA / Bartolomeu de Gusmão (SBAQ)**

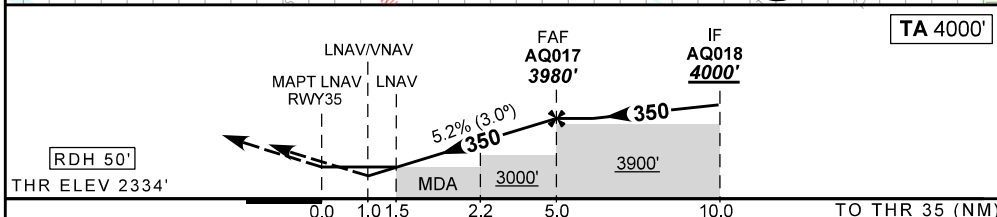
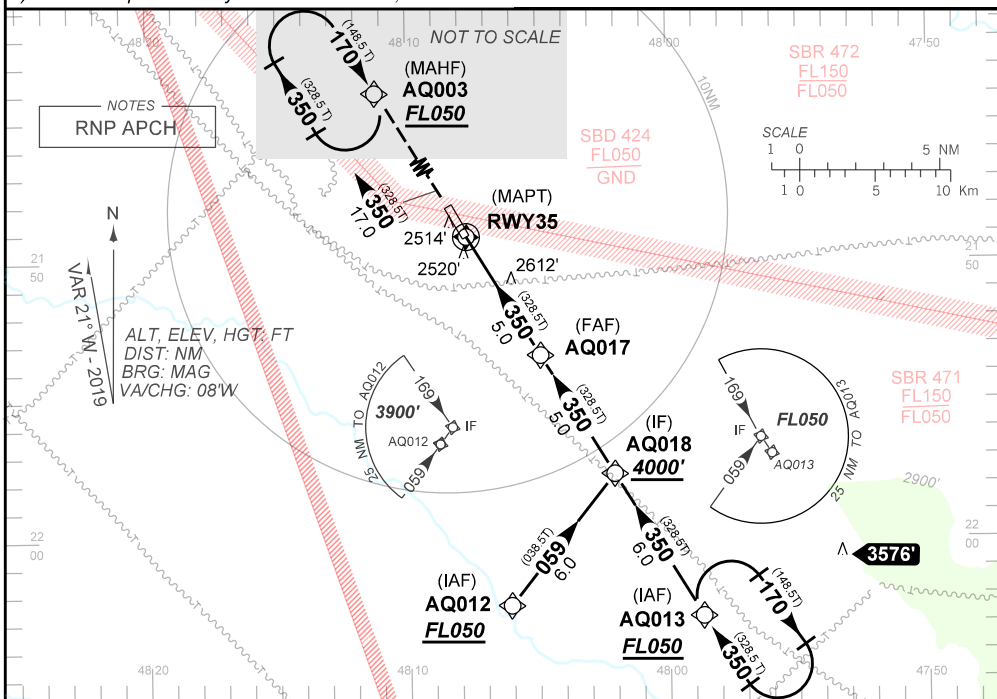
**RNAV (GNSS) RWY 35**

**AD ELEV: 2334'**

ATIS <b>NIL</b>	APP ACADEMIA <b>120.10 122.40 121.50</b>		AFIS ARARAQUARA <b>131.60</b>	GNDC <b>NIL</b>
<b>N/A</b>	FINAL CRS <b>350°</b>	FAF <b>3980'</b>	LNAV/VNAV <b>DA / (OCH): 2700' / (370')</b>	LNAV <b>MDA / (OCH): 2860' / (530')</b>

APCH Perdida: Subir para **FL050** direto AQ003 para espera.  
Missed APCH: Climb to **FL050** direct to AQ003 for holding.

RMK: 1) Para sistemas não compensados Baro-VNAV, LNAV/VNAV NÃO AUTORIZADO abaixo de -20°C.  
1) For uncompensated systems Baro-VNAV, LNAV/VNAV NOT AUTHORIZED below -20°C.



RWY35	1.5	2.0	3.0	4.0	AQ017
ALT	2860	3020	3340	3650	3980
(HGT)	526	686	1006	1316	1646

KT	090	110	130	150	170	190
FPM	500	600	700	800	900	1000
FAF-MAPT	NA					

STRAIGHT-IN	CAT	A	B	C	D	E
	DA / (OCH)	2700' / (370')				
LNAV/VNAV	ALS/NO ALS/ RVR ALS (m)	NIL / 1600 / NIL		NIL / 1700 / NIL		
	MDA / (OCH)	2860' / (530')				
LNAV	ALS/NO ALS/ RVR ALS (m)	NIL / 1600 / NIL		NIL / 2400 / NIL		
	MDA / (OCH)	NA				
CIRCLING	MDA / (OCH)	NA				
	VIS (m)	NA				

CHANGES: PROCEDURE