

AD ELEV: 34'

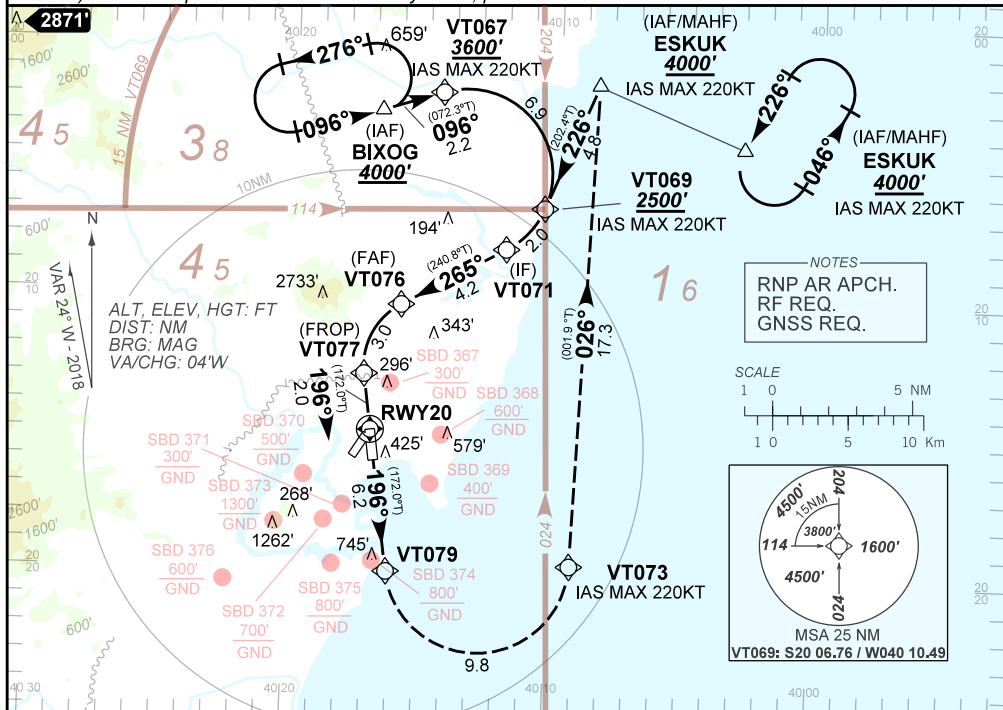
RNAV(RNP) X RWY 20

ATIS 127.575	APP VITÓRIA 119.85 121.50		TWR VITÓRIA 118.10 121.50	GNDC VITÓRIA 121.95
N/A	FINAL CRS 196°	FAF 1660'	RNP 0.3 DA / (OCH): 420' / (402')	N/A

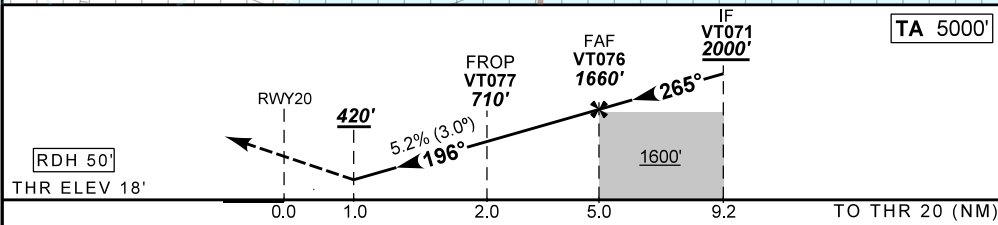
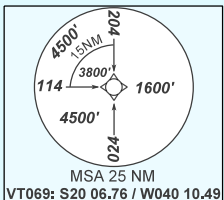
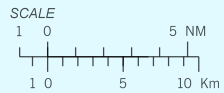
APCH Perdida: 1) Subir para **4000'**. Manter rumo **196** até VT079. Curvar à ESQUERDA até VT073. Após, manter rumo **026** até ESKUK para espera. 2) IAS MAX 220KT para espera em BIXOG.

Missed APCH: 1) Climb to **4000'**. Maintain course **196** up to VT079. Turn LEFT up to VT073. Then maintain course **026** up to ESKUK for holding. 2) IAS MAX 220KT for holding at BIXOG.

RMK: 1) For uncompensated BARO-VNAV systems, procedure not authorized below -10°C or above 45°C.



NOTES
RNP AR APCH.
RF REQ.
GNSS REQ.



RWY20	1.0	VT077	3.0	4.0	VT076	
ALT	420	710	1023	1341	1660	
(HGT)	386	687	1005	1323	1647	

KT	090	110	130	150	170	190
FPM	500	600	700	800	900	NA
FAF-MAPT				NA		

STRAIGHT-IN	CAT	A	B	C	D	E
RNP 0.3	DA / (OCH)	420' / (402')		420' / (402')		NA
	ALS/SNO ALS/ RVR ALS (m)	NIL / 1600 / NIL		NIL / 1900 / NIL		

AUTORIZAÇÃO ESPECIAL PARA AERONAVE E TRIPULAÇÃO REQUERIDA
SPECIAL AUTHORIZATION FOR AIRCRAFT AND CREW REQUIRED

Aprovação Especial (ANAC IS 01.001)
Específica (ANAC IS 01.001)

CHANGES: NEW CHART.