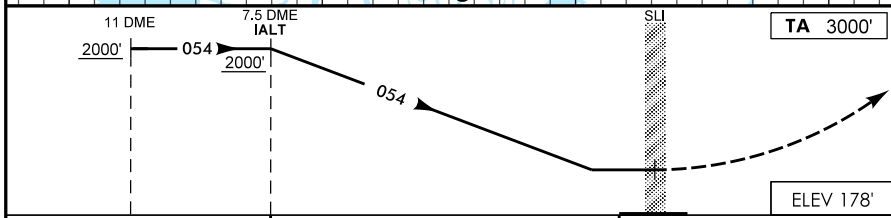
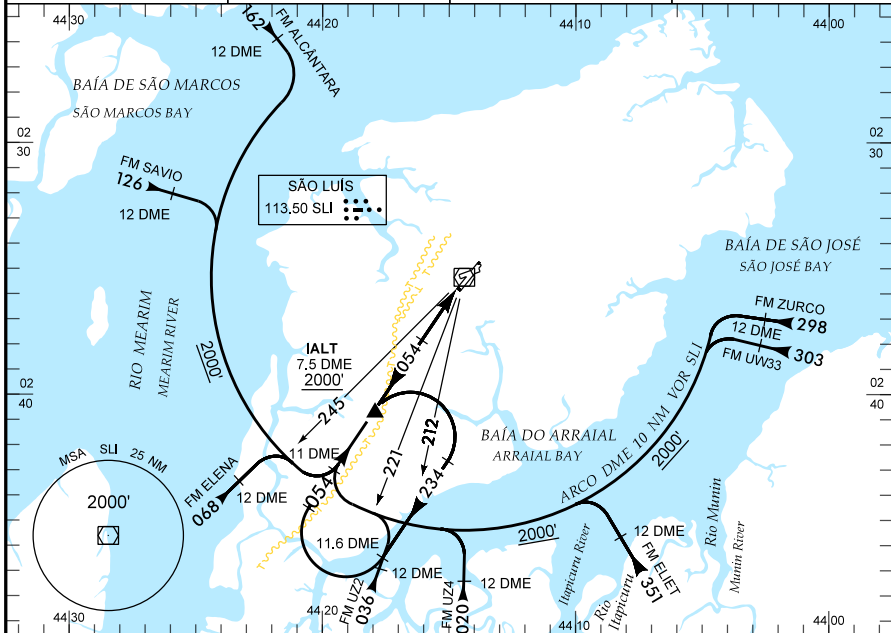


SÃO LUÍS / MARECHAL CUNHA MACHADO, INTL  
 MA-BRASIL  
**VOR/DME RWY 06**

**IAC - SBSL** WGS-84

ATIS NIL	APP SÃO LUÍS 119.10 121.50	TWR SÃO LUÍS 118.90	GNDC SÃO LUÍS NIL
-------------	-------------------------------	------------------------	----------------------



**APROXIMAÇÃO PERDIDA**  
 MISSED APPROACH

SUBIR PARA 2000 FT NA RADIAL 054. APÓS, CURVAR À ESQUERDA E EXECUTAR O ARCO DE 10 NM PARA ESPERA NO REP IALT.  
 CLIMB TO 2000 FT ON RDL 054, THEN, TURN LEFT AND EXECUTE 10 NM ARC FOR HOLDING AT IALT REP.

RMK: NIL

C	POUSO DIRETO RWY 06	STRAIGHT-IN TO RWY 06	IFR OPS	DIURNA / NOTURNA DAY / NIGHT	PARA CIRCULAR TO CIRCLING			
					( RMK )			
A	VOR/DME				CAT	MDA	TETO CEILING	VIS
T	MDA 560'	TETO CEILING 400'		A				
A	VIS				B	680'	3600 M	4000 M
B	1600 M				C	900'		
C	2000 M				D		3600 M	4000 M
D	2000 M				E	900'		
E	2000 M							

RAZÃO DE DESCIDA NA APROXIMAÇÃO FINAL RATE OF DESCENT ON FINAL APPROACH						
KT	090	110	130	150	170	190
FPM	450	550	650	750	900	1000