

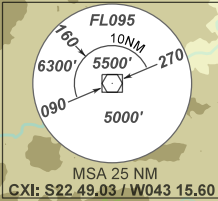
STANDARD DEPARTURE CHART
INSTRUMENT (SID)

RIO DE JANEIRO / Galeão - Antônio Carlos Jobim, INTL (SBGL)
RWY 28/33

AD ELEV: 28'

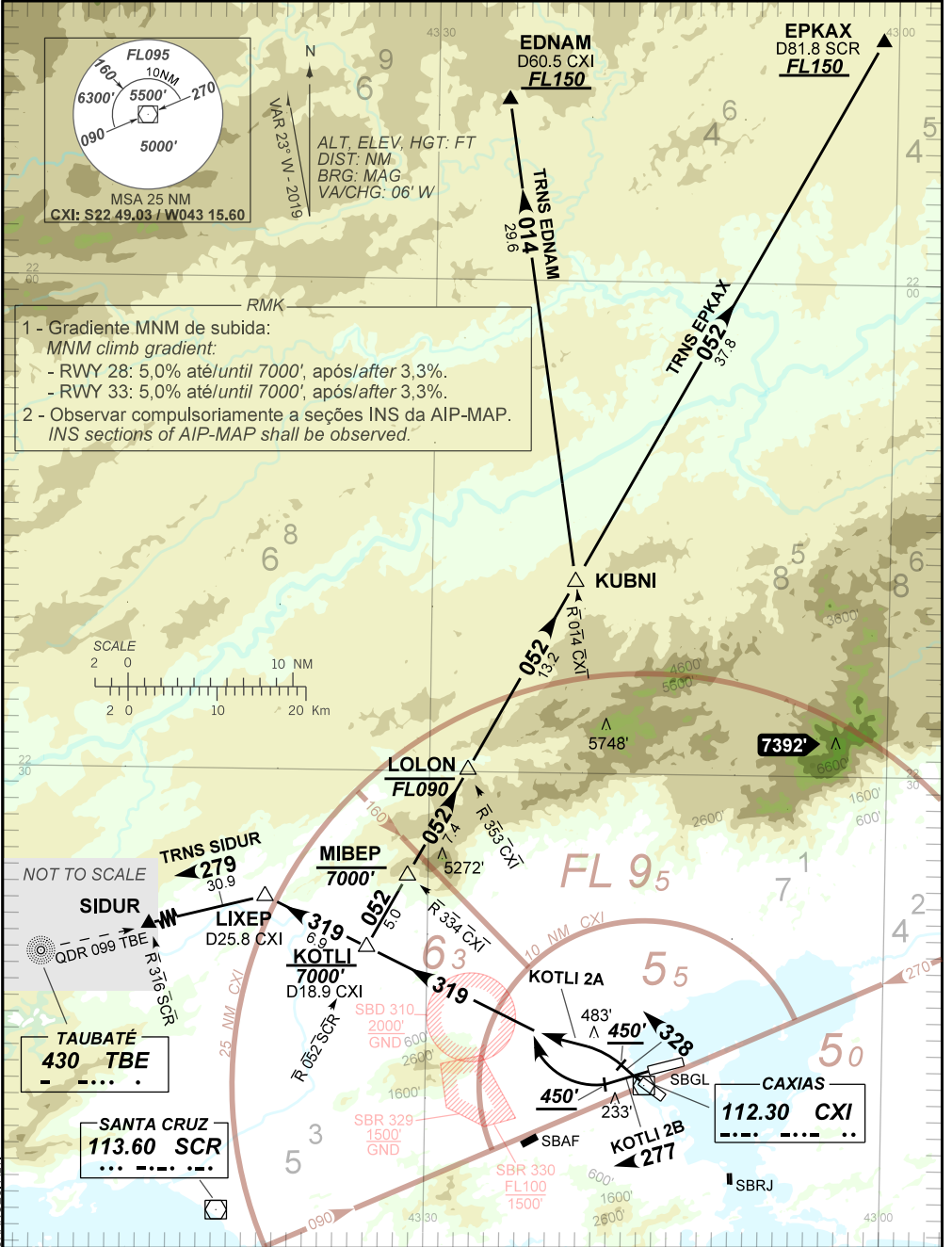
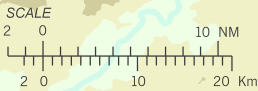
KOTLI 2A, 2B

TA 7000'	TWR GALEÃO 118.00 118.20 121.50	APP RIO 134.40 121.25 119.725 132.975 121.50	APP SÃO PAULO 120.85 125.60 129.00 134.90 121.50	ACC CURITIBA 124.00 125.35 128.25 121.50
----------	------------------------------------	--	--	--



ALT, ELEV, HGT: FT
DIST: NM
BRG: MAG
VA/CHG: 06' W

- 1 - Gradiente MNM de subida:
MNM climb gradient:
- RWY 28: 5,0% até/until 7000', após/after 3,3%.
 - RWY 33: 5,0% até/until 7000', após/after 3,3%.
- 2 - Observar compulsoriamente a seções INS da AIP-MAP.
INS sections of AIP-MAP shall be observed.



CHANGES: ALT.