

INSTRUMENT APPROACH
CHART (IAC)

VITÓRIA / Eurico de Aguiar Salles (SBVT)

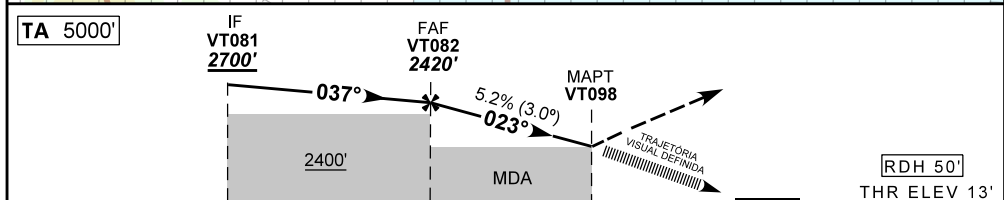
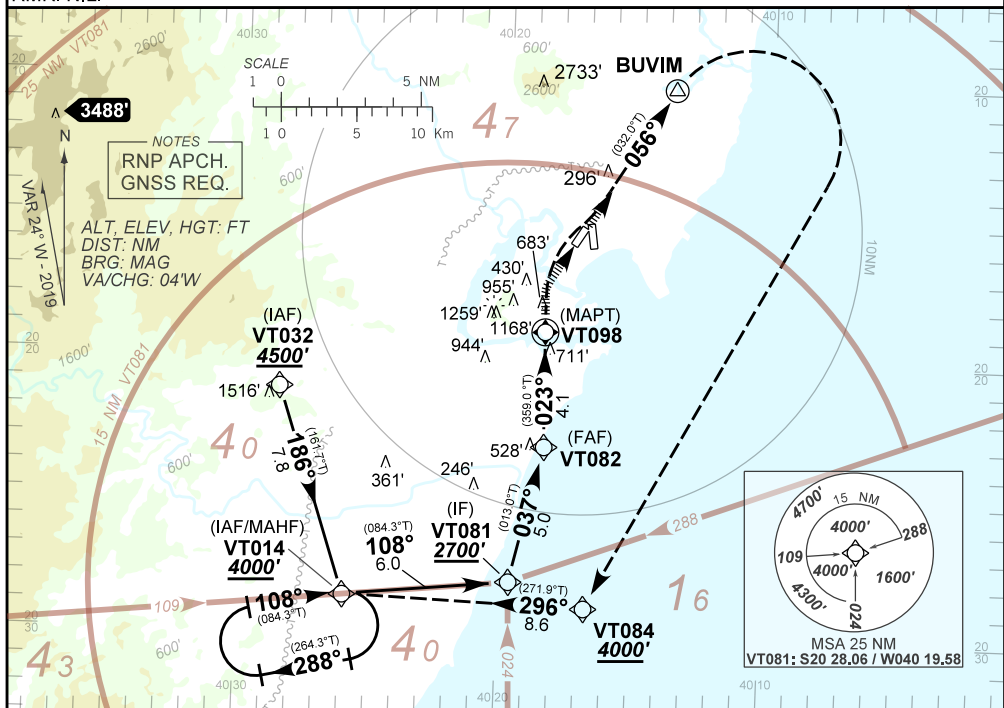
AD ELEV: 34'

RNAV (GNSS) B RWY 06

ATIS 127.575	APP VITÓRIA 119.85 121.50	TWR VITÓRIA 118.10 121.50	GNDC VITÓRIA 121.95
N/A	FINAL CRS 023°	FAF 2420'	LNAV MDA / (OCH): N/A
		LNAV/VNAV DA / (OCH): N/A	LNAV MDA / (OCH): N/A

APCH Perdida: Subir para **4000'**. Curvar à DIREITA rumo **056** até BUVIM. Curvar à DIREITA direto VT084. Curvar à DIREITA, rumo **296** até VT014 para espera.
Missed APCH: Climb to **4000'**. Turn RIGHT course **056** up to BUVIM. Turn RIGHT direct to VT084. Turn RIGHT course **296** up to VT014 for holding.

RMK: NIL.



TO MAPT (NM) 9.1 4.1 0.0

VT082	4.0	3.0	2.0	1.0	VT098	RWY06	KT	090	110	130	150	170	190
2420	2387	2068	1750	1431	1100	ALT	FPM	500	600	700	800	NA	NA
2386	2353	2034	1716	1397	1070	(HGT)	FAF-MAPT	NA					

STRAIGHT-IN	CAT	A	B	C	D	E
LNAV	MDA / (OCH)			NA		
	ALS/NO ALS/ RVR ALS (m)					
LNAV/VNAV	DA / (OCH)			NA		
	ALS/NO ALS/ RVR ALS (m)					
CIRCLING	MDA / (OCH)	1100' / (1070')				NA
	MS (m)	NIL / 2000 / NIL	NIL / 2400 / NIL	NIL / 4900 / NIL		

CHANGES: ALT. PROC.

AIRAC AMDT 08/19 23 MAY 19

DEPARTAMENTO DE CONTROLE DO ESPAÇO AÉREO

SBVT_IAC_021 1/2
IAC RNAV (GNSS) B RWY 06

AD ELEV: 34'



TRAJETÓRIA VISUAL DEFINIDA RWY 06
VISUAL PRESCRIBED TRACK RWY 06

1) O piloto deverá estar em contato visual e prover sua própria separação com as referências visuais:

Torre, Chaminés da Área Portuária e Obstáculos Naturais.

The pilot should have visual contact and provide his own separation with the visual references:

Tower, Chimneys of the port area and Natural Obstacles.

2) Em caso de arremetida durante a manobra para circular: Subir para 4000' e interceptar a trajetória de aproximação perdida publicada.

In case of go around during the visual manoeuvring: Climbing to 4000' and intercept the trajectory of the missed approach published.

CHANGES: ALT. PROC.