

**INSTRUMENT APPROACH  
CHART (IAC)**

**BRASÍLIA / Pres. Juscelino Kubitschek, INTL (SBBR)**

**ILS W RWY 11L**

**AD ELEV: 3498'**

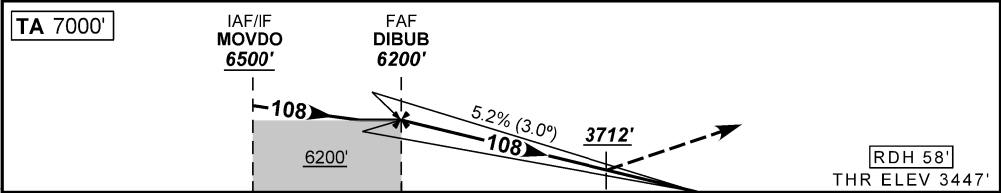
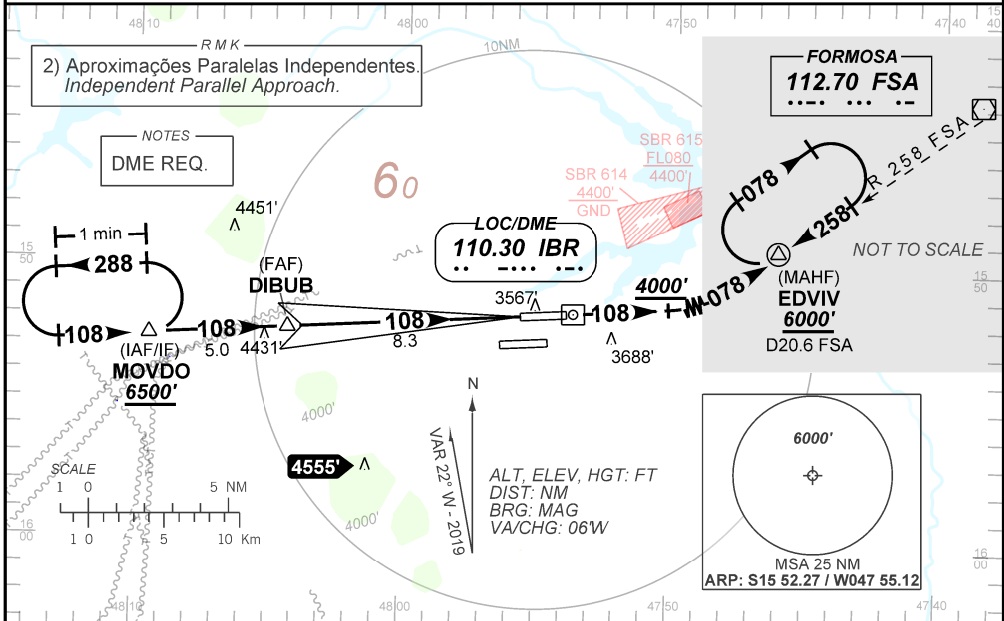
D-ATIS <b>127.80</b>	APP BRASÍLIA <b>120.65 129.15 129.60 119.50 121.50</b>	TWR BRASÍLIA <b>118.10 118.45 118.75 121.50</b>	GND C BRASÍLIA <b>121.80 121.95</b>
-------------------------	---	--	--

LOC IBR <b>110.30 MHz</b>	FINAL CRS <b>108°</b>	FAF: <b>6200'</b>	CAT I DA / (OCH): <b>3712' / (270')</b>	N/A
------------------------------	--------------------------	----------------------	--	-----

APCH Perdida: Subir para **6000'**. Manter proa **108** até **4000'**. Curva à ESQUERDA proa **078** para interceptar RDL **258** do VOR FSA para espera em EDVIV.

Missed APCH: Climb to **6000'**. Maintain heading **108** up to **4000'**. Turn LEFT heading **078** to intercept **258** RDL FSA VOR for holding on EDVIV.

RMK:1)(\*)VIS RVR ALS 600m para APCH utilizando Diretor de Voo, Piloto Automático ou Head-Up Display (HUD)  
(\*)VIS RVR ALS 600m para APCH using a Flight Director, Autopilot or Head-Up Display (HUD).



TO THR 11L (NM)	13.3	8.3	0.6	0.0
TO IBR (DME)	15.2	10.2	2.5	1.9

NIL	NIL	RW11L	KT	090	110	130	150	170	190
NIL	NIL	ALT	FPM	500	600	700	800	900	1000
NIL	NIL	(HGT)	FAF-MAPT	NA					

STRAIGHT-IN	CAT	A	B	C	D	E
CAT I	DA / (OCH)	3712' / (270')				
	ALS/NO ALS/ RVR ALS (m)	800 / 1300 / 700 (*)				
CIRCLING	MDA / (OCH)	NA				
	VIS (m)	NA				

CHANGES: ADEL LAYOUT, MISSED APCH, PROC. RMK