

STANDARD DEPARTURE CHART  
INSTRUMENT (SID)

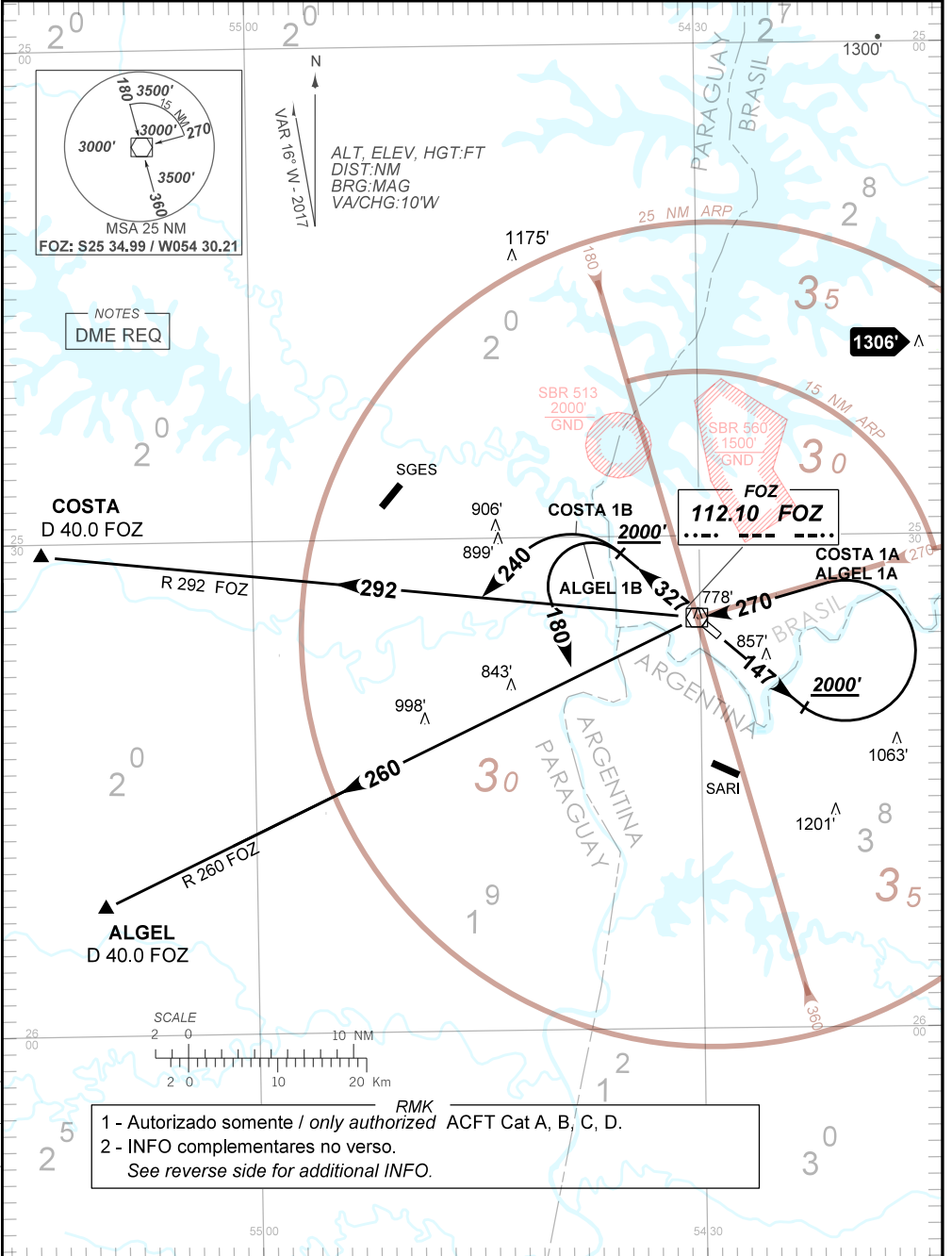
FOZ DO IGUAÇU / Cataratas, INTL (SBFI)

RWY 14 / 32

AD ELEV: 787'

ALGEL 1A, 1B - COSTA 1A, 1B

TA 4000'	TWR FOZ 118.80	APP FOZ 119.15 120.30 121.50	ACC CURITIBA 124.90 133.80 121.50
----------	-------------------	---------------------------------	--------------------------------------



CHANGES: DEC. IDENT. PROC. RMK.

RMK

3 - Obstáculos próximos não considerados para o cálculo do (PDG):

*Close-in obstacles not considered for procedure gradient (PDG):*

Antena: a partir del from THR 14, AZM 326, DIST 893 m, ELEV 778'.

4 - MNM IFR BLW MNM regulares / regular para / for DEP:

Teto / ceiling: NO REQ / RVR 500m / VIS 600m.

Observar compulsoriamente seção INS da AIP-map.

*INS section of AIP-MAP shall be observed.*