

STANDARD DEPARTURE CHART
INSTRUMENT (SID)

PORTO ALEGRE / Canoas, MIL (SBCO)

RWY 13

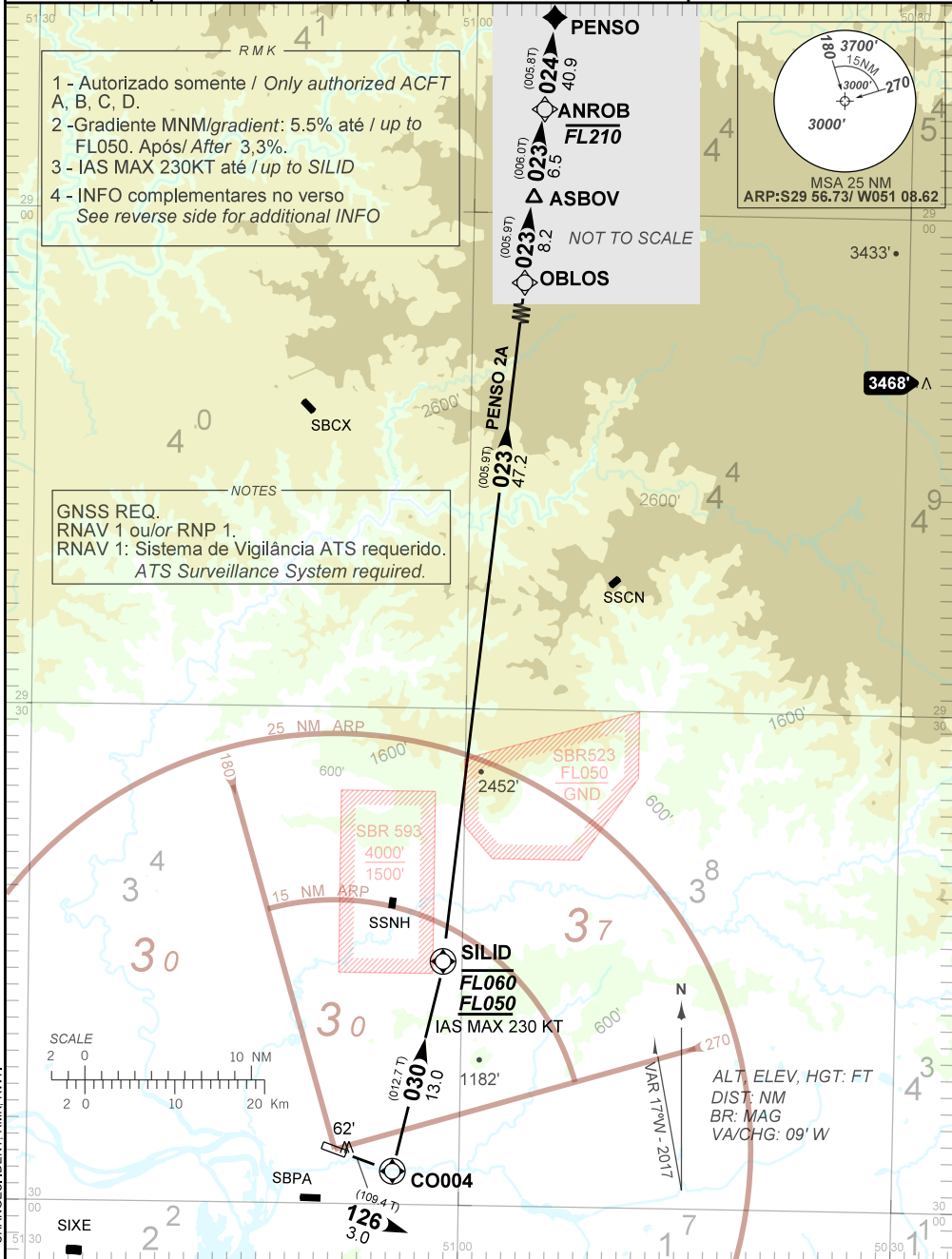
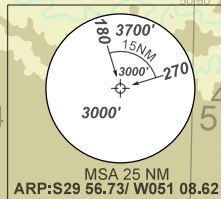
RNAV PENSO 2A

AD ELEV: 26'

TA 4000'	TWR CANOAS 118.50 122.80 (MIL) 121.50	APP PALEGRE 119.00 120.10 120.55 128.90 121.50	ACC CURITIBA 126.10 127.50 121.50
----------	--	--	--------------------------------------

1 - Autorizado somente / Only authorized ACFT A, B, C, D.
2 - Gradiente MNM/gradient: 5,5% até / up to FL050. Após/ After 3,3%.
3 - IAS MAX 230KT até / up to SILID
4 - INFO complementares no verso See reverse side for additional INFO

GNSS REQ.
RNAV 1 ou/ or RNP 1.
RNAV 1: Sistema de Vigilância ATS requerido.
ATS Surveillance System required.



CHANGES: IDENT, RMK, RWY.

R M K

5 - Gradiente superior a 3.3% devido aos espaços aéreos condicionados SBR 523 e SBR 593.
Climb gradient greater than 3.3% due to SBR 523 and SBR 593 conditioned airspaces.

6 - Obstáculos próximos não considerados para o cálculo do gradiente MNM de subida:
Close-in obstacles not taken into account for climb gradient calculation:

Árvores/trees: Dist 199 m THR 31 - BTN AZM 088 e land AZM 061 - ELEV 62 ft