

**INSTRUMENT APPROACH
CHART (IAC)**

ORIXIMINÁ / Trombetas (SBTB)

AD ELEV: 172'

RNAV(GNSS) RWY 27

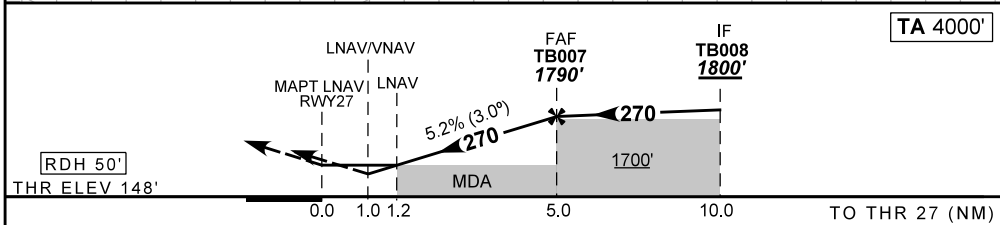
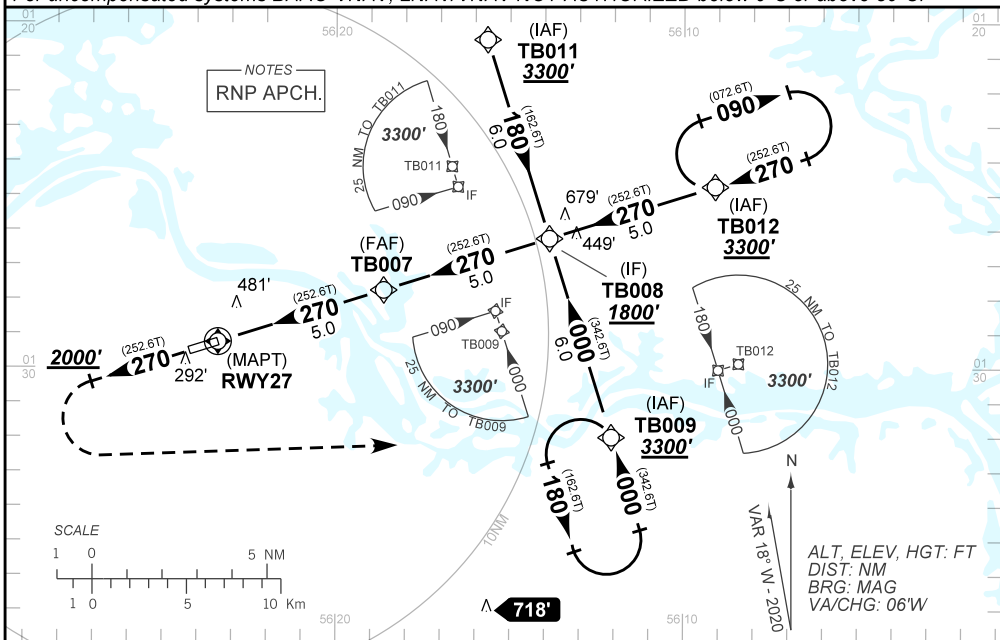
ATIS NIL	APP NIL		AFIS TROMBETAS 131.60	GNDC NIL
N/A	FINAL CRS 270°	FAF 1790'	LNAV/VNAV DA / (OCH): 537' / (389')	LNAV MDA / (OCH): 580' / (440')

APCH Perdida: Subir para **3300'**. Manter rumo **270** até passar **2000'**. Então, curvar à ESQUERDA direto para TB009 para espera.

Missed APCH: Climb to **3300'**. Maintain course **270** until passing **2000'**. Then, turn LEFT direct to TB009 for holding.

RMK: Para sistemas não compensados BARO-VNAV, LNAV/VNAV NÃO AUTORIZADO abaixo de 0°C ou acima de 50°C.

For uncompensated systems BARO-VNAV, LNAV/VNAV NOT AUTHORIZED below 0°C or above 50°C.



RWY27	1.2	2.0	3.0	4.0	TB007		KT	090	110	130	150	170	190
ALT	580	835	1153	1472	1790		FPM	500	600	700	800		NA
(HGT)	440	687	1005	1324	1642		FAF-MAPT	NA					

STRAIGHT-IN	CAT	A	B	C	D	E
	DA / OCH	537' / (389')				
LNAV/VNAV	ALS/NO ALS/ RVR ALS (m)	NIL / 1600 / NIL		NIL / 1800 / NIL		NA
	MDA / OCH	580' / (440')				
LNAV	ALS/NO ALS/ RVR ALS (m)	NIL / 1600 / NIL		NIL / 2000 / NIL		
	MDA / OCH	NA				
CIRCLING	MDA / OCH	NA				
	VIS (m)	NA				

CHANGES: NEW CHART