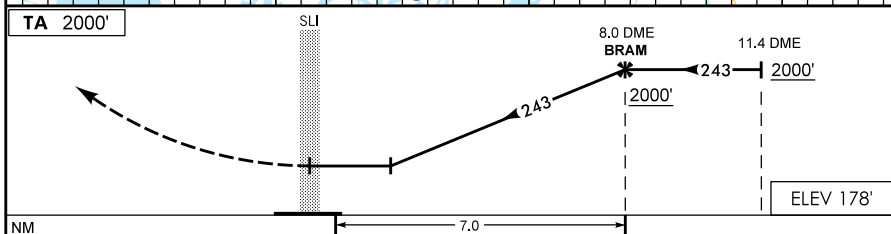
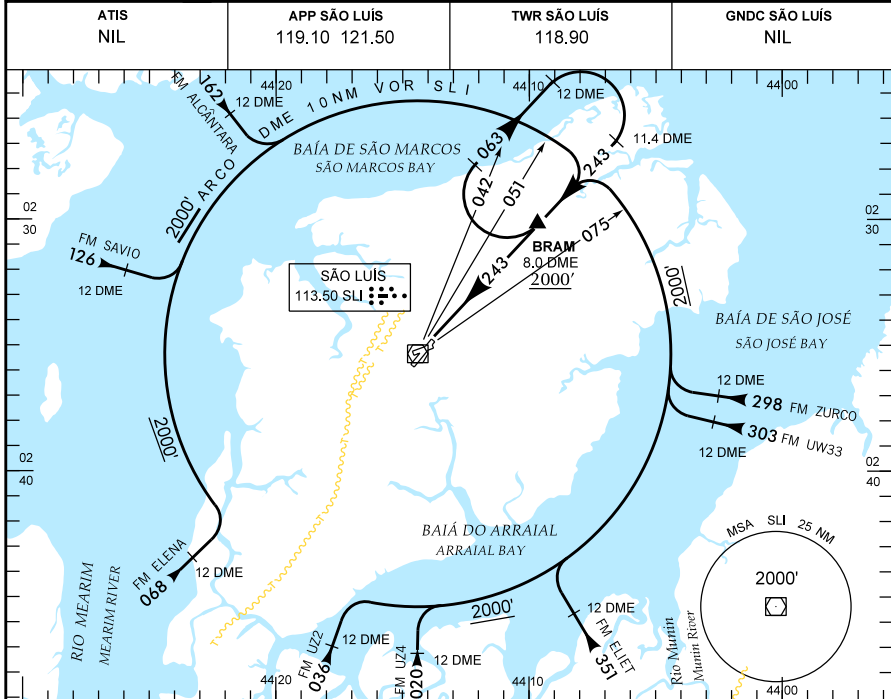


SÃO LUÍS / MARECHAL CUNHA MACHADO, INTL
 MA-BRASIL
VOR/DME RWY 24

IAC - SBSL WGS84



TA 2000' SLI
 8.0 DME BRAM
 11.4 DME
 243
 2000'
 ELEV 178'
 NM 7.0

APROXIMAÇÃO PERDIDA
 MISSED APPROACH
 SUBIR PARA 2000' NA RDL 243. APÓS, CURVAR À DIREITA E EXECUTAR O ARCO 10 NM PARA ESPERA NO REP BRAM.
 CLIMB TO 2000 FT ON RDL 243. THEN, TURN RIGHT AND EXECUTE 10 NM ARC FOR HOLDING AT BRAM REP.

RMK: NIL

C	POUSO DIRETO RWY 24	STRAIGHT-IN TO RWY 24	IFR OPS	DIURNA / NOTURNA DAY / NIGHT	PARA CIRCULAR TO CIRCLING (RMK)			
					CAT	MDA	TETO CEILING	VIS
A					A	600'	500'	1600 M
T					B	680'		
A					C			3200 M
B					D	900'	800'	3600 M
C					E			4000 M
D								
E								

RAZAO DE DESCIDA NA APROXIMAÇÃO FINAL RATE OF DESCENT ON FINAL APPROACH						
KT	090	110	130	150	170	190
FPM	450	550	650	750	850	1000