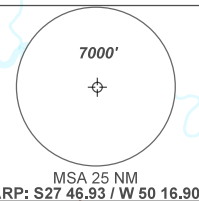
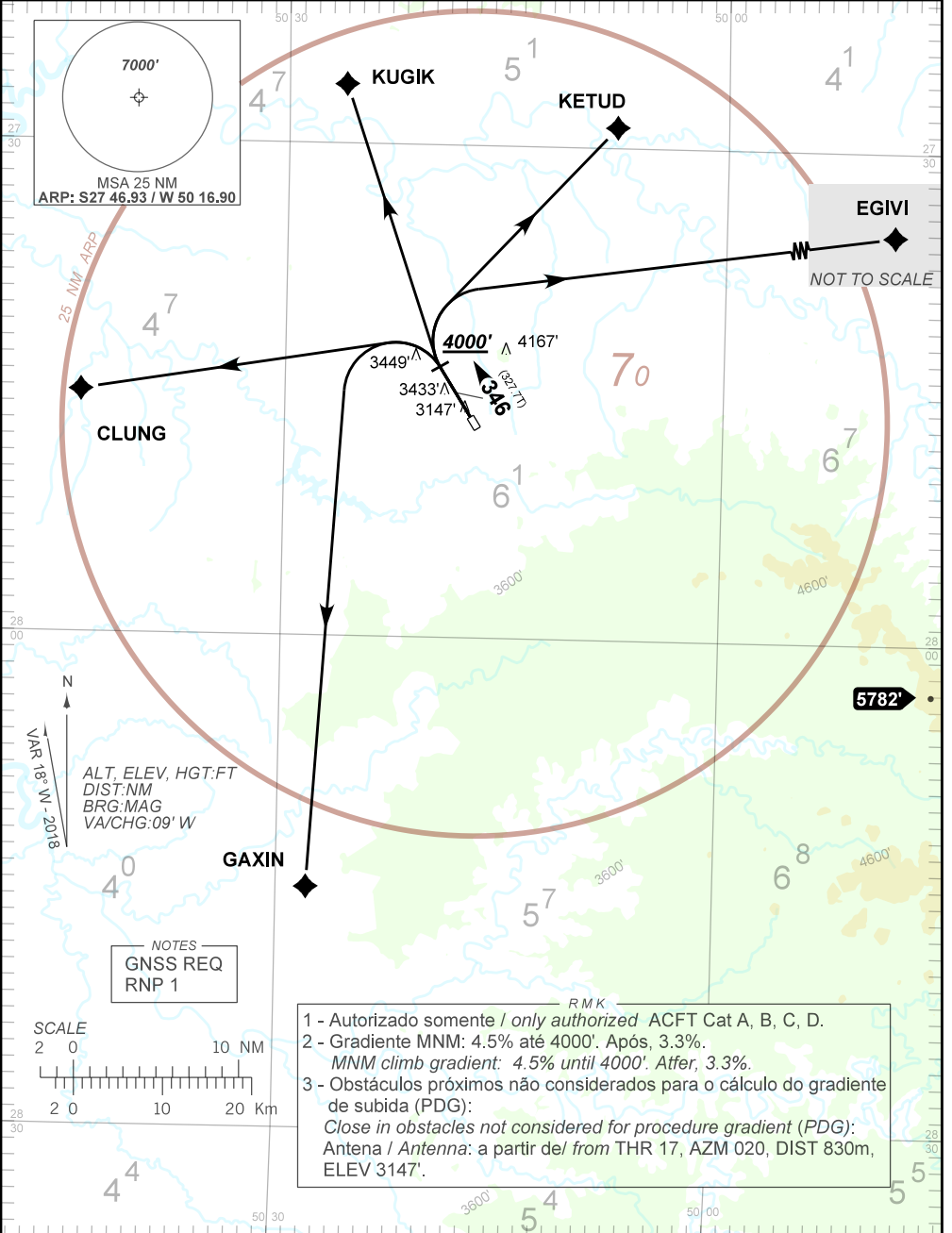


AD ELEV: 3064'

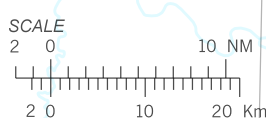
TA 7000'	AFIS LAGES 132.15	APP NIL	ACC CURITIBA 126.10 127.50 128.45 135.85 121.50
----------	----------------------	------------	--



VAR: 18° W - 2018

ALT, ELEV, HGT: FT
DIST: NM
BRG: MAG
VA/CHG: 09' W

NOTES
GNSS REQ
RNP 1



- RMK
- 1 - Autorizado somente / only authorized ACFT Cat A, B, C, D.
 - 2 - Gradiente MNM: 4.5% até 4000'. Após, 3.3%.
MNM climb gradient: 4.5% until 4000'. After, 3.3%.
 - 3 - Obstáculos próximos não considerados para o cálculo do gradiente de subida (PDG):
Close in obstacles not considered for procedure gradient (PDG):
Antena / Antenna: a partir de/ from THR 17, AZM 020, DIST 830m, ELEV 3147'.

CHANGES: NEW CHART.