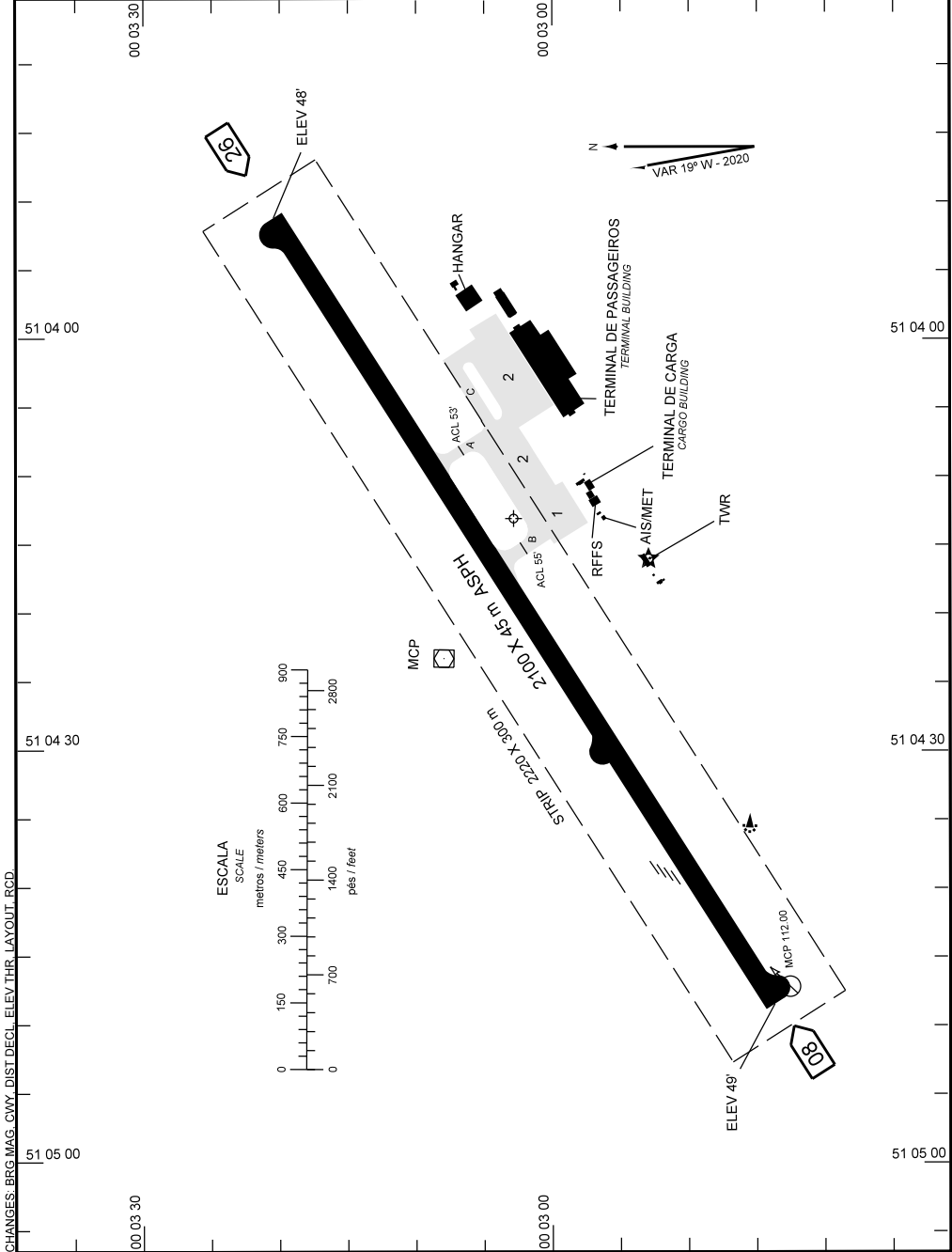


AD ELEV: 56'

ARP N00 03 03 W051 04 13

ATIS / D-ATIS NIL	CLRD NIL	GNDC NIL	TWR 118.00	APRON NIL
----------------------	-------------	-------------	---------------	--------------



CHANGES: BRG MAG, CWY, DIST, DECL, ELEV, THR, LAYOUT, RCD

**ADC - SBMQ: INFORMAÇÕES COMPLEMENTARES / COMPLEMENTARY INFORMATION**

**CARACTERÍSTICAS FÍSICAS / PHYSICAL CHARACTERISTICS**

PISTA RUNWAY				DIMENSÕES(m) DIMENSIONS(m)				PCN	TIPO DE SUPERFÍCIE SURFACE KIND		
RWY	BRG MAG	Tipo Type	RCD	RWY	SWY	CWY	STRIP	RWY	RWY	SWY	
a	b	c	d	e	f	g	h	i	j	k	
08	077	NPA	4C	2100x45			2200 x 300	48/F/C/X/T	ASPH		
26	257	NPA	4C								

**DISTÂNCIAS DECLARADAS, AUXÍLIOS VISUAIS E COORDENADAS DAS CABECEIRAS  
DECLARED DISTANCES, VISUAL AIDS AND THRESHOLD COORDINATES**

RWY	TORA(m)	TODA(m)	ASDA(m)	LDA(m)	AUXÍLIOS / AIDS	ALTURA GEOIDAL(m) GEOID HEIGHT(m)	COORDENADAS COORDINATES
08	2100	2100	2100	2100	PAPI(3,02°)	-23,62	N00 02 44 W051 04 48
26	2100	2100	2100	2100		-23,63	N00 03 21 W051 03 51

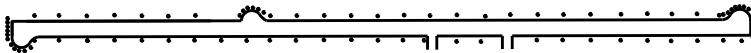
**SERVIÇO DE SALVAMENTO E CONTRAINCÊNDIO / RESCUE AND FIRE FIGHTING SERVICE: RFFS REQ - 06**

**RWY 08 / 26**

**Sinalização horizontal / Marking Aids**



**Auxílios luminosos / Lighting Aids**



**RMK:** 1) PAPI - RWY 08: MEHT 59'.

CHANGES: BRG MAG, CWY, DIST DECL, ELEV, THR, LAYOUT, RCD.