

**INSTRUMENT APPROACH
CHART (IAC)**

ITUMBIARA / Hidrelétrica de Itumbiara (SBIT)

AD ELEV: 1631'

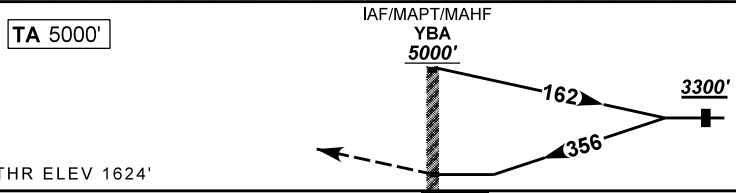
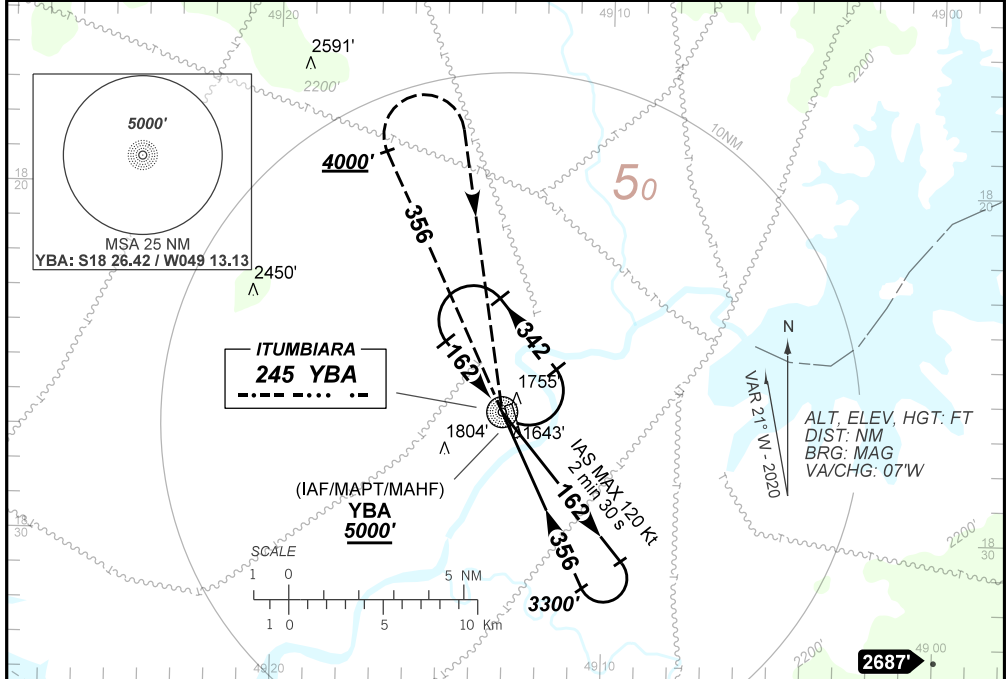
NDB Z RWY 36

ATIS NIL	APP NIL	AFIS ITUMBIARA 130.30	GNDC NIL
NDB YBA 245 kHz	FINAL CRS 356°	N/A	NDB MDA / (OCH): 2550' / (920')

APCH Perdida: Subir para **5000'**. Manter QDR **356** até **4000'**. Após, curvar à DIREITA direto NDB YBA para espera.

Missed APCH: Climb to **5000'**. Maintain QDR **356** until **4000'**. After, turn RIGHT direct YBA NDB for holding.

RMK: NIL.



RWY 18/36	NA	KT	090	110	130	150	170	190	
ALT	NA	FPM	650						NA
(HGT)	NA	FAF-MAPT	NA						

STRAIGHT-IN	CAT	A	B	C	D	E
NDB	MDA / (OCH)	2550' / (920')		NA	NA	NA
	ALS/NO ALS/ RVR ALS (m)	NIL / 2000 / NIL				
CIRCLING	MDA / (OCH)	NA				
	VIS (m)					

CHANGES: DEC. FREQ. IDENT. LAYOUT. MSA. PROC.