

INSTRUMENT APPROACH  
CHART (IAC)

ARACAJU / Santa Maria, INTL (SBAR)

VOR W RWY 12

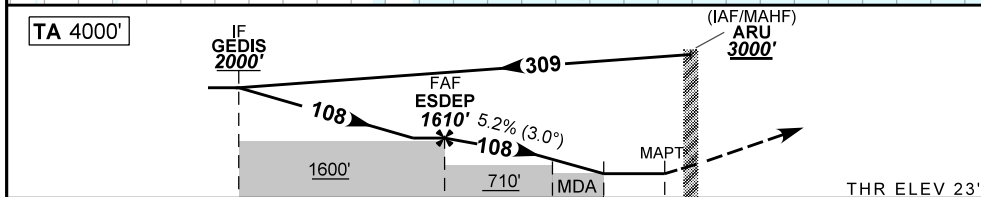
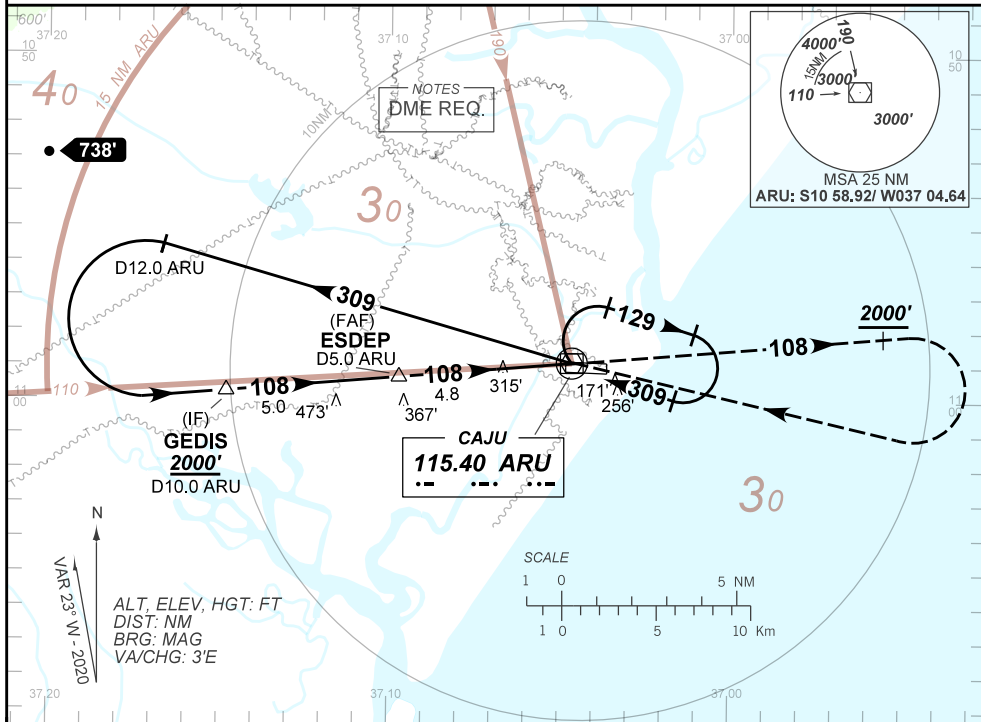
AD ELEV: 23'

ATIS NIL	APP ARACAJU 120.30 129.25 121.50	TWR ARACAJU 118.80	GNDC NIL
VOR ARU 115.40 MHz	FINAL CRS 108°	FAF: 1610'	VOR MDA / (OCH): 570' (550')

APCH Perdida: 1) Subir para 3000'. Manter RDL 108 do VOR ARU até cruzar 2000'. Após, curvar à DIREITA direto ARU para espera.

Missed APCH: 1) Climb to 3000'. Maintain 108 RDL ARU VOR until passing 2000'. After, turn RIGHT direct to ARU for holding.

RMK: NIL.



TO THR 12 (NM)	9.8	4.8	2.0	1.6	0.0	0.0	0.0	0.0	0.0				
TO ARU (DME)	10.0	5.0	2.5	2.0	1.8	1.6	1.4	1.2	1.0				
	ESDEP	4.0	3.0	2.0	1.6	RWY12	KT	090	110	130	150	170	190
	1610	1347	1028	710	570	ALT	FPM	500	600	700	800	900	NA
	1587	1324	1005	687	550	(HGT)	FAF-MAPT	NA					

STRAIGHT-IN	CAT	A	B	C	D	E
VOR	MDA / (OCH)	570' / (550')				NA
	ALS/NO ALS/RVR ALS (m)	NIL / 1600 / NIL				NIL / 2500 / NIL
CIRCLING	MDA / (OCH)	NA				
	VIS (m)					

CHANGES: LAYOUT, MIN OPR, PROC.