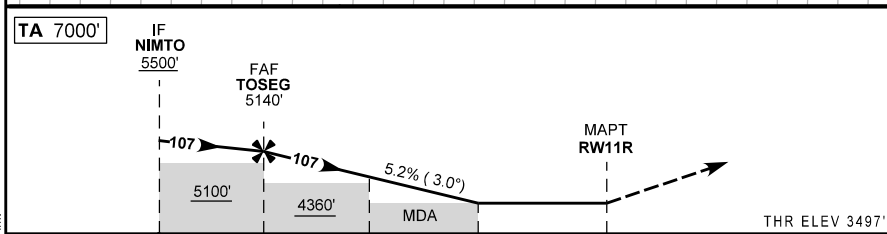
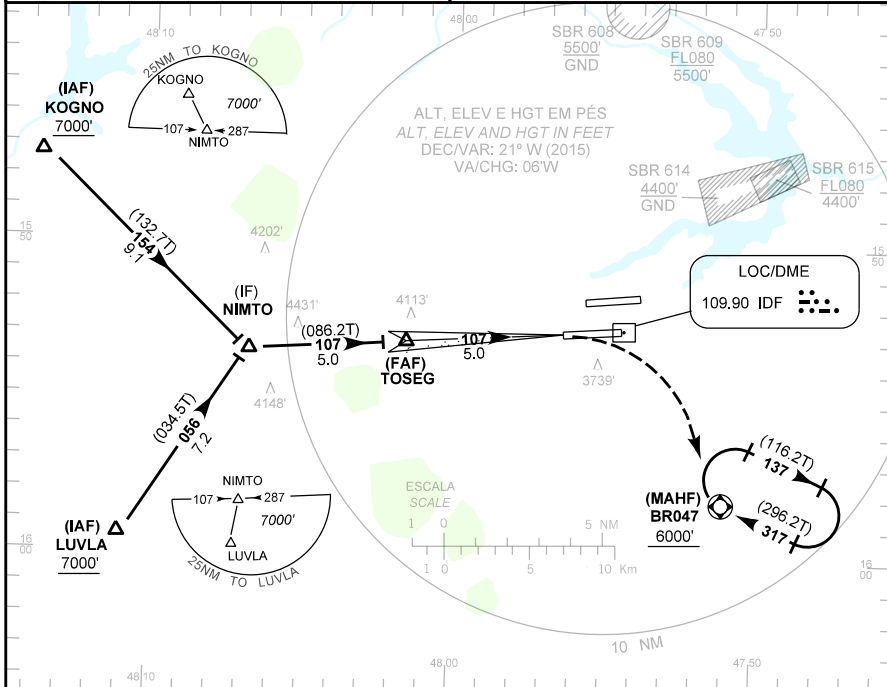


CARTA DE APROXIMAÇÃO  
POR INSTRUMENTOS (IAC)  
INSTRUMENT APPROACH CHART (IAC)

BRASÍLIA / Pres. Juscelino Kubitschek, INTL (SBBR)

LOC Z RWY 11R

|  |                |   |  |                         |
|--|----------------|---|--|-------------------------|
| AD ELEV: 3497'   | ATIS<br>127,80 | APP BRASÍLIA<br>119,20 119,50 119,70 120,00 129,60 121,50 | TWR BRASÍLIA<br>118,10 118,45 121,50   | GNDC BRASÍLIA<br>121,80 |
| RMK: 1) Observar compulsoriamente seção CAR da AIP-MAP.<br>1) CAR section of AIP-MAP shall be observed.<br>2) RNAV 1 ou/ou RNP 1 |                |   | Aproximação Perdida: Curvar à direita e subir para 6000', gradiente de 5%, para espera em BR047.<br>Missed Approach: Turn right and climb to 6000', 5% gradient, for holding at BR047. |                         |



|                            |                         |      |                  |      |        |                   |   |  |  |  |  |  |  |  |  |  |  |  |  |
|----------------------------|-------------------------|------|------------------|------|--------|-------------------|---|--|--|--|--|--|--|--|--|--|--|--|--|
| TO THR 11R (NM)            | 10.0                    | 5.0  | 2.5              | 1.0  | 0.0    |                   |   |  |  |  |  |  |  |  |  |  |  |  |  |
| TO IDF BR (DME)            | 11.9                    | 6.9  | 4.4              | 2.9  | 1.9    |                   |   |  |  |  |  |  |  |  |  |  |  |  |  |
| TOSEG                      | 4.0                     | 3.0  | 2.0              | 1.0  | RWY11R |                   |   |  |  |  |  |  |  |  |  |  |  |  |  |
| 5140                       | 4821                    | 4502 | 4184             | 3880 | ALT    |                   |   |  |  |  |  |  |  |  |  |  |  |  |  |
| 1642                       | 1324                    | 1005 | 687              | 383  | (HGT)  |                   |   |  |  |  |  |  |  |  |  |  |  |  |  |
| POSO DIRETO<br>STRAIGHT-IN | CAT                     |      | A                | B    | C      | D                 | E |  |  |  |  |  |  |  |  |  |  |  |  |
| LOC                        | MDA / OCH / TETO        |      | 3880 / 390 / 400 |      |        |                   |   |  |  |  |  |  |  |  |  |  |  |  |  |
|                            | ALS/NO ALS/ RVR ALS (m) |      | 800 / 1600 / NIL |      |        | 1100 / 1800 / NIL |   |  |  |  |  |  |  |  |  |  |  |  |  |
| CIRCULAR<br>TO CIRCLE      | MDA / OCH / TETO        |      | NA               |      |        |                   |   |  |  |  |  |  |  |  |  |  |  |  |  |
|                            | VIS (m)                 |      |                  |      |        |                   |   |  |  |  |  |  |  |  |  |  |  |  |  |

MODIFICAÇÕES / CHANGES: CARTA NOVA / NEW CHART.