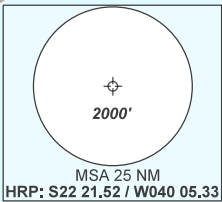


HELPN ELEV: 106'

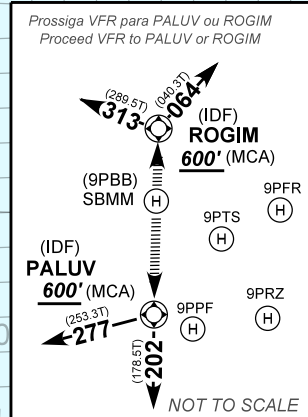
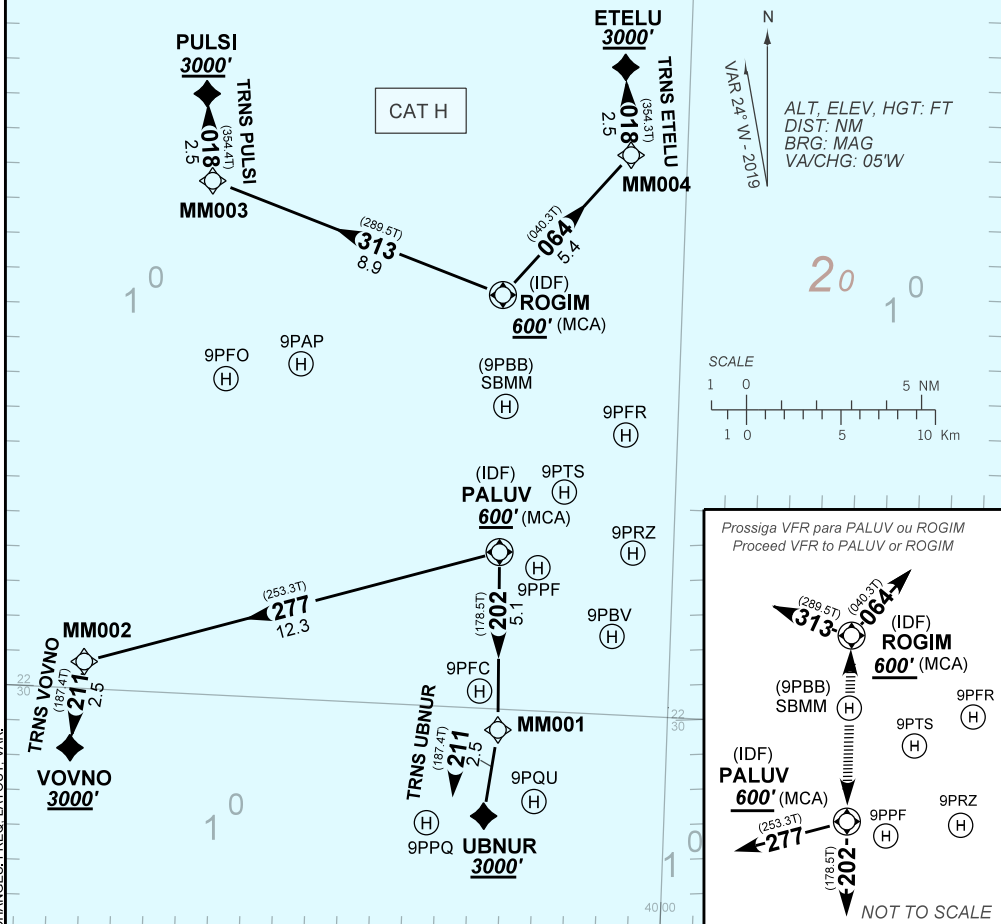
RNAV PALUV 1A - ROGIM 1A

TA 3000'	TWR NIL	APP MACAÉ 130.85 126.90 131.975 129.55 128.95 121.50	ACC NIL
----------	---------	---	---------

NOTES
GNSS REQ.
RNAV 1 ou/ou RNP 1.
RNAV 1: Vigilância ATS REQ.
ATS Surveillance REQ.



- 1 - Responsabilidade do piloto em comando a separação com obstáculos e terreno até PALUV ou ROGIM.
Responsibility of the pilot in command for separation with obstacles and terrain up to PALUV or ROGIM.
- 2 - Manter regras de voo visual (VFR) até PALUV ou ROGIM.
Maintain visual flight rules (VFR) up to PALUV or ROGIM.
- 3 - Procedimento poderá ser utilizado de helideques situados dentro de 10NM de PALUV ou ROGIM, desde que em coordenação com o órgão ATS.
Procedure may be used from helidecks located within 10NM of PALUV or ROGIM, provided that in coordination with the ATS unit.



CHANGES: FREQ. LAYOUT. VAR.