

CARTA DE APROXIMAÇÃO  
POR INSTRUMENTOS (IAC)

SÃO JOSÉ DOS CAMPOS / Prof. Urbano Ernesto Stumpf, INTL (SBSJ)

INSTRUMENT APPROACH CHART (IAC)

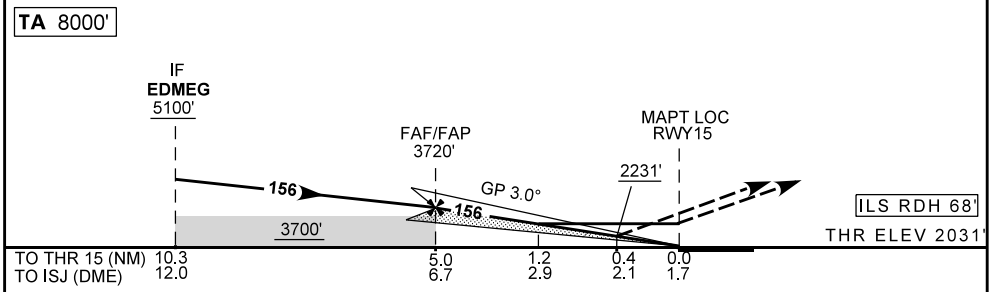
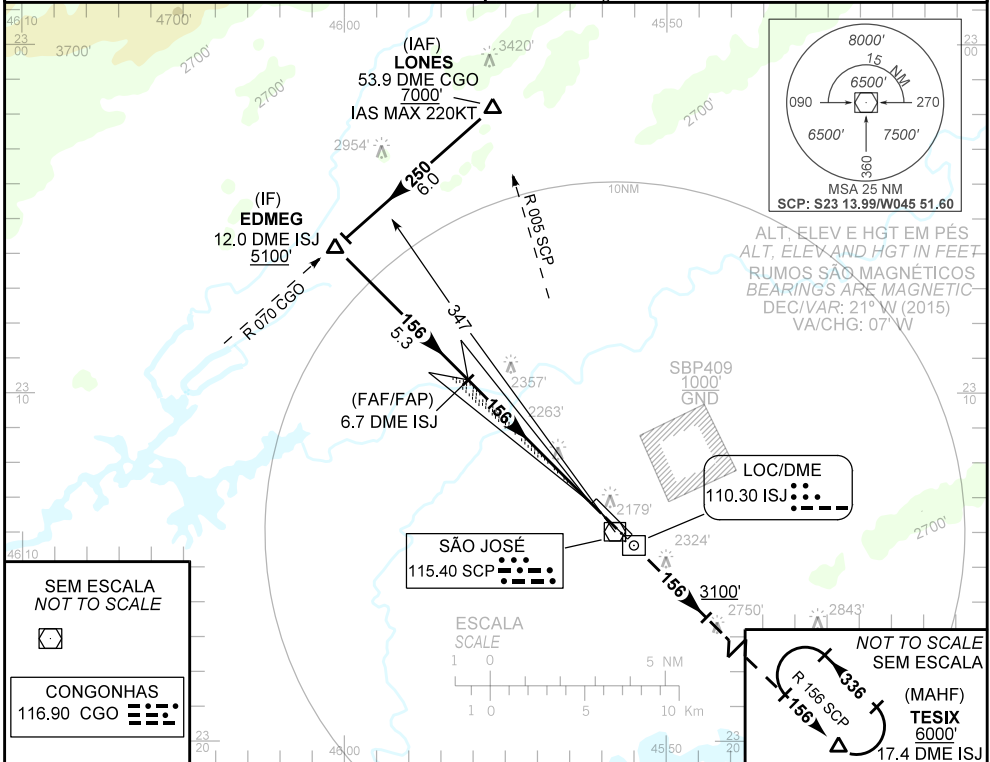
ILS V ou/ou LOC V RWY 15

AD ELEV: 2123'	D-ATIS 127.925	APP SÃO PAULO 124.15 134.15 134.90 129.00 120.45 129.05 123.90 125.60 124.70 121.50	TWR SÃO JOSÉ 118.50 121.50	GNDC SÃO JOSÉ 121.95
----------------	-------------------	---	-------------------------------	-------------------------

RMK: 1) Pousou RWY 33: circular somente pelo setor SW do Aeródromo.

RMK: 1) Arrival RWY 33: circle SW sector only.

Aproximação perdida: Subir para 6000' na proa 156, com gradiente mínimo de 4%. Após 3100', interceptar a RDL156 SCP. Executar espera em TESIX a 6000'.  
Missed Approach: Climb to 6000' on heading 156, MNM gradient 4%. After passing 3100', intercept 156 SCP RDL. Execute holding at TESIX at 6000'.



FAF/FAP	4.0	3.0	2.0	1.0	0.4	RWY15	KT	090	110	130	150	170	190
	3720	3390	3060	2740	2420	2231	FPM	500	600	700	800	900	1000
	1689	1359	1029	709	389	200	FAF-MAPT 5NM	3:20	2:43	2:18	2:00	1:45	1:35

POUSO DIRETO STRAIGHT-IN	CAT	A	B	C	D	E
	DA / OCH	2231 / 200				
CAT I	ALS/NO ALS/RVR ALS (m)	1200 / 1200 / 1100				
	MDA / OCH	2510 / 480				
LOC	ALS/NO ALS/RVR ALS (m)	1200 / 1600 / NIL		1800 / 2200 / NIL		
	MDA / OCH	2640 / 520		2970 / 850		3310 / 1190
CIRCULAR TO CIRCLE	MDA / OCH	2600		4000		4800
	VIS (m)	1600		4000		4800

CHANGES: AD ELEV, FREQ, MNM, MNM OFF.