

STANDARD DEPARTURE CHART
INSTRUMENT (SID)

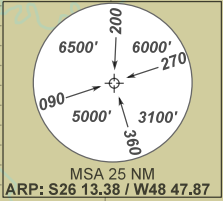
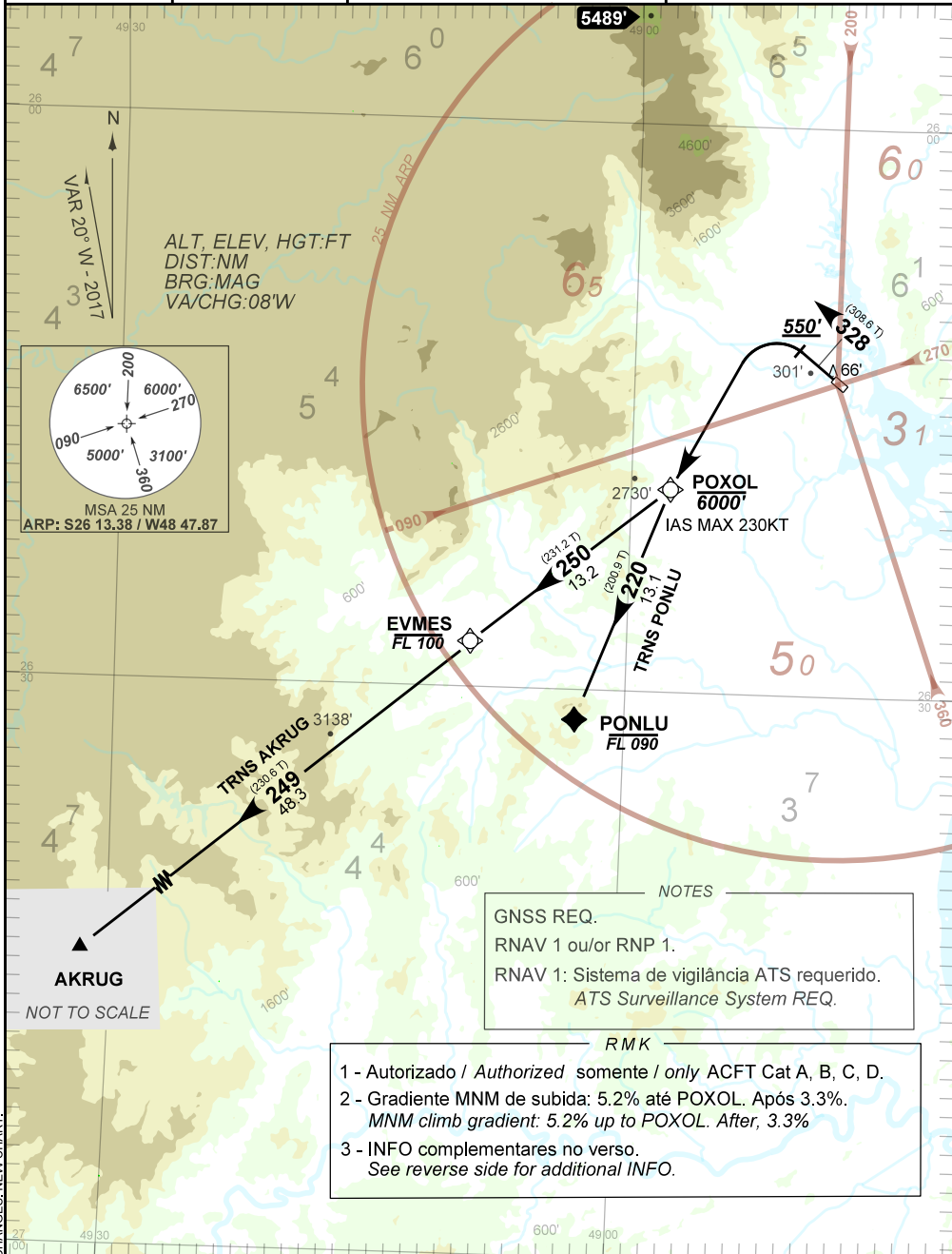
JOINVILLE / Lauro Carneiro de Loyola (SBJV)

RWY 33

AD ELEV: 15'

RNAV POXOL 1B

TA 7000'	TWR JOINVILLE 118.00	APP CURITIBA 119.95 119.70 120.65 120.95 129.55 133.15 121.50	ACC CURITIBA 126.10 127.50 128.45 135.85 121.50
-----------------	--------------------------------	--	--



NOTES

GNSS REQ.
RNAV 1 ou/ou RNP 1.
RNAV 1: Sistema de vigilância ATS requerido.
ATS Surveillance System REQ.

RMK

1 - Autorizado / Authorized somente / only ACFT Cat A, B, C, D.
2 - Gradiente MNM de subida: 5.2% até POXOL. Após 3.3%.
MNM climb gradient: 5.2% up to POXOL. After, 3.3%
3 - INFO complementares no verso.
See reverse side for additional INFO.

CHANGES: NEW CHART.

RMK

4 - Obstáculos próximos não considerados para o cálculo do (PDG):

Close-in obstacles not considered for procedure gradient (PDG):

Árvore / Tree: a partir de / from THR15, AZM 009, DIST 312m, ELEV 66'.