

**INSTRUMENT APPROACH CHART (IAC)**

**SÃO PAULO / Guarulhos - Gov. André Franco Montoro, INTL (SBGR)**

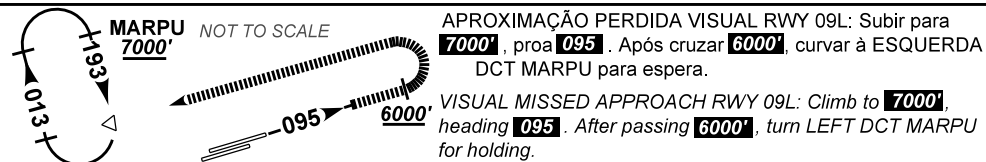
**AD ELEV: 2461'**

**ILS J ou/ou LOC J RWY 09R**

D-ATIS <b>127.75</b>	APP SÃO PAULO <b>129.75 119.15 120.45 120.85 121.50</b>	TWR GUARULHOS <b>118.40 132.75 135.20 121.50</b>	GNDC GUARULHOS <b>121.70 126.90</b>
LOC IGR <b>111.50 MHz</b>	FINAL CRS <b>095°</b>	FAF: <b>4060'</b>	CAT I <b>DA / (OCH): 2650' / (200')</b>
LOC ONLY <b>MDA / (OCH): 2980' / (530')</b>			

APCH Perdida: 1) Subir para **6000'**, gradiente MNM 5%. Manter rumo **095** até cruzar **3300'**. Após, curvar à DIREITA, RDL **181** BCO para espera em ISIMU.  
 Missed APCH: 1) Climb to **6000'**, MNM gradient 5%. Mantain course **095** until passing **3300'**. Then, turn RIGHT, **181** BCO RDL for holding at ISIMU.

RMK: 1) (\*) VIS RVR ALS 550m para aproximação utilizando Diretor de Voo, Piloto Automático ou Head-Up Display (HUD).  
 (\*) VIS RVR ALS 550m for approach using a Flight Director, Autopilot or Head-Up Display (HUD).



TA 8000'	IF MAGVU 5600'	FAF EVNEB 4060'	MAPT LOC MM	ILS RDH 56'	THR ELEV 2450'
	4200'	3900'	3200'		
			5.0% (2.9%)		

TO THR 09R (NM)	10.1	7.0	5.0	2.8	1.5	0.5	0.0
TO BCO (DME)	16.7	12.9	10.9	8.7	7.4	6.4	5.9

EVNEB	4.0	3.0	2.0	1.5	RW09R	KT	90	110	130	150	170	190
4060	3760	3444	3129	2980	(HGT)	FPM	500	600	700	800	900	1000
1610	1310	994	679	530		FAF-MAPT	NA					

STRAIGHT-IN	CAT	A	B	C	D	E
CAT I	DA / (OCH)	2650' / (200')				
	ALS/NO ALS/ RVR ALS(m)	800 / 1200 / 700 (*)				
LOC	MDA / (OCH)	2980' / (530')				
	ALS/NO ALS/ RVR ALS(m)	800 / 1600 / NIL		1700 / 2400 / NIL		
CIRCLING	MDA / (OCH)	NA				
	VIS (m)					

CHANGES: IDENT. PROC.