

INSTRUMENT APPROACH
CHART (IAC)

PONTA PORÃ / Ponta Porã, INTL (SBPP)

AD ELEV: 2156'

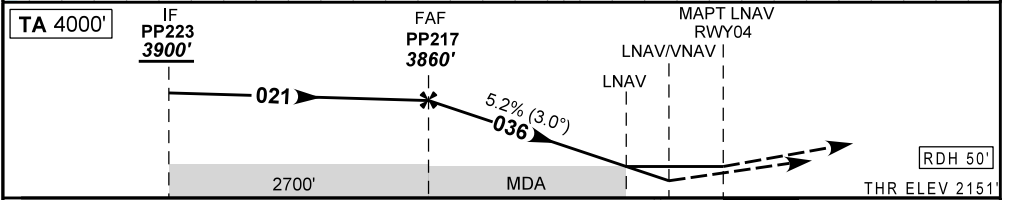
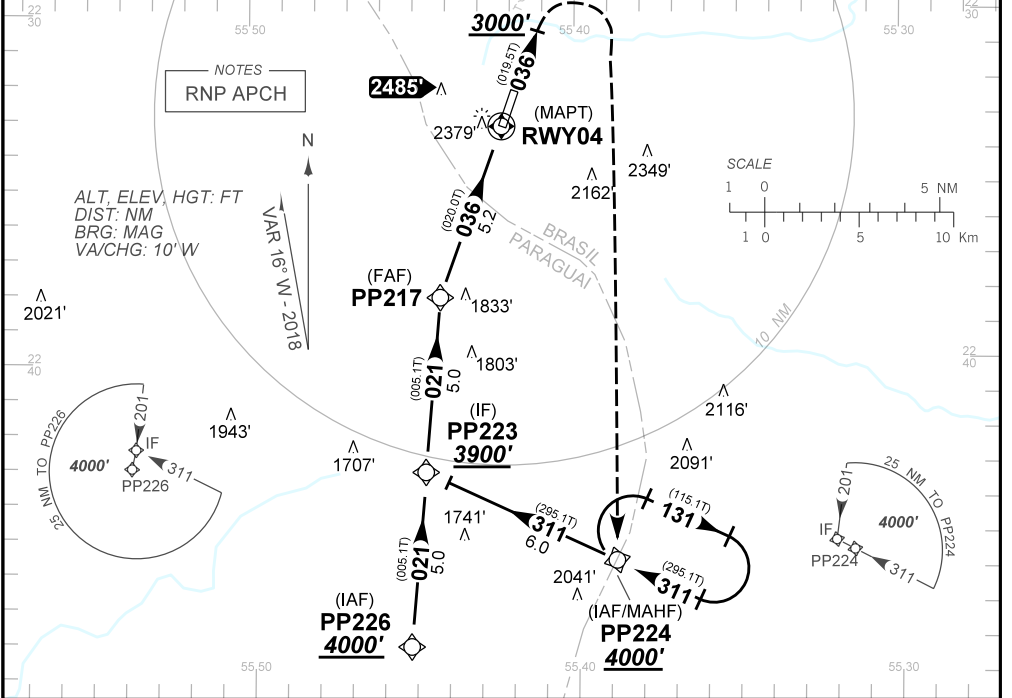
RNAV (GNSS) RWY 04

ATIS NIL	APP NIL	AFIS PONTA PORÃ 125.90	GNDC NIL
N/A	FINAL CRS 036°	FAF 3860'	LNAV MDA / (OCH): 2630' (480')
		LNAV/VNAV DA / (OCH): 2538' (390')	

APCH Perdida: Subir para **4000'**. Após **3000'**, curvar à DIREITA direto PP224 para espera.
Missed APCH: Climb to **4000'**. After **3000'**, turn RIGHT direct to PP224 for holding.

RMK: 1) Para sistemas não compensados BARO-VNAV, LNAV/VNAV NÃO AUTORIZADO abaixo de -10°C ou acima de 53°C.

1) For uncompensated systems BARO-VNAV, LNAV/VNAV NOT AUTHORIZED below -10°C or above 53°C.



TO THR 04 (NM)	10.2	5.2	1.3	1.1	THR ELEV 2151'
PP217	4.0	3.0	2.0	1.4	RWY04
	3860	3162	2843	2630	ALT
	1709	1329	1011	692	479 (HGT)
					KT
					090
					110
					130
					150
					170
					190
					NA
					FPM
					500
					600
					700
					800
					900
					NA
					FAF-MAPT
					NA

STRAIGHT-IN	CAT	A	B	C	D	E
LNAV/VNAV	DA / (OCH)	2538' / (390)				NA
	ALS/NO ALS/ RVR ALS (m)	NIL / 1800 / NIL				
LNAV	MDA / (OCH)	2630' / (480)				
	ALS/NO ALS/ RVR ALS (m)	NIL / 1600 / NIL		NIL / 2200 / NIL		
CIRCLING	MDA / (OCH)	NA				
	VIS (m)	NA				

CHANGES: PROC. THR ELEV.