

STANDARD DEPARTURE CHART
INSTRUMENT (SID)

VITÓRIA / Eurico de Aguiar Salles (SBVT)

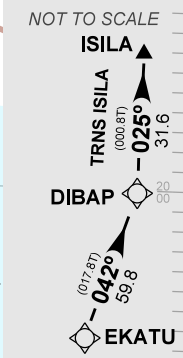
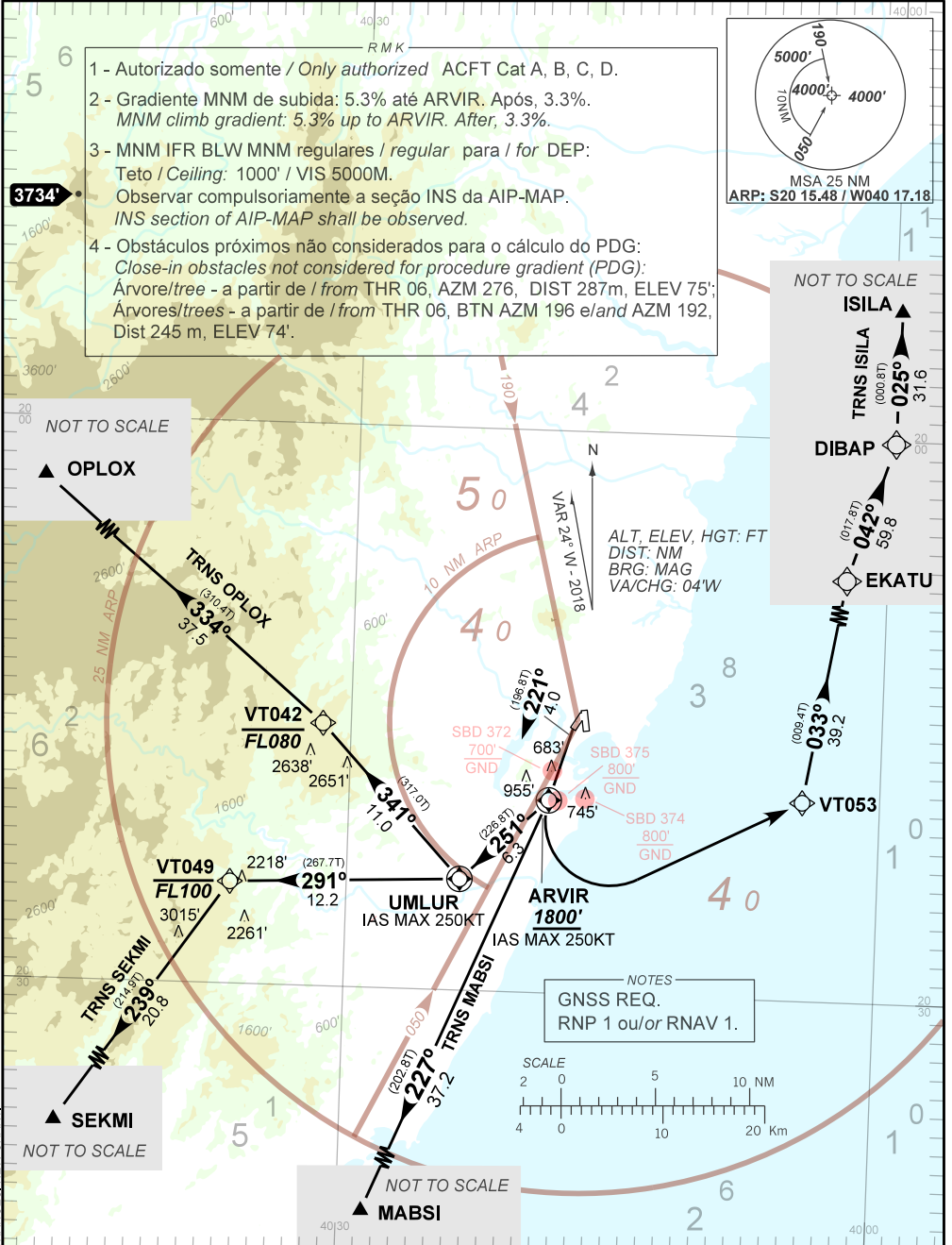
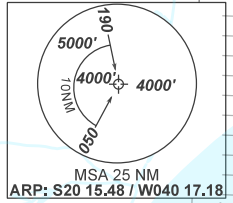
RWY 24

RNAV ARVIR 1D

AD ELEV: 34'

| | | | | |
|----------|------------------------------|------------------------------|---|--------------------------------------|
| TA 5000' | TWR VITÓRIA 118.10 121.50 | APP VITÓRIA 119.85 121.50 | ACC RECIFE 126.55 134.75 135.65 124.25 121.50 | ACC CURITIBA 133.40 133.60 121.50 |
|----------|------------------------------|------------------------------|---|--------------------------------------|

- 1 - Autorizado somente / Only authorized ACFT Cat A, B, C, D.
- 2 - Gradiente MNM de subida: 5.3% até ARVIR. Após, 3.3%.
MNM climb gradient: 5.3% up to ARVIR. After, 3.3%.
- 3 - MNM IFR BLW MNM regulares / regular para / for DEP:
Teto / Ceiling: 1000' / VIS 5000M.
- 4 - Observar compulsoriamente a seção INS da AIP-MAP.
INS section of AIP-MAP shall be observed.
- 4 - Obstáculos próximos não considerados para o cálculo do PDG:
Close-in obstacles not considered for procedure gradient (PDG):
Árvore/tree - a partir de / from THR 06, AZM 276, DIST 287m, ELEV 75';
Árvores/trees - a partir de / from THR 06, BTN AZM 196 e land AZM 192,
Dist 245 m, ELEV 74'.



ALT, ELEV, HGT: FT
DIST: NM
BRG: MAG
VA/CHG: 04'W

NOTES
GNSS REQ.
RNP 1 ou/ou RNAV 1.

CHANGES: NEW CHART.