

INSTRUMENT APPROACH
CHART (IAC)

SÃO GONÇALO DO AMARANTE / Gov. Aluizio Alves, INTL (SBSG)

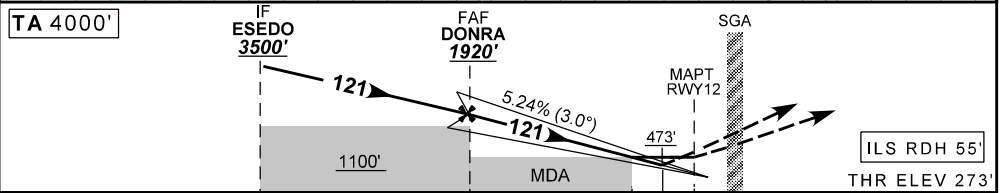
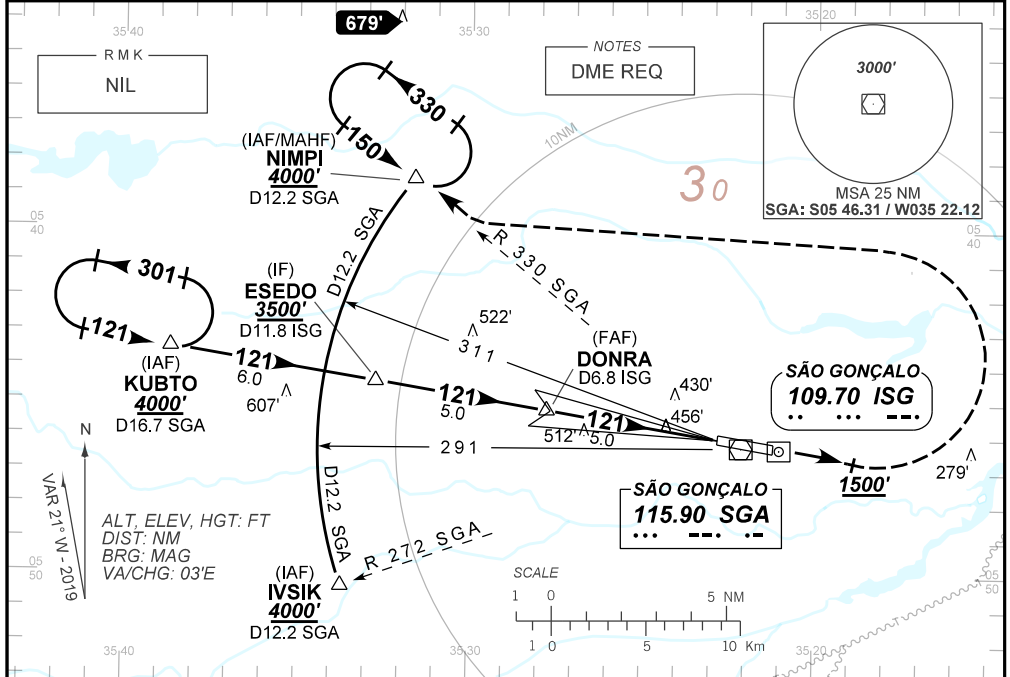
AD ELEV: 273'

ILS Z ou/or LOC Z RWY 12

D-ATIS 127.60	APP NATAL 119.30 119.65 121.50	TWR SÃO GONÇALO 118.20 118.85	GNDC SÃO GONÇALO 121.70
LOC ISG 109.70 MHz	FINAL CRS 121°	FAF: 1920'	CAT I DA / (OCH): 473' / (200')
		LOC ONLY MDA / (OCH): 760' / (490')	

APCH Perdida: 1) Subir para **4000'**. Manter rumo **121°** até cruzar **1500'**. Após, curvar à ESQUERDA, RDL **330** SGA até NIMPI para espera. 2) IAS MÁX 230Kt. 3) Proibido rebloqueio VOR SGA.

Missed APCH: 1) Climb to **4000'**. Maintain course **121°** until passing **1500'**. Then, turn LEFT, **330** SGA RDL for holding at NIMPI. 2) MAX IAS 230Kt. 3) Overflight of SGA VOR is forbidden.



TO THR 12 (NM)	10.0	5.0	1.4	0.5	0.0
TO ISG (DME)	11.8	6.8	2.1	2.3	1.8

	DONRA	4.0	3.0	2.0	1.4	RWY12		KT	90	110	130	150	170	190
		1920	1620	1290	970	760	ALT	FPM	500	600	700	800	900	1000
		1648	1347	1017	697	487	(HGT)	FAF-MAPT	3:21	2:44	2:19	2:01	1:46	1:35

STRAIGHT-IN	CAT	A	B	C	D	E
CAT I	DA / (OCH)	473' / (200')				NA
	ALS/NO ALS/ RVR ALS (m)	800 / 1200 / 700				
LOC ONLY	MDA / (OCH)	760' / (490')				
	ALS/NO ALS/ RVR ALS (m)	NIL / 1600 / NIL		NIL / 2300 / NIL		
CIRCLING	MDA / (OCH)	NA				
	VIS (m)					

CHANGES: LAYOUT, DEC. MA, RDL, ADEL, PROC. MDA.