

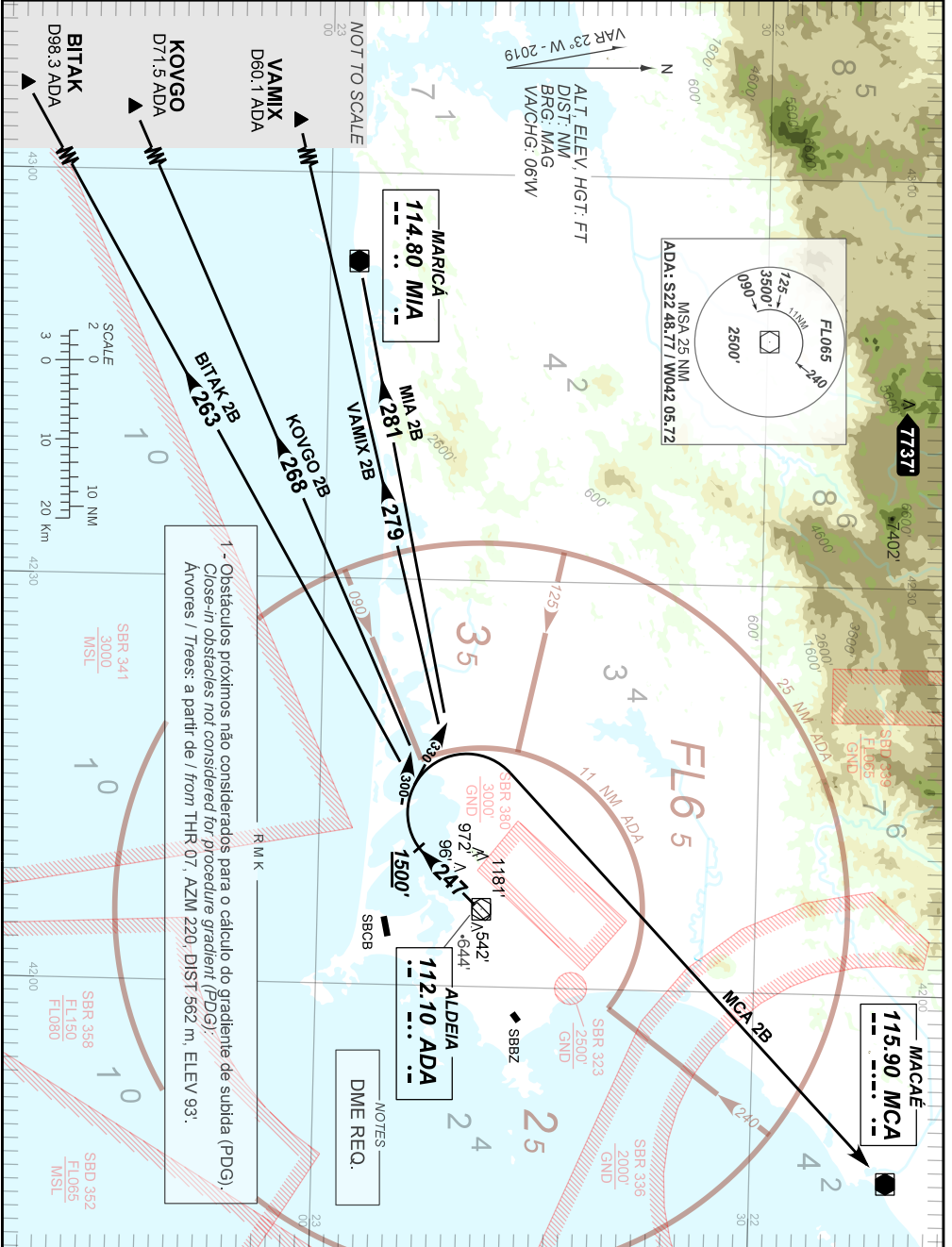
STANDARD DEPARTURE CHART
INSTRUMENT (SID)

SÃO PEDRO DA ALDEIA / São Pedro da Aldeia, MIL (SBES)
RWY 25

AD ELEV: 61'

BITAK 2B - KOVGO 2B - MCA 2B - MIA 2B - VAMIX 2B

TA 5000'	TWR ALDEIA 118.30 122.80 (MIL) 121.50	APP ALDEIA 119.45 120.30	APP RIO 119.00 119.35 126.20 133.30	APP MACAÉ 119.20 120.00 129.30 121.50	ACC CURITIBA 124.00 125.35 133.40 133.60
----------	---	-----------------------------	---	---	--



1 - Obstáculos próximos não considerados para o cálculo do gradiente de subida (PDG).
Close-in obstacles not considered for procedure gradient (PDG).
Anvores / Trees: a partir de 1/ from THR 07, AZMI 220, DIST 562 m, ELEV 93'.

NOTES
DME REQ.

CHANGES: NEW CHART.