

CARTA DE CHEGADA PADRÃO  
 POR INSTRUMENTOS (STAR)  
 STANDARD ARRIVAL CHART  
 INSTRUMENT (STAR)

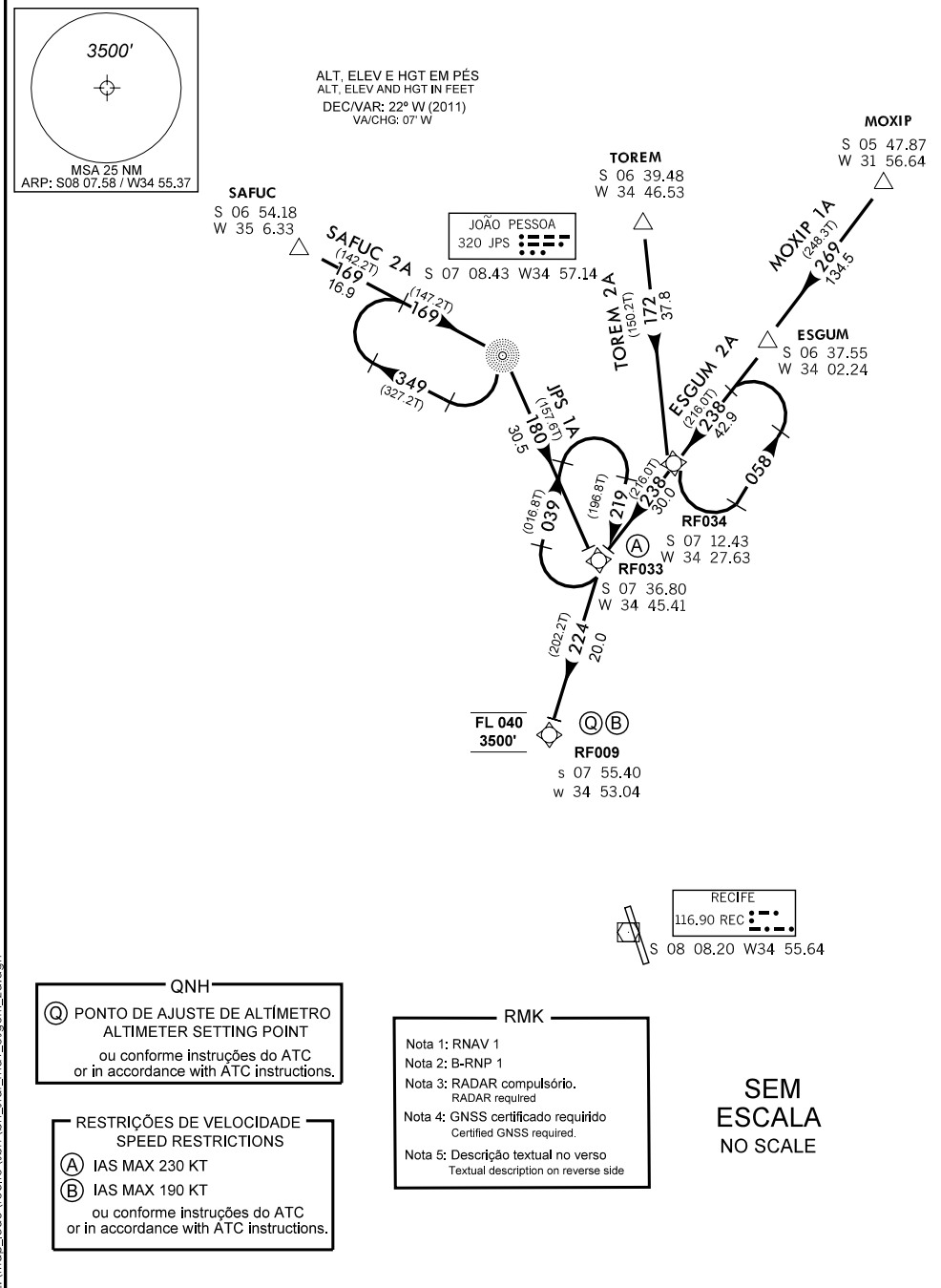
RECIFE / GUARARAPES - GILBERTO FREYRE, INTL (SBRF)

RWY 18

RNAV ESGUM 2A - JPS 1A - MOXIP 1A

SAFUC 2A - TOREM 2A

TA 4000'	ATIS 127.65	ACC RECIFE 128.05 128.70 134.80 135.80 121.50	APP RECIFE 119.50 119.95 129.60 121.50	TWR RECIFE 118.35 122.80 (MIL) 121.50
----------	----------------	--	---	--



**QNH**  
 (C) PONTO DE AJUSTE DE ALTÍMETRO  
 ALTIMETER SETTING POINT  
 ou conforme instruções do ATC  
 or in accordance with ATC instructions.

**RESTRICÇÕES DE VELOCIDADE**  
 SPEED RESTRICTIONS  
 (A) IAS MAX 230 KT  
 (B) IAS MAX 190 KT  
 ou conforme instruções do ATC  
 or in accordance with ATC instructions.

**RMK**  
 Nota 1: RNAV 1  
 Nota 2: B-RNP 1  
 Nota 3: RADAR compulsório.  
 RADAR required  
 Nota 4: GNSS certificado requerido  
 Certified GNSS required.  
 Nota 5: Descrição textual no verso  
 Textual description on reverse side

**SEM ESCALA**  
 NO SCALE

z:\mop\_icab\recife\sbrf\star\_rnav\_esgum\_2a.dgn

DEPARTAMENTO DE CONTROLE DO ESPAÇO AÉREO - COMAER - BRASIL

DESCRIÇÃO TEXTUAL DA CHEGADA

**I - CHEGADA ESGUM 2A:**

APÓS A INTERSEÇÃO FLY-BY ESGUM INTERCEPTAR E MANTER O RUMO 238 (TF) PARA O WAYPOINT FLY-BY RF 034. ENTÃO, MANTER O RUMO 238 (TF) PARA O WAYPOINT FLY-BY RF033 ENTÃO CURVAR À ESQUERDA PARA INTERCEPTAR E MANTER O RUMO 224 (TF) PARA O WAYPOINT FLY-BY RF009.

**II - CHEGADA JPS 1A**

APÓS O NDB JOÃO PESSOA, INTERCEPTAR E MANTER O RUMO 180 (TF) PARA O WAYPOINT FLY-BY RF 033. ENTÃO CURVAR À DIREITA PARA INTERCEPTAR E MANTER O RUMO 224 (TF) PARA O WAYPOINT FLY-BY RF 009.

**III - CHEGADA MOXIP 1A**

APÓS A INTERSEÇÃO FLY-BY MOXIP, INTERCEPTAR E MANTER O RUMO 269 (TF) PARA A INTERSEÇÃO FLY-BY ESGUM, ENTÃO CURVAR À ESQUERDA PARA INTERCEPTAR E MANTER O RUMO 238 (TF) PARA O WAYPOINT FLY-BY RF 034. ENTÃO MANTER O RUMO 238 (TF) PARA O WAYPOINT FLY-BY RF033. ENTÃO, CURVAR À ESQUERDA PARA INTERCEPTAR E MANTER O RUMO 224 (TF) PARA O WAYPOINT FLY-BY RF009.

**IV - CHEGADA SAFUC 2A**

APÓS A INTERSEÇÃO FLY-BY SAFUC, INTERCEPTAR E MANTER O RUMO 169 (TF) PARA O NDB FLY-BY JOÃO PESSOA, ENTÃO CURVAR À DIREITA PARA INTERCEPTAR E MANTER O RUMO 180 (TF) PARA O WAYPOINT FLY-BY RF 033. ENTÃO, CURVAR À DIREITA PARA INTERCEPTAR E MANTER O RUMO 224 (TF) PARA O WAYPOINT FLY-BY RF 009.

**V - CHEGADA TOREM 2A**

APÓS INTERSEÇÃO FLY-BY TOREM, INTERCEPTAR E MANTER O RUMO 172 (TF) PARA O WAYPOINT FLY-BY RF034. ENTÃO, CURVAR À DIREITA PARA INTERCEPTAR E MANTER O RUMO 238 (TF) PARA O WAYPOINT FLY-BY RF 033 ENTÃO, CURVAR À ESQUERDA PARA INTERCEPTAR E MANTER O RUMO 224 (TF) PARA O WAYPOINT FLY-BY RF009.

ARRIVAL TEXTUAL DESCRIPTION

**I - ESGUM 2A ARRIVAL**

AFTER INTERSECTION FLY-BY ESGUM, INTERCEPT AND MAINTAIN COURSE 238 (TF) TO WAYPOINT FLY-BY RF034, THEN MAINTAIN COURSE 238 (TF) TO WAYPOINT FLY-BY RF033, THEN TURN LEFT TO INTERCEPT AND MAINTAIN COURSE 224 (TF) TO WAYPOINT FLY-BY RF009.

**II - JPS 1A ARRIVAL**

AFTER JOÃO PESSOA FLY-BY NDB, INTERCEPT AND MAINTAIN COURSE 180 (TF) TO WAYPOINT FLY-BY RF033, THEN TURN RIGHT TO INTERCEPT AND MAINTAIN COURSE 224 (TF) TO WAYPOINT FLY-BY RF009.

**III - MOXIP 1A ARRIVAL**

AFTER INTERSECTION FLY-BY MOXIP, INTERCEPT AND MAINTAIN COURSE 269 (TF) TO INTERSECTION FLY-BY ESGUM, THEN TURN LEFT TO INTERCEPT AND MAINTAIN COURSE 238 (TF) TO WAYPOINT FLY-BY RF034, THEN MAINTAIN COURSE 238 (TF) TO WAYPOINT FLY-BY RF033, THEN TURN LEFT TO INTERCEPT AND MAINTAIN COURSE 224 (TF) TO WAYPOINT FLY-BY RF 009.

**IV - SAFUC 2A ARRIVAL**

AFTER INTERSECTION FLY-BY SAFUC, INTERCEPT AND MAINTAIN COURSE 169 (TF) TO JOÃO PESSOA FLY-BY NDB, THEN TURN RIGHT TO INTERCEPT AND MAINTAIN COURSE 180 (TF) TO WAYPOINT FLY-BY RF 033. THEN TURN RIGHT TO INTERCEPT AND MAINTAIN COURSE 224 (TF) TO WAYPOINT FLY-BY RF 009.

**V - TOREM 2A ARRIVAL**

AFTER INTERSECTION FLY-BY TOREM, INTERCEPT AND MAINTAIN COURSE 172 (TF) TO WAYPOINT FLY-BY 034, THEN TURN RIGHT TO INTERCEPT AND MAINTAIN COURSE 238 (TF) TO WAYPOINT FLY-BY RF 033, THEN TURN LEFT TO INTERCEPT AND MAINTAIN COURSE 224 (TF) TO WAYPOINT FLY-BY RF009.