

IAC - SBBG

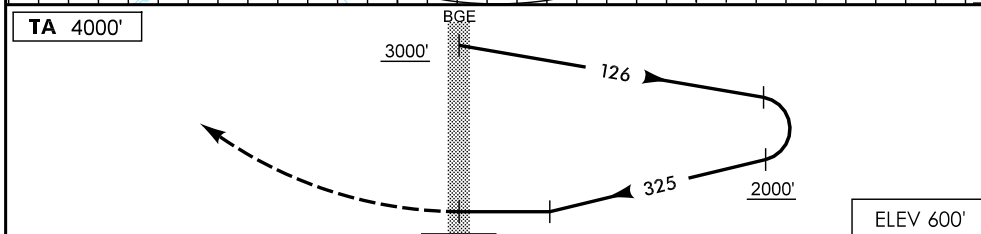
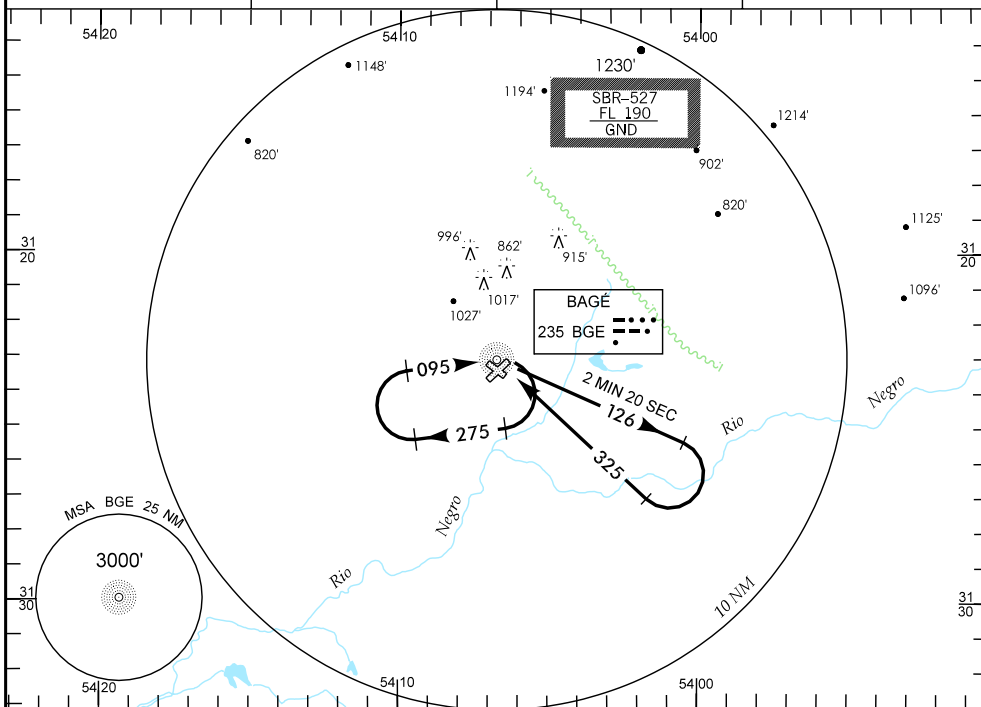
WGS-84

ATIS
NIL

APP BAGÉ
NIL

AFIS BAGÉ
125.85

GNDC
NIL



NM
APROXIMAÇÃO PERDIDA SUBIR PARA 3000' NO QDR 325.
 RMK: NIL.

C	POUSO DIRETO RWY 32		IFR OPS DIURNA		PARA CIRCULAR				
	NDB								
A	MDA 1240'		TETO 700'		CAT	MDA	TETO	VIS	
B	1600 M				A	1240'	700'	1600 M	
C	2800 M				B	1330'	800'		
D	NA				C			3200 M	
E					D			NA	
					E				
RAZÃO DE DESCIDA NA APROXIMAÇÃO FINAL									
KT	090	110	120	130	140	160			
FPM	700								

V:\AIP-MA\FM\FABAGE-SBBG\bbg_lgc_ndb_rwy32.dgn

DEPARTAMENTO DE CONTROLE DO ESPAÇO AÉREO - COMAER - BRASIL