

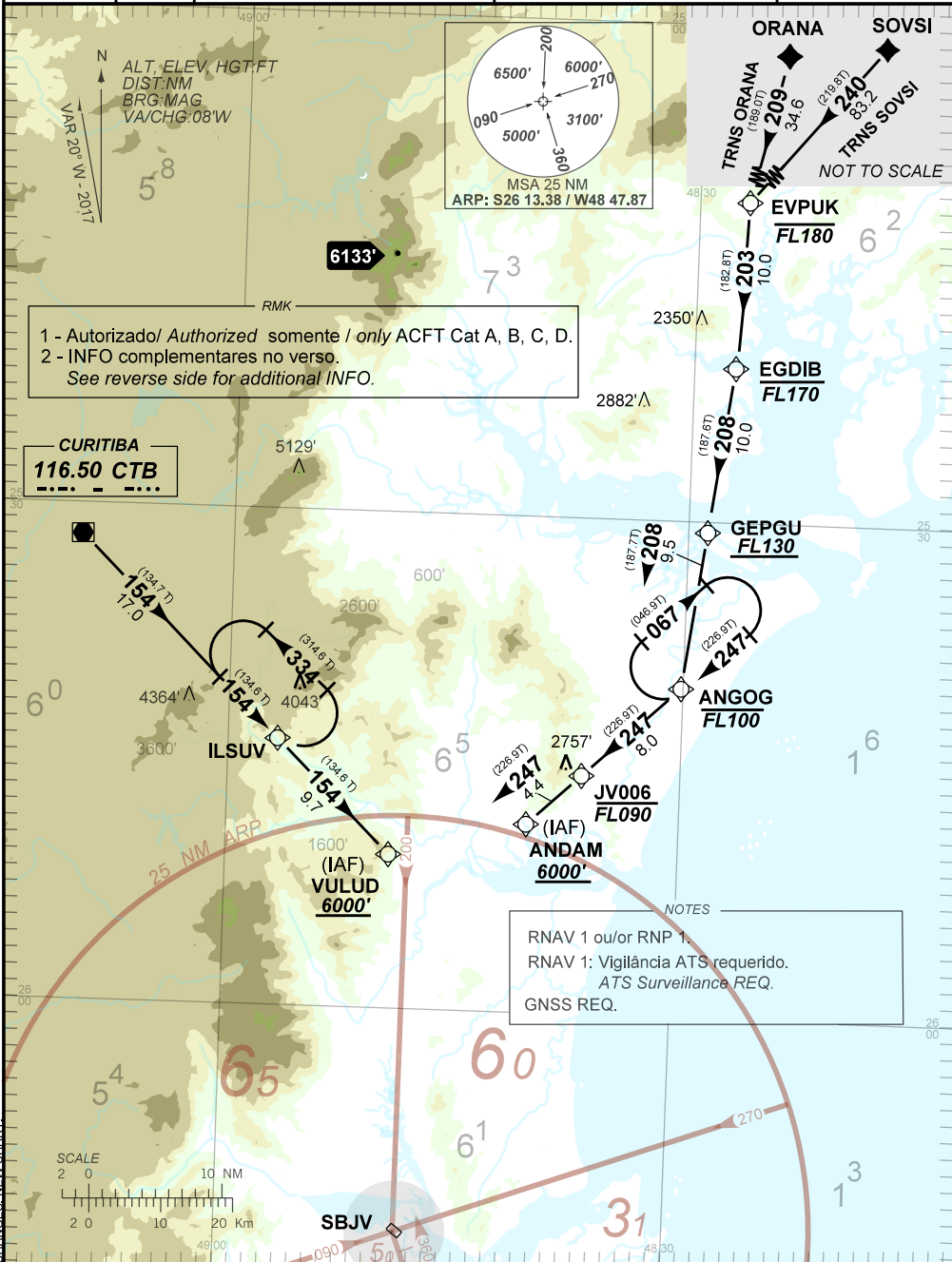
STANDARD ARRIVAL CHART
INSTRUMENT (STAR)

JOINVILLE / Lauro Carneiro de Loyola (SBJV)
RWY 15

AD ELEV: 15'

RNAV CTB 1A - EVPUK 1A

TA 7000'	ATIS NIL	ACC CURITIBA 132.80 126.50 125.80 127.20 121.50	APP CURITIBA 119.70 119.95 120.65 120.95 129.55 133.15 121.50	TWR JOINVILLE 118.00
----------	-------------	---	---	-------------------------



CHANGES: NEW CHART

FALHA DE COMUNICAÇÃO
COMMUNICATION FAILURE

Acionar transponder A7600 ...

CTB 1A - completar chegada até VULUD e executar procedimento em uso pelo ATC.

EVPUK 1A - completar chegada até ANDAM e executar procedimento em uso pelo ATC.

Set transponder A7600 ...

CTB 1A - complete arrival until VULUD and execute procedure in use by ATC.

EVPUK 1A - complete arrival until ANDAM and execute procedure in use by ATC.