

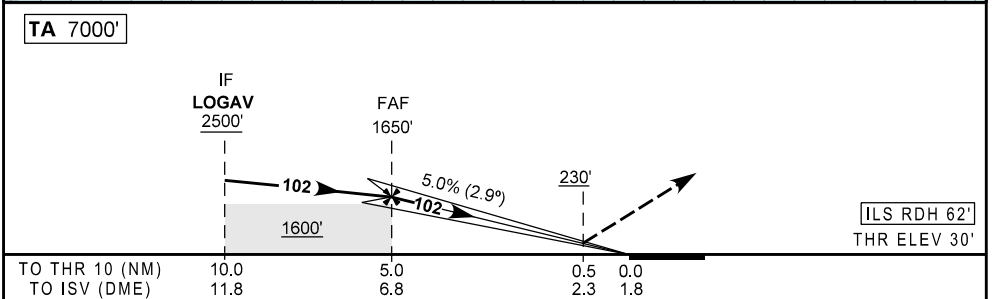
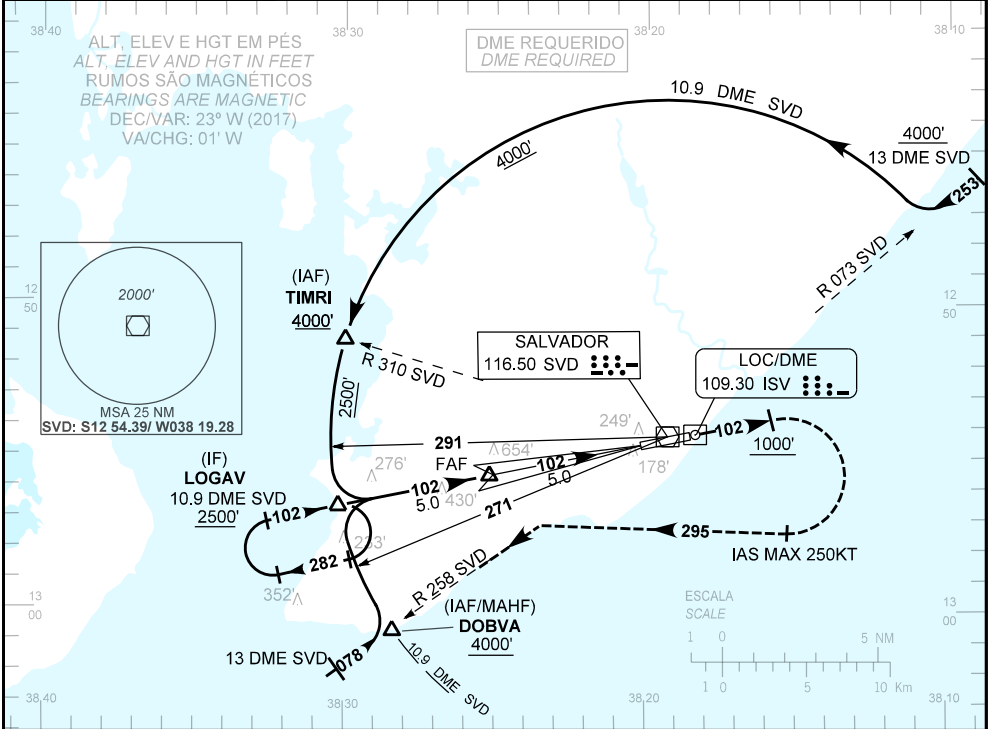
CARTA DE APROXIMAÇÃO
POR INSTRUMENTOS (IAC)

SALVADOR / Deputado Luís Eduardo Magalhães, INTL (SBSV)

INSTRUMENT APPROACH CHART (IAC)

ILS Y RWY 10

AD ELEV: 66'	ATIS 127.75	APP SALVADOR 119.35 119.80 120.80 129.45	TWR SALVADOR 118.30 118.60 118.95 121.10 121.50	GNDC SALVADOR 121.90
RMK: D-ATIS AVBL via DATA LINK.		<p>Aproximação Perdida: Subir para 4000'. Manter RDL 102 SVD até cruzar 1000'. Então, curvar à direita proa 295 para interceptar a RDL 258 SVD até DOBVA e ingressar no arco DME 10.9 SVD para espera em LOGAV.</p> <p><i>Missed Approach: Climb to 4000'. Maintain 102 SVD RDL until passing 1000'. Then, turn right heading 295 to intercept 258 SVD RDL up to DOBVA to join 10.9 DME SVD arc for holding at LOGAV.</i></p>		



TO THR 10 (NM) 10.0		TO ISV (DME) 11.8		10.0		5.0		0.5		0.0									
				11.8		6.8		2.3		1.8									
NIL				RWY10		KT		090		110		130		150		170		190	
				ALT		FPM		500		600		700		800		900		NA	
				(HGT)		FAF-MAPT													
POUSO DIRETO STRAIGHT-IN		CAT		A		B		C		D		E							
		DA / OCH / TETO						230 / 200 / 200											
CAT I		ALS/NO ALS/RVR ALS (m)						NIL / 1200 / NIL										NA	
CIRCULAR TO CIRCLE		MDA / OCH / TETO																	
		VIS (m)																NA	

MODIFICAÇÕES / CHANGES: CARTA NOVAINEW CHART.