

**INSTRUMENT APPROACH  
CHART (IAC)**

**SÃO PAULO / Congonhas (SBSP)**

**AD ELEV: 2631'**

**RNAV(GNSS) S RWY 17L**

D-ATIS 127.65	APP SÃO PAULO 129.75 119.15 120.45 120.85 133.85 121.50	TWR SÃO PAULO 118.05 127.15 121.50	GNDC SÃO PAULO 121.90
------------------	---	---------------------------------------	--------------------------

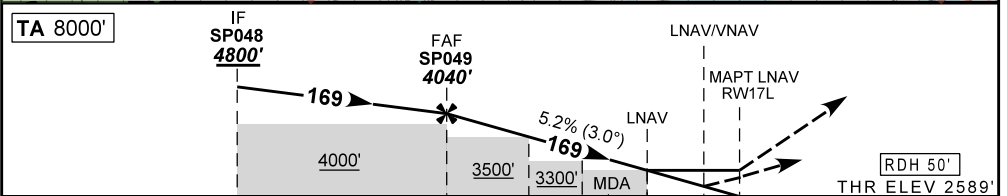
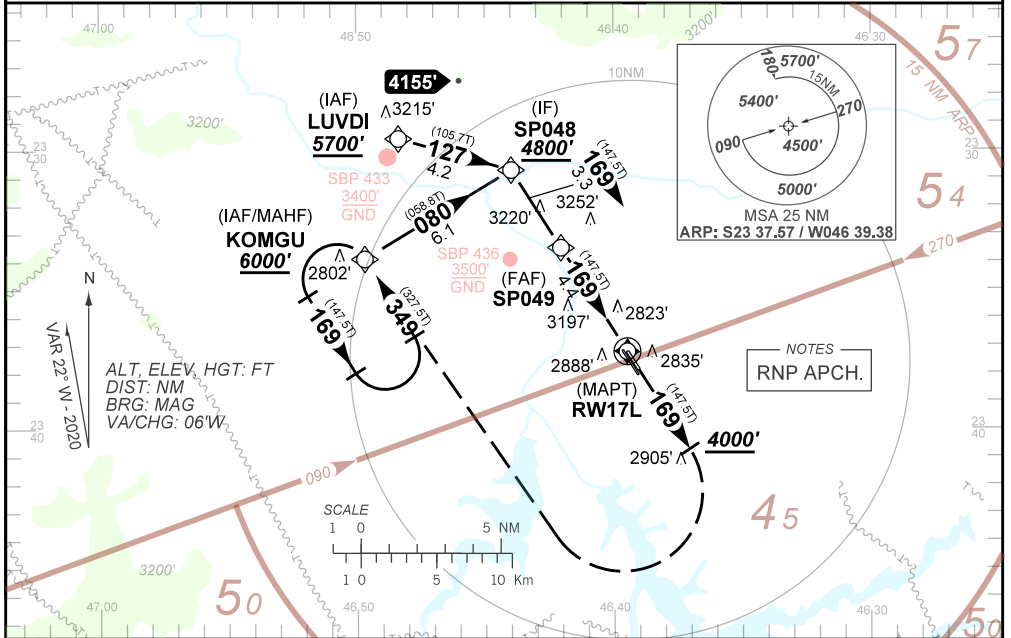
N/A	FINAL CRS 169°	FAF 4040'	LNAV/VNAV DA / (OCH): 3040' / (451')	LNAV MDA / (OCH): 3090' / (510')
-----	-------------------	--------------	---	-------------------------------------

APCH Perdida: 1) Subir para **6000'**. Manter rumo **169** até cruzar **4000'**. Curvar à DIREITA direto KOMGU para espera.

Missed APCH: 1) Climb to **6000'**. Maintain course **169** until passing **4000'**. Turn RIGHT direct to KOMGU for holding.

RMK: 1) Para sistemas BARO-VNAV não compensados, procedimento LNAV/VNAV não autorizado abaixo de -10°C.

1) For uncompensated systems BARO-VNAV, LNAV/VNAV procedure not authorized below -10°C.



TO THR 17L (NM) 7.7 4.4 3.0 2.1 1.4 1.3 0.0

	SP049	4.0	3.0	2.0	1.4	RW17L		KT	090	110	130	150	170	190
	4040	3913	3595	3276	3090	ALT		FPM	500	600	700	800	NA	
	1451	1324	1006	687	510	(HGT)		FAF-MAPT			NA			

STRAIGHT-IN	CAT	A	B	C	D	E
		3040' / (451')				
LNAV/VNAV	DA / (OCH)	1400 / 2100 / NIL				
	ALS/NO ALS/RVR ALS (m)	NIL / 1600 / NIL				
LNAV	MDA / (OCH)	3090' / (510')				
	ALS/NO ALS/RVR ALS (m)	NIL / 2400 / NIL		NIL / 2400 / NIL		
CIRCLING	MDA / (OCH)	NA				
	VIS (m)					

CHANGES: PROC. IDENT.