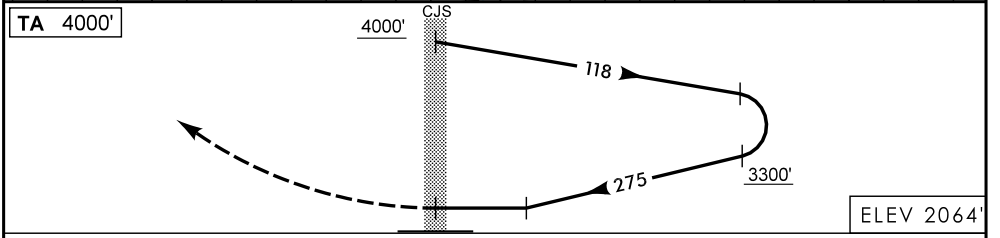
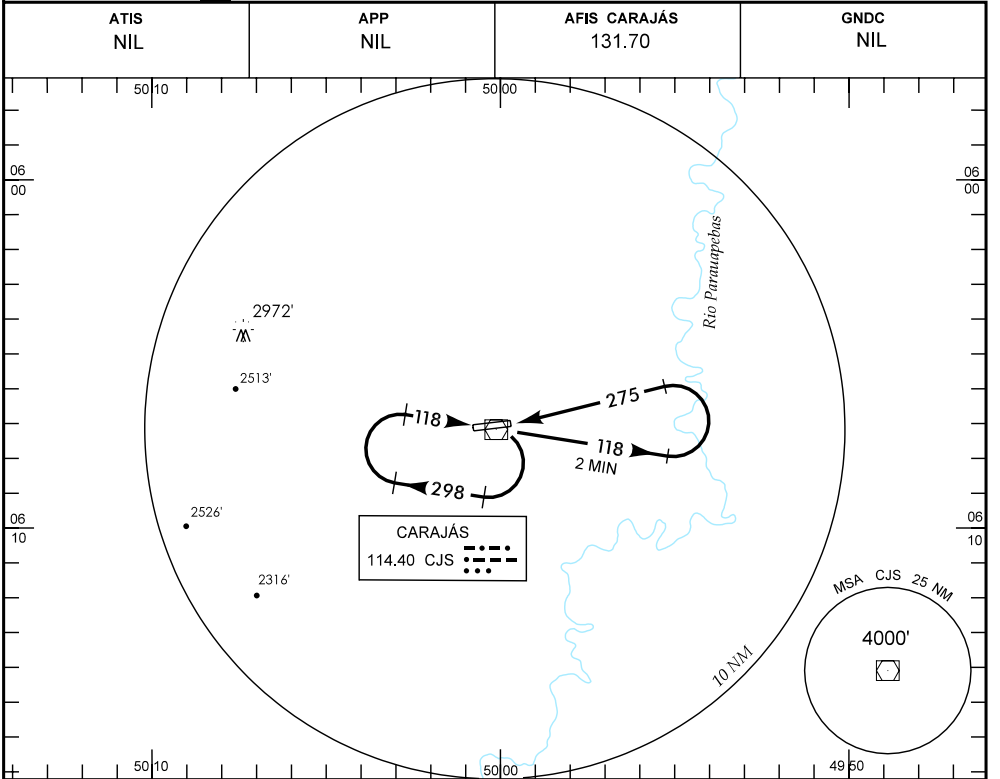


IAC - SBCJ WGS-84



NM

APROXIMAÇÃO PERDIDA SUBIR PARA 4000' NA RDL 275 APÓS APROAR O VOR CJS.

RMK: ACFT CAT E CIRCULE SECT S DO AD.

C	POUSO DIRETO RWY 28		IFR OPS DIURNA / NOTURNA		PARA CIRCULAR			
	VOR				(RMK)			
A	MDA 2580'		TETO 600'		CAT	MDA	TETO	VIS
A	1600 M				A	2580'	600'	1600 M
B	2400 M				B	2680'	700'	3200 M
C	2800 M				C	2760'	800'	
D	3200 M				D	2850'		
E					E			

RAZÃO DE DESCIDA NA APROXIMAÇÃO FINAL											
KT	090	110	130	150	170	190					
FPM	700										