

# SID - SBCJ

WGS-84

PARAUPEBAS / CARAJÁS

PA-BRASIL

# EPKER - ILSOL - NEDEN - VUMIL

AFIS CARAJÁS 131.70

ACC AMAZÔNICO 126.15 124.35 121.50

## SEM ESCALA

**KOGPO**  
s05 02.08  
w050 59.71

**EROPA**  
s03 46.01  
w051 12.37

**TUCURUI**  
112.90  
220  
s03 48.08 w049 43.28

RMK 49|30

- 1 - GRADIENTE MMN DE SUBIDA 3,3%.
- 2 - INICIAR CURVAS APÓS CRUZAR 2600'.
- 3 - TA 4000'

05 30 05 30

**MARABÁ**  
113.70 MRB  
370  
s05 22.09 w049 08.11

SEM ESCALA

49|30

**EPKER**  
s05 43.04  
w050 12.52

**NEDEN**  
s05 40.23  
w049 56.85

**ILSOL**  
s05 49.42  
w049 39.63

SAÍDA EPKER

SAÍDA NEDEN

SAÍDA ILSOL

**CARAJÁS**  
1700 CRJ  
s06 06.69 w050 00.20

**CARAJÁS**  
114.40 CJS  
s06 07.18 w050 00.12

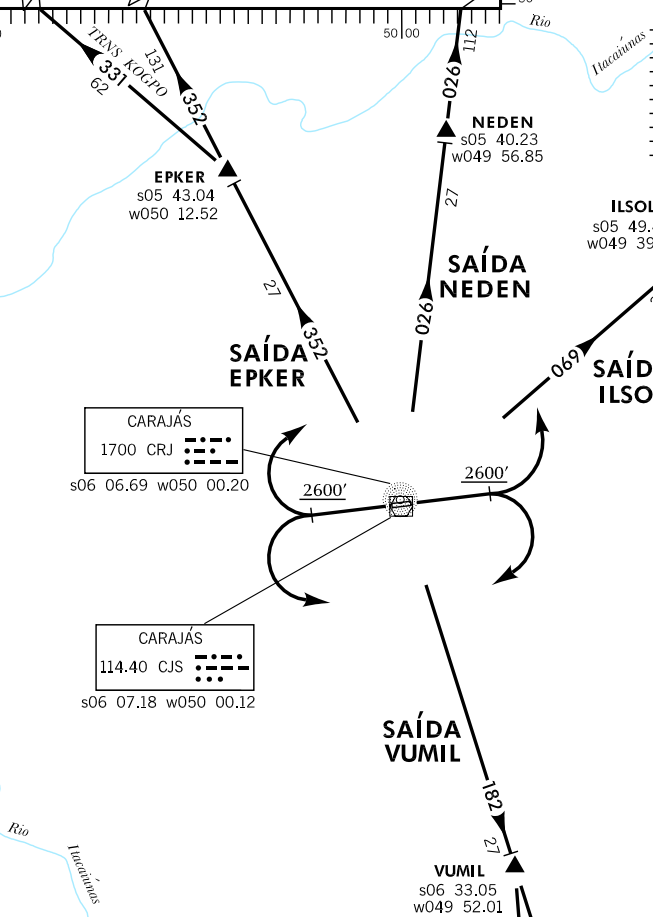
SAÍDA VUMIL

**VUMIL**  
s06 33.05  
w049 52.01

**KOLGI**  
s07 26.73  
w049 47.90

## SEM ESCALA

**ARAGUAIA**  
230 ARG  
s08 21.22 w049 17.95



ESCALA: 1:1.000.000

10NM 0 10 20