

STANDARD DEPARTURE CHART
INSTRUMENT(SID)

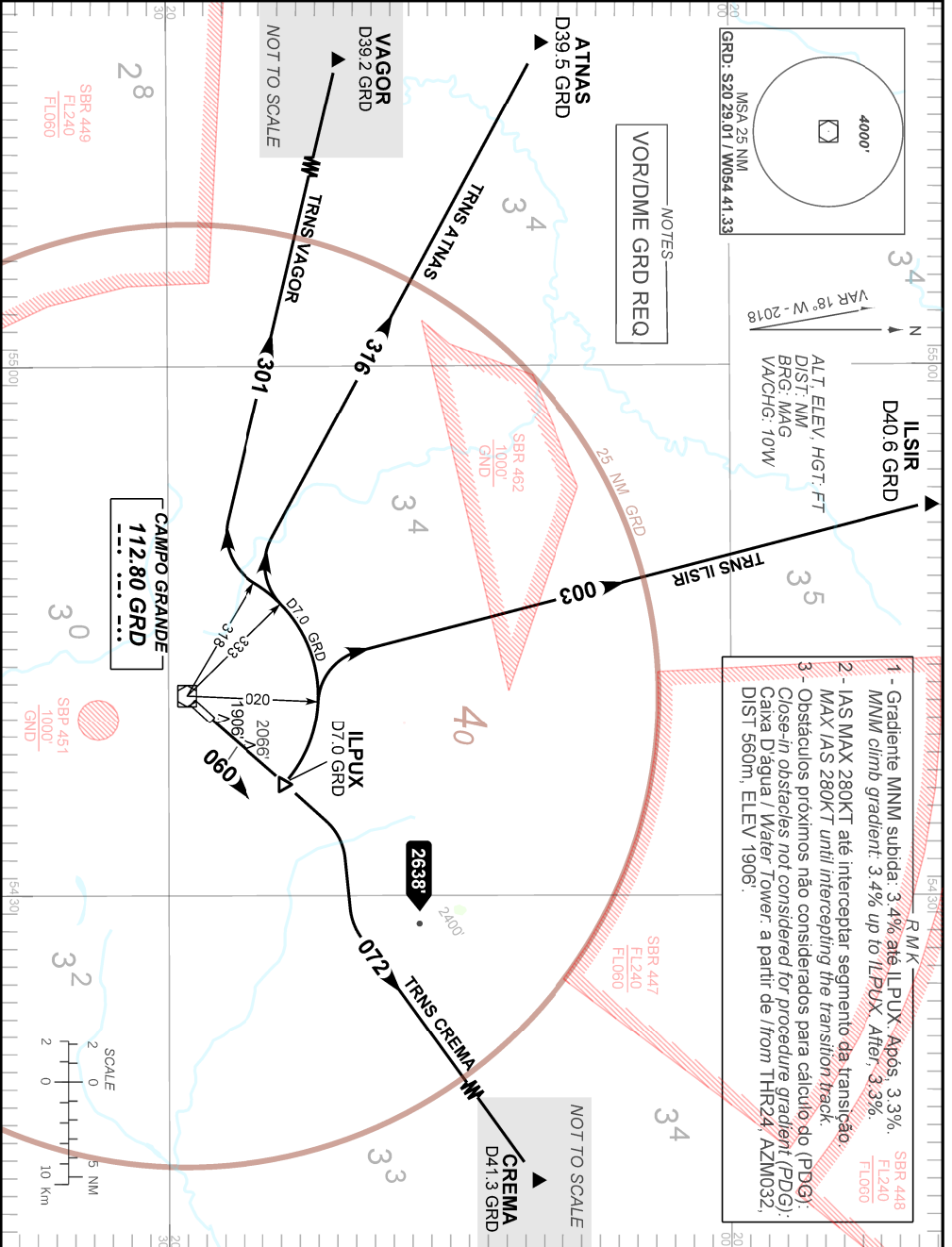
CAMPO GRANDE / Campo Grande, INTL (SBCG)

RWY 06

ILPUX 1A

AD ELEV: 1834'

TA 5000'	TWR CAMPO GRANDE 118.10 121.50	APP CAMPO GRANDE 119.35 119.65 120.20 121.00 121.50	ACC CURITIBA 123.70 124.85 128.15 129.25 121.50
----------	-----------------------------------	---	---



R/M/K

- 1 - Gradiente MNM subida: 3.4% até ILPUX. Após, 3.3% MNM climb gradient: 3.4% up to ILPUX. After, 3.3%
- 2 - IAS MAX 280KT até interceptar segmento da transição. MAX IAS 280KT until intercepting the transition track.
- 3 - Obstáculos próximos não considerados para cálculo do (PDG). Close-in obstacles not considered for procedure gradient (PDG). Caixa D'água / Water Tower: a partir de 1/ from THR24, AZM032. DIST 560m, ELEV 1906'

SBR 448 FL240 FL060