

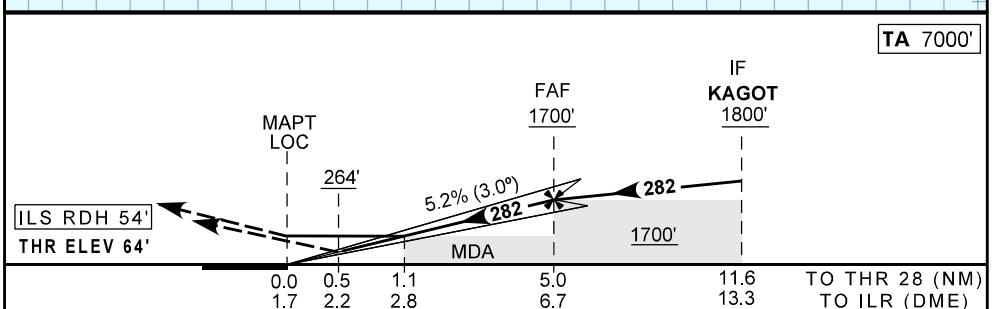
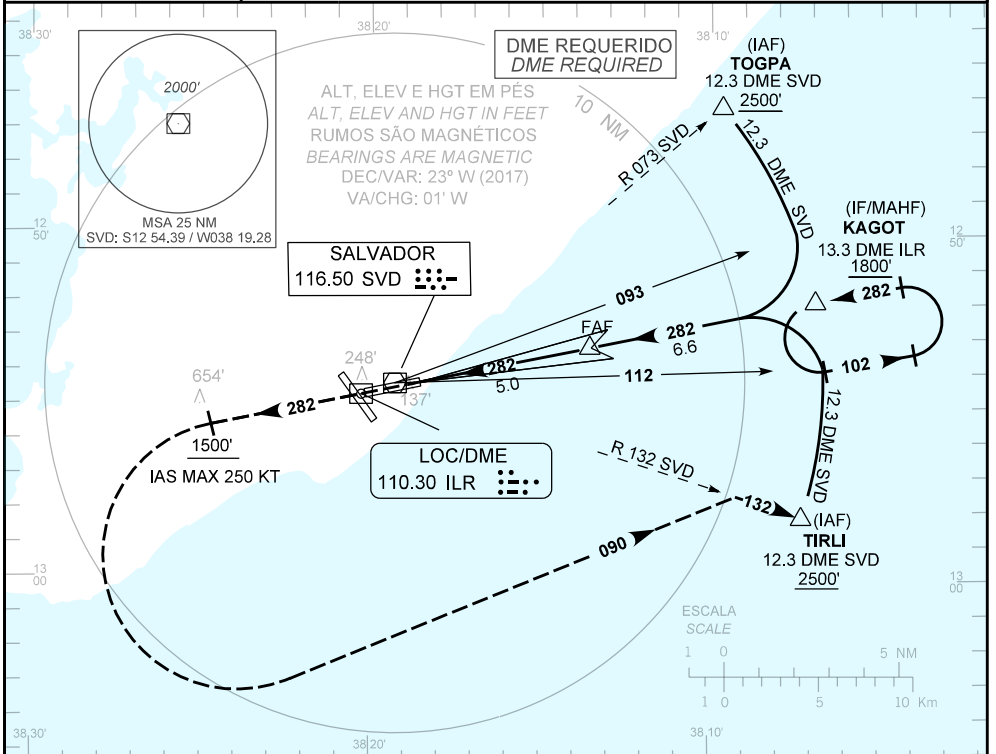
CARTA DE APROXIMAÇÃO
POR INSTRUMENTOS (IAC)

SALVADOR / Deputado Luís Eduardo Magalhães, INTL (SBSV)

ILS Y ou/or LOC Y RWY 28

INSTRUMENT APPROACH CHART (IAC)

AD ELEV: 66'	ATIS 127.75	APP SALVADOR 119.35 119.80 120.80 129.45	TWR SALVADOR 118.30 118.60 118.95 121.10 121.50	GNDC SALVADOR 121.90
<p>RMK: D-ATIS AVBL via DATA LINK.</p> <p>Aproximação Perdida: Subir para 2500'. Manter curso 282 até cruzar 1500'. Então, curvar à esquerda proa 090 para interceptar a RDL 132 SVD e ingressar no arco DME 12.3 SVD para espera em KAGOT.</p> <p><i>Missed Approach: Climb to 2500'. Maintain 282 course until passing 1500'. Then, turn left heading 090 to intercept 132 SVD RDL to join 12.3 DME SVD arc for holding at KAGOT.</i></p>				



RWY28	1.1	2.0	3.0	4.0	FAF		KT	090	110	130	150	170	190
ALT	470	754	1073	1392	1700		FPM	500	600	700	800	900	NA
(HGT)	410	690	1009	1328	1636		FAF-MAPT	NA					

POUSO DIRETO STRAIGHT-IN	CAT	A	B	C	D	E	
	MDA / OCH / TETO	264 / 200 / 200					NA
CAT I	ALS/NO ALS/ RVR ALS (m)	NIL / 1200 / NIL					NA
	MDA / OCH / TETO	470 / 410 / 500					
LOC		NIL / 1600 / NIL			NIL / 1900 / NIL		
	MDA / OCH / TETO	NA					
CIRCULAR TO CIRCLE		NA					
	VIS (m)	NA					

MODIFICAÇÕES / CHANGES: CARTA NOVA/NEW CHART.