

**INSTRUMENT APPROACH
CHART (IAC)**

RIO DE JANEIRO / GALEÃO - Antônio Carlos Jobim, INTL (SBGL)

RNAV (GNSS) Y RWY 10

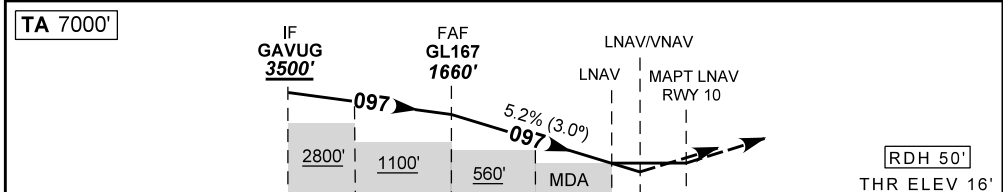
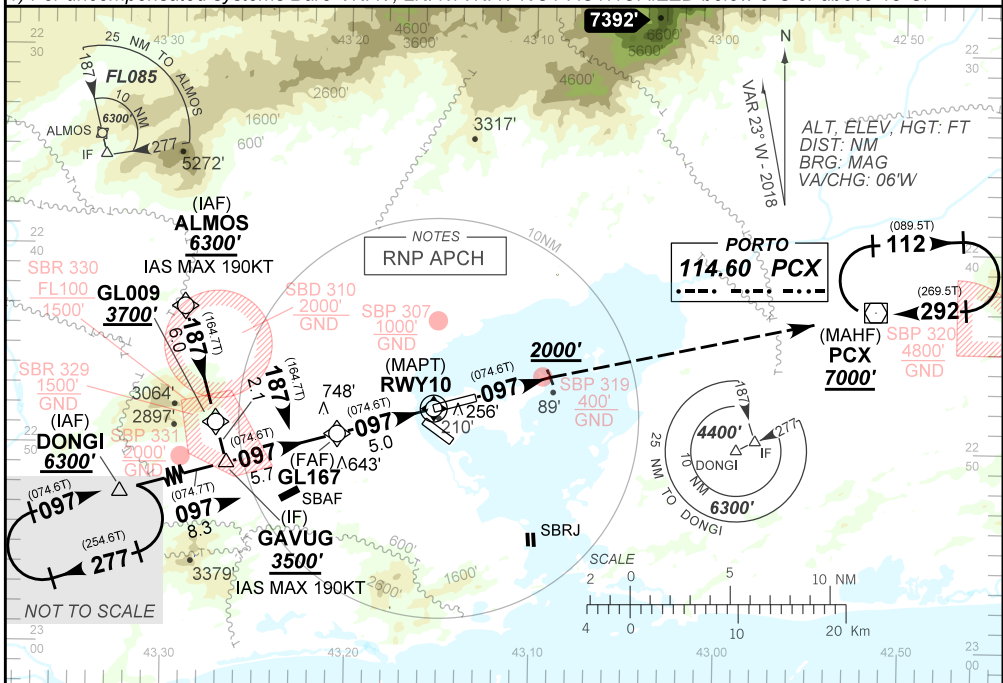
AD ELEV: 28'

D-ATIS 127.60	APP R10 126.20 133.30 134.40 121.25 129.80 128.90 119.35 121.50	TWR GALEÃO 118.00 118.20 121.50	GNDC GALEÃO 128.35 121.65
N/A	FINAL CRS 097°	FAF 1660'	LNAV/VNAV DA / (OCH): 371' / (355')
			LNAV MDA / (OCH): 460' / (450')

APCH Perdida: Subir para **7000'**. Manter rumo **097°** até **2000'**. Após, curvar à DIREITA direto VOR PCX para espera.

Missed APCH: Climb to **7000'**. Maintain course **097°**, until **2000'**. Then, turn RIGHT direct to PCX VOR for holding

RMK: 1) Para sistemas não compensados Baro-VNAV, LNAV/VNAV NAO AUTORIZADO abaixo de 0°C ou acima de 48°C.
1) For uncompensated systems Baro-VNAV, LNAV/VNAV NOT AUTHORIZED below 0°C or above 48°C.



TO THR 10 (NM)	10.7	8.7	5.0	3.0	1.2	1.0	0.0
----------------	------	-----	-----	-----	-----	-----	-----

	GL167	4.0	3.0	2.0	1.2	RWY10	KT	090	110	130	150	170	190
	1660	1340	1021	703	460	ALT	FPM	500	600	700	800	900	1000
	1644	1324	1005	687	450	(HGT)	FAF-MAPT	NA					

STRAIGHT-IN	CAT	A	B	C	D	E
	DA / (OCH)	371' / (355')				
LNAV/VNAV	ALS/NO ALS/ RVR ALS (m)	750 / 1600 / 700	800 / 1600 / 700	900 / 1600 / 850		
	MDA / (OCH)	460' / (450')				
LNAV	ALS/NO ALS/ RVR ALS (m)	750 / 1600 / 700	800 / 1600 / 700	1400 / 2100 / 1250		
	MDA / (OCH)	NA				
CIRCLING	MDA / (OCH)	NA				
	VIS (m)	NA				

CHANGES: APP, FIX, PROC.