

STANDARD DEPARTURE CHART  
INSTRUMENT (SID)

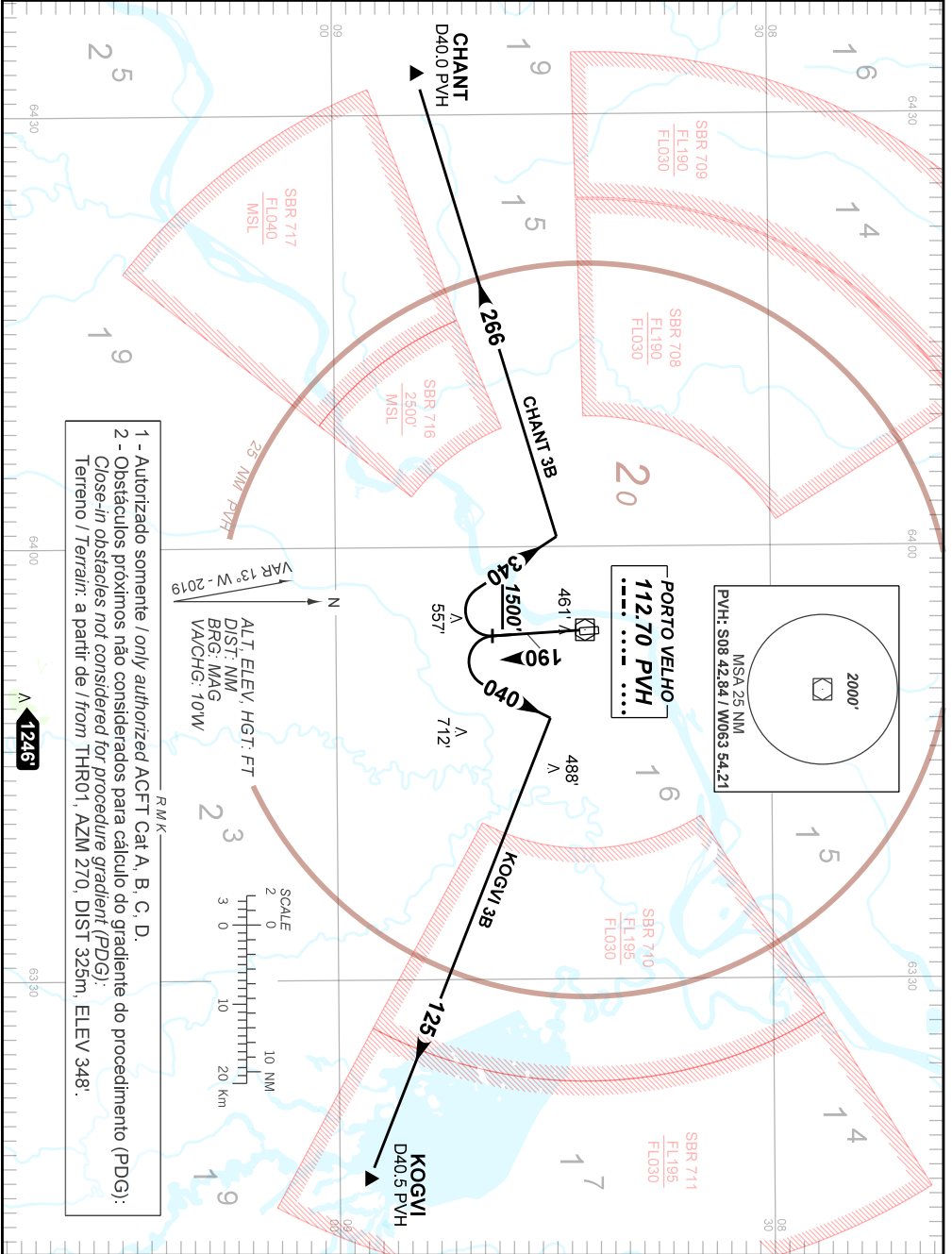
PORTO VELHO / Gov. Jorge Teixeira de Oliveira, INTL (SBPV)

RWY 19

AD ELEV: 295'

CHANT 3B - KOGVI 3B

|          |                                  |                                  |  |
|----------|----------------------------------|----------------------------------|--|
| TA 3000' | TWR PORTO VELHO<br>118.20 121.50 | APP PORTO VELHO<br>120.25 120.80 | ACC AMAZÔNICO<br>125.85 128.30 126.50<br>135.25 121.50 |
|----------|----------------------------------|----------------------------------|--|



1 - Autorizado somente / only authorized ACFT Cat A, B, C, D.  
2 - Obstáculos próximos não considerados para cálculo do gradiente do procedimento (PDG):  
Close-in obstacles not considered for procedure gradient (PDG):  
Terreno / Terrain: a partir de / from THR01, AZM 270, DIST 325m, ELEV 348'.

CHANGES: NEW CHART.