

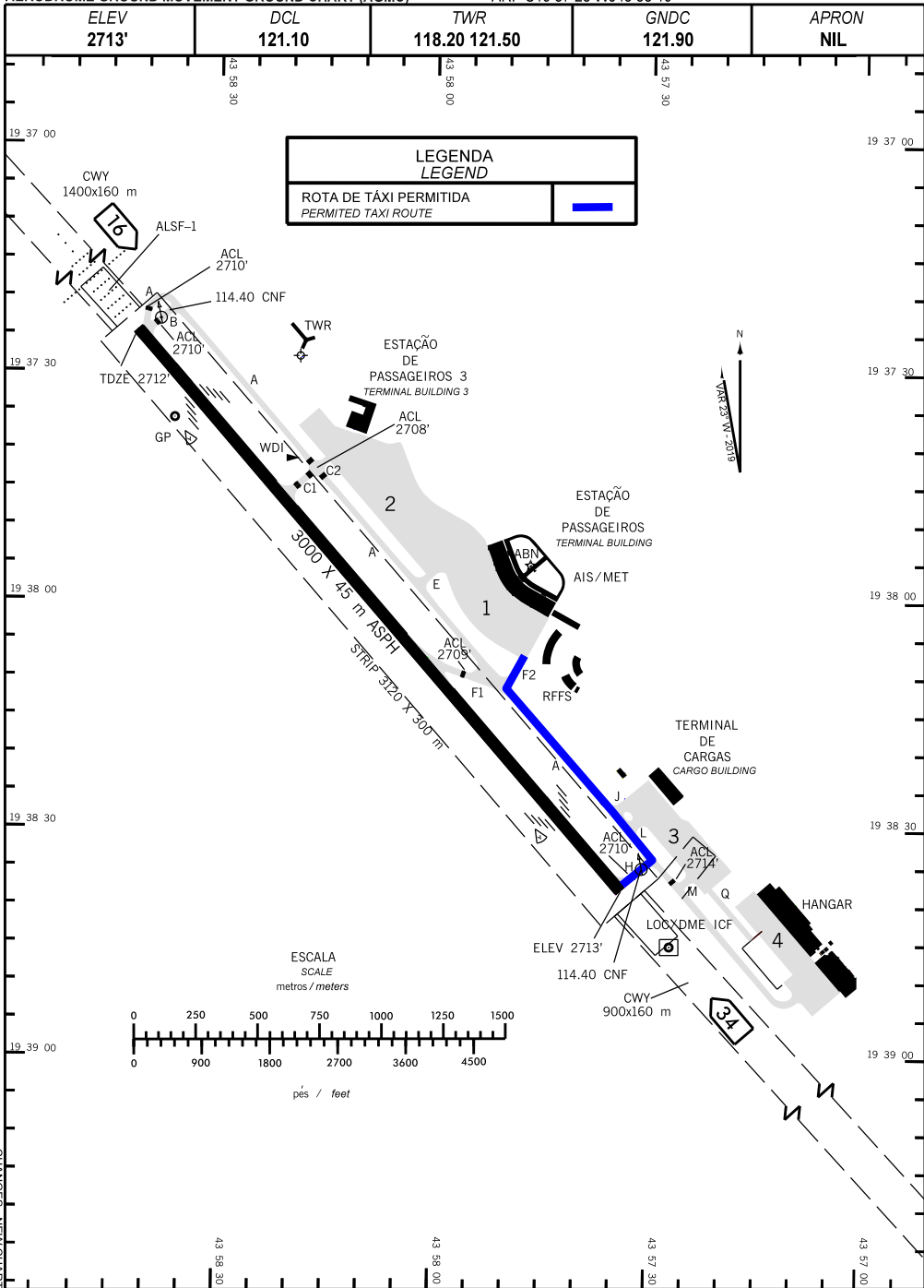
**CARTA DE MOVIMENTO NO SOLO DE AERÓDROMO (AGMC)**

**BELO HORIZONTE / Tancredo Neves, INTL (SBCF) MG-BRASIL**

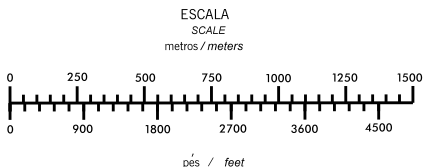
**AERODROME GROUND MOVEMENT GROUND CHART (AGMC)**

ARP S19 37 28 W043 58 19

**LDG ROTA 1**



LEGENDA LEGEND	
ROTA DE TAXI PERMITIDA PERMITTED TAXI ROUTE	



CHANGES: NEW CHART

## INSTRUÇÕES:

ROTA 1: Após o pouso na RWY 16, a aeronave entra na TWY HOTEL e, em seguida, virar à esquerda na TWY ALFA e, depois virar à direita na TWY FOX 2.

## INSTRUCTIONS:

ROUTE 1: After landing on RWY 16, the aircraft enters TWY HOTEL and then turns left onto ALFA, then turn right onto TWY FOX 2.

## DADOS DO AERÓDROMO

## AERODROME DATA

TAXIWAYS / PISTA TWY / RWY	LARGURA WIDTH	SUPERFÍCIE SURFACE	RESISTÊNCIA STRENGTH
A (BTN TWY B e / and pátio / apron GOL)	23 m	ASPH	66/F/B/W/T
A (BTN TWY B e / and THR 16)	26 m	CONC	74/R/B/W/T
B	27 m	CONC	71/R/B/W/T
C1	26 m	ASPH	58/F/B/W/T
C2	41 m	ASPH	83/F/B/W/T
E	38 m	ASPH	83/F/B/W/T
F1	26 m	ASPH	61/F/B/W/T
F2	34 m	ASPH	56/F/B/W/T
H	26 m	ASPH	60/F/B/W/T
J	32 m	ASPH	56/F/B/W/T
L	32 m	ASPH	63/F/B/W/T
M	49, 5 m	ASPH	83/F/B/W/T
Q	23 m	ASPH	83/F/B/W/T
16/34	45 m	ASPH	83/F/B/W/T

## PÁTIOS:

RESISTÊNCIA: PÁTIO 1: PCN 78/R/B/W/T  
PÁTIO 2: PCN 81/R/B/W/T  
PÁTIO 3: PCN 77/R/B/W/T  
PÁTIO 4: PCN 60/R/A/W/U

## APRONS:

BEARING STRENGTH: APRON 1: PCN 78/R/B/W/T  
APRON 2: PCN 81/R/B/W/T  
APRON 3: PCN 77/R/B/W/T  
PÁTIO 4: PCN 60/R/A/W/U

RESTRICÇÕES: Pátio 1, 2, 3 e 4: Tipo de piso: CONC

RESTRICTIONS: Apron 1, 2, 3 and 4: Type of Surface: CONC

PONTO DE RISCO DE COLISÃO: NIL

HOT SPOT: NIL