

**INSTRUMENT APPROACH
CHART (IAC)**

VITÓRIA / Eurico de Aguiar Salles (SBVT)

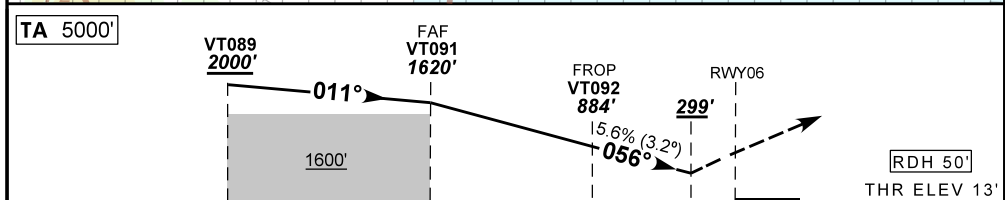
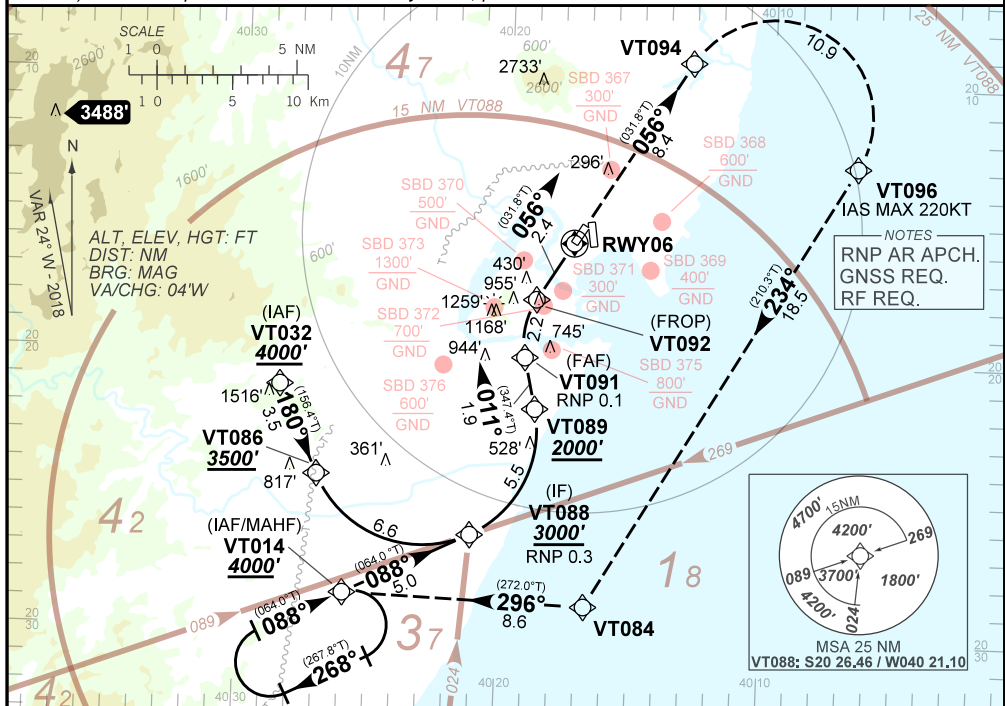
AD ELEV: 34'

RNAV(RNP) R RWY 06

ATIS 127.575	APP VITÓRIA 119.85 121.50	TWR VITÓRIA 118.10 121.50	GNDC VITÓRIA 121.95
N/A	FINAL CRS 056°	FAF 1620'	DA / (OCH): 299' / (286')
			N/A

APCH Perdida: 1) Subir para **4000'**. Manter rumo **056°** para VT094. Curvar à DIREITA para VT096. Após, manter rumo **234°** para VT084. Curvar à DIREITA rumo **296°** para espera em VT012.
Missed APCH: 1) Climb to **4000'**. Maintain course **056°** up to VT094. Turn RIGHT up to VT096. Then, maintain course **234°** up to VT084. Turn RIGHT course **296°** up to VT012 for holding.

RMK: 1) For uncompensated BARO-VNAV systems, procedure not authorized below -10°C or above 45°C.



TO THR 06 (NM)	6.5	4.6	2.4	0.6	0.0
----------------	-----	-----	-----	-----	-----

VT091	4.0	3.0	VT083	1.0	0.6	RWY06	KT	090	110	130	150	170	190
1620	1422	1082	884	403	286	ALT	FPM	500	600	700	NA	NA	NA
1607	1409	1069	871	390	273	(HGT)	FAF-MAPT	NA					

STRAIGHT-IN	CAT	A	B	C	D	E	
	DA / (OCH)	299' / (286')				NA	
	ALS/NO ALS/ RVR ALS (m)	NIL / 1600 / NIL					

**AUTORIZAÇÃO ESPECIAL PARA AERONAVE E TRIPULAÇÃO REQUERIDA
SPECIAL AUTHORIZATION FOR AIRCRAFT AND CREW REQUIRED**

Aprovação Específica
(ANAC IS 91.001)
Específic Approval
(ANAC IS 91.001)

CHANGES: NEW CHART