

**INSTRUMENT APPROACH  
CHART (IAC)**

**AD ELEV: 171'**

**NATAL / Augusto Severo, MIL (SBNT)**

**CARTA DE USO EXCLUSIVO  
ACFT MILITARES**

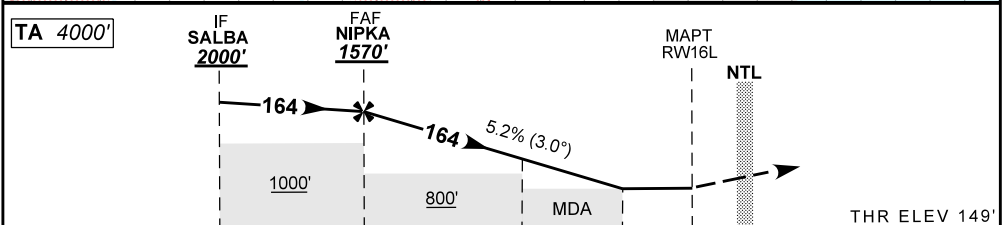
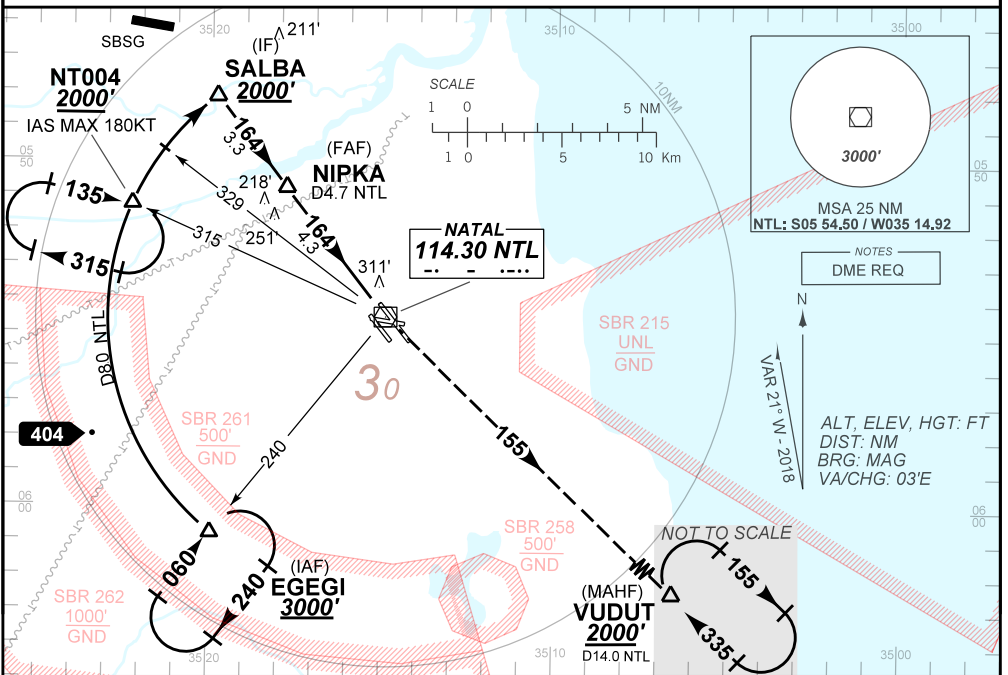
**VOR W RWY 16L**

D-ATIS <b>132.65</b>	APP NATAL <b>119.65 119.30 120.65 129.80 121.50</b>	TWR NATAL <b>118.70 122.80 (MIL) 121.50</b>	GNDC NATAL <b>121.90</b>
-------------------------	--	--	-----------------------------

VOR/DME NTL <b>114.30 MHz</b>	FINAL CRS <b>164°</b>	FAF <b>1570'</b>	<b>N/A</b>	VOR/DME MDA / (OCH): <b>560' / (420')</b>
----------------------------------	--------------------------	---------------------	------------	--

APCH Perdida: Subir para **2000'**. Manter rumo **155** até VUDUT para espera.  
Missed APCH: Climb to **2000'**. Maintain course **155** up to VUDUT for holding.

RMK: NIL



TO THR 16L (NM)	7.6	4.3	2.1	1.2	0.0
TO NTL (DME)	8.0	4.7	2.5	1.6	0.4

	NIPKA	4.0	3.0	2.0	1.2	RW16L	KT	090	110	130	150	170	190
	1570	1473	1155	836	560	ALT	FPM	500	600	700		NA	
	1421	1324	1006	687	411	(HGT)	FAF-MAPT					NA	

STRAIGHT-IN	CAT	A	B	C	D	E
VOR	MDA / (OCH)	560' / (420')			NA	
	ALS/NO ALS/RVR ALS (m)	NIL / 1700 / NIL				
CIRCLING	MDA / (OCH)	NA				
	VIS (m)					

CHANGES: EAC, FREQ, PROFILE