

**INSTRUMENT APPROACH  
CHART (IAC)**

**ALTAMIRA / Altamira (SBHT)**

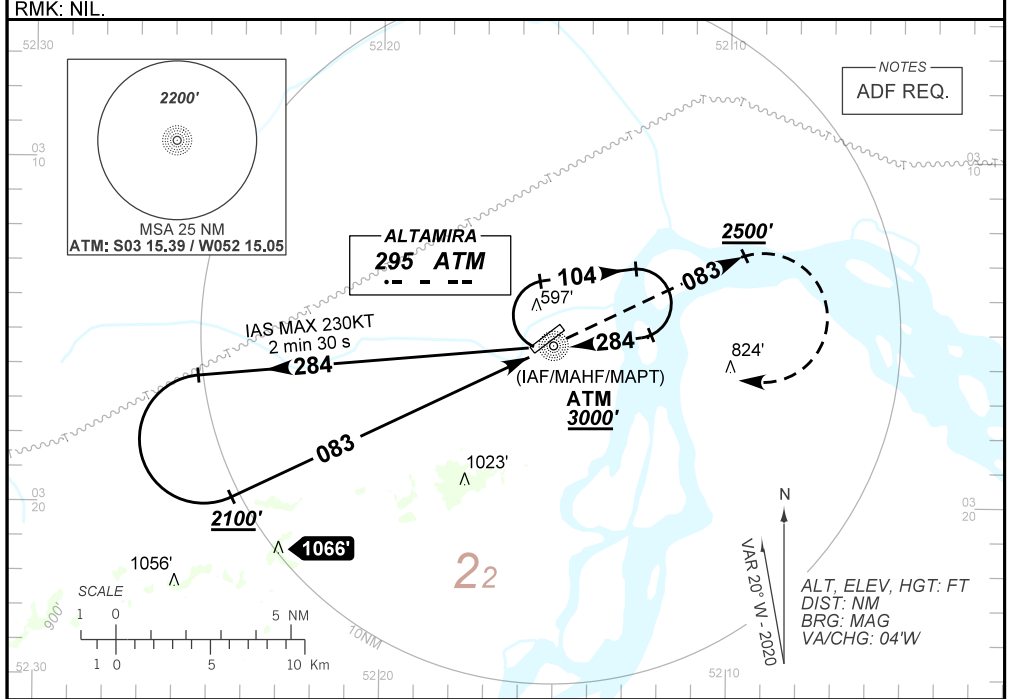
**AD ELEV: 368'**

**NDB RWY 07**

<b>ATIS</b> <b>NIL</b>	<b>APP</b> <b>NIL</b>		<b>AFIS ALTAMIRA</b> <b>125.85</b>	<b>GNDC</b> <b>NIL</b>
<b>NDB ATM</b> <b>295 KHz</b>	<b>FINAL CRS</b> <b>083°</b>	<b>N/A</b>	<b>N/A</b>	<b>NDB</b> <b>MDA / (OCH): 1360' / (1000')</b>

**APCH Perdida:** Subir para **3000'**. Manter QDR **083** do NDB ATM até **2500'**. Após, curvar à DIREITA direto NDB ATM para espera.  
**Missed APCH:** Climb to **3000'**. Maintain **083** QDR ATM NDB until **2500'**. After, turn **RIGHT** direct to ATM NDB for holding.

**RMK:** NIL.



<b>TA 4000'</b>	<b>IAF/MAHF/MAPT ATM 3000'</b>	<b>THR ELEV 368'</b>
-----------------	--------------------------------	----------------------

<b>NIL</b>	<b>RWY07</b>	<b>KT</b>	<b>090</b>	<b>110</b>	<b>130</b>	<b>160</b>	<b>170</b>	<b>190</b>
<b>NIL</b>	<b>ALT (HGT)</b>	<b>FPM</b>	<b>650</b>			<b>NA</b>		
<b>NIL</b>	<b>(HGT)</b>	<b>FAF-MAPT</b>	<b>NA</b>					

STRAIGHT-IN	CAT	A	B	C	D	E
<b>NDB</b>	<b>MDA / (OCH)</b>	<b>1360' / (1000')</b>				<b>NA</b>
	<b>ALS/NO ALS/ RVR ALS (m)</b>	<b>NIL / 2000 / NIL</b>	<b>NIL / 2400 / NIL</b>	<b>NIL / 4500 / NIL</b>		
<b>CIRCLING</b>	<b>MDA / (OCH)</b>	<b>NA</b>				
	<b>VIS (m)</b>	<b>NA</b>				

CHANGES: LAYOUT, MDA, PROC. TA, THEL, VIS.