

INSTRUMENT APPROACH
CHART (IAC)

ITAITUBA / Itaituba (SBIH)

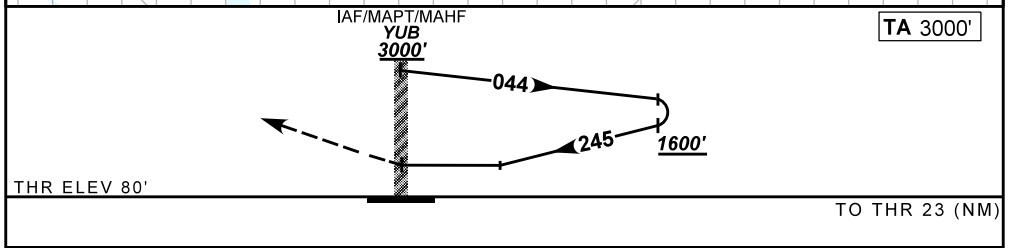
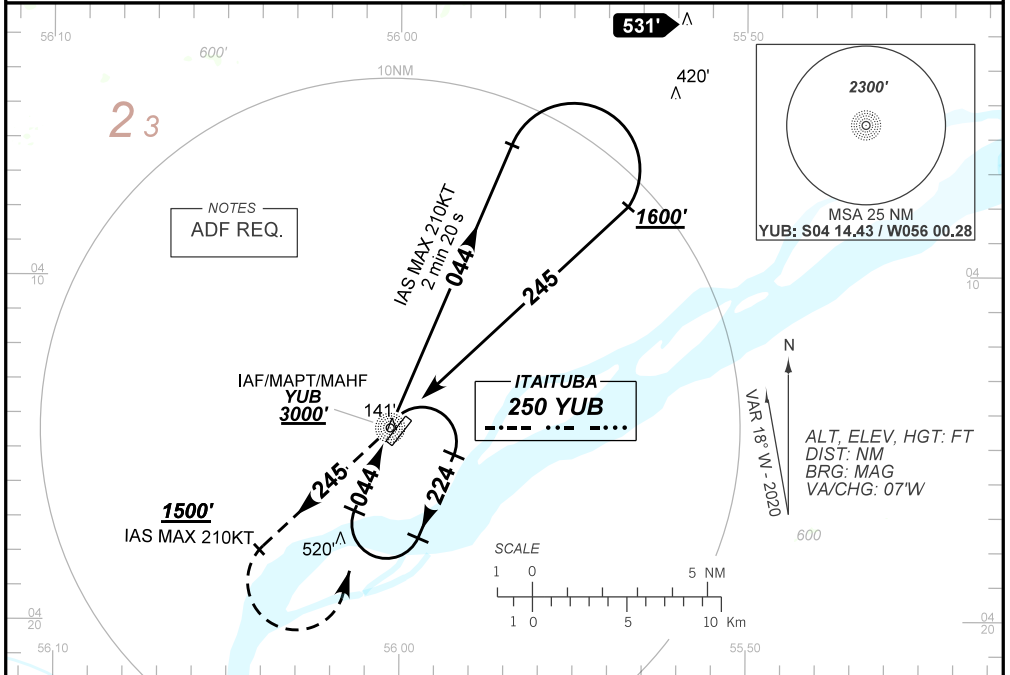
AD ELEV: 99'

NDB Y RWY 23

ATIS NIL	APP NIL	AFIS ITAITUBA 125.50	GNDC NIL
NDB YUB 250 KHz	FINAL CRS 245°	NA	NDB MDA / (OCH): 720' / (640')

APCH Perdida: 1) Subir para **3000'**. Manter QDR **245** do NDB YUB até cruzar **1500'**. Então, curvar à esquerda, direto NDB YUB para espera.
Missed APCH: 1) Climb to **3000'**. Maintain **245** QDR YUB NDB until passing **1500'**. Then, turn left direct to YUB NDB for holding.

RMK: NIL.



RWY23	NA	KT	090	110	130	150	170	190
ALT	NA	FPM	655			NA		
(HGT)	NA	FAF-MAPT	NA					

STRAIGHT-IN	CAT	A	B	C	D	E
NDB	MDA / (OCH)	720' / (640')				NA
	ALS/NO ALS/ RVR ALS (m)	NIL / 1600 / NIL		NIL / 2900 / NIL		
CIRCLING	MDA / (OCH)	NA				
	VIS (m)					

CHANGES: LAYOUT, PROC.