

INSTRUMENT APPROACH
CHART (IAC)

FOZ DO IGUAÇU / Cataratas, INTL (SBFI)

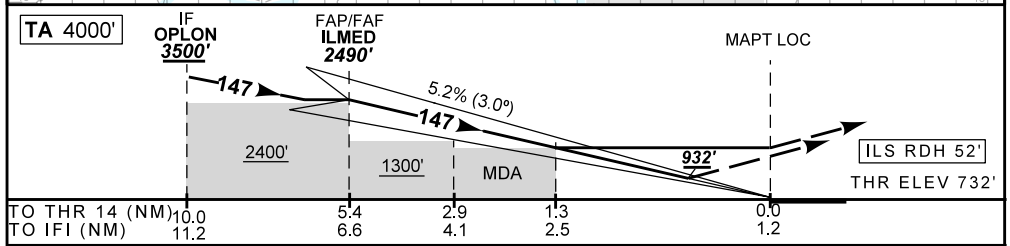
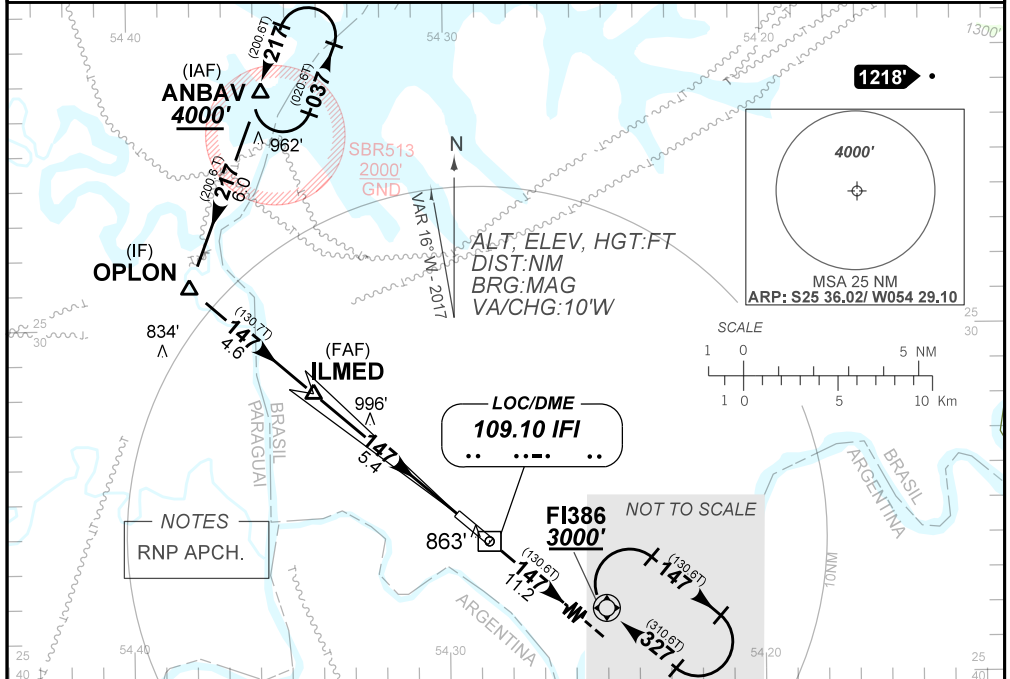
AD ELEV: 787'

ILS X or LOC X RWY 14

D-ATIS	APP FOZ 119.15 120.30 121.50		TWR FOZ 118.80	GNDC NIL
LOC IFI 109.10 MHz	FINAL CRS 147°	FAF: 2490'	CAT I DA / (OCH): 932' (200')	LOC only: MDA / (OCH): 1100'(370')

APCH Perdida: Subir para **3000'**. Manter rumo **147** até FI386 para espera.
Missed APCH: Climb to **3000'**. Maintain course **147** up to FI386 for holding.

RMK: NIL.



ILMED	4.0	3.0	2.0	1.0	0.5	RWY 14	KT	090	110	130	150	170	190
2490	2058	1740	1421	1100	932	ALT	FPM	500	600	700	800	900	NA
1758	1326	1007	689	370	200	(HGT)	FAF-MAPT	NIL					

STRAIGHT-IN	CAT	A	B	C	D	E
	DA / (OCH) / TETO	932' / (200') / 200'				NA
LOC	ALS/NO ALS/ RVR ALS (m)	800 / 1200 / 700				
	MDA / (OCH) / TETO	1100' / (370') / 400'				
CIRCLING	ALS/NO ALS/ RVR ALS (m)	800 / 1600 / NIL		1000 / 1700 / NIL		
	MDA / (OCH) / TETO	NA				
	VIS (m)					

CHANGES: F. MSA. PROC.

AIRAC AMDT 18/17 12 OCT 17

DEPARTAMENTO DE CONTROLE DO ESPAÇO AÉREO

SBFI_IAC_00K 1
IAC ILS X or LOC X RWY 14