

**CARTA DE APROXIMAÇÃO  
POR INSTRUMENTOS (IAC)**

**SALVADOR / Deputado Luís Eduardo Magalhães, INTL (SBSV)**

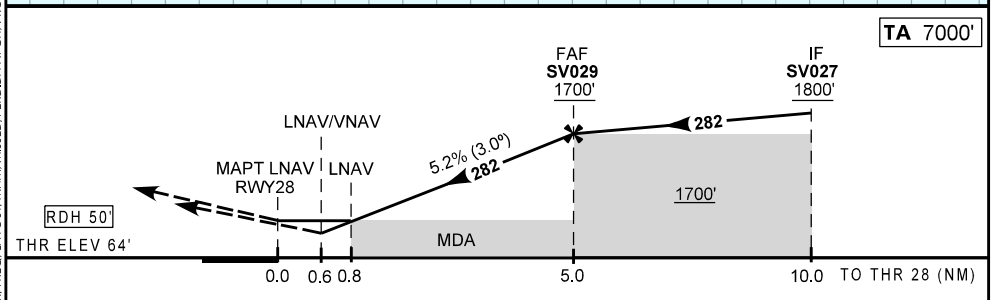
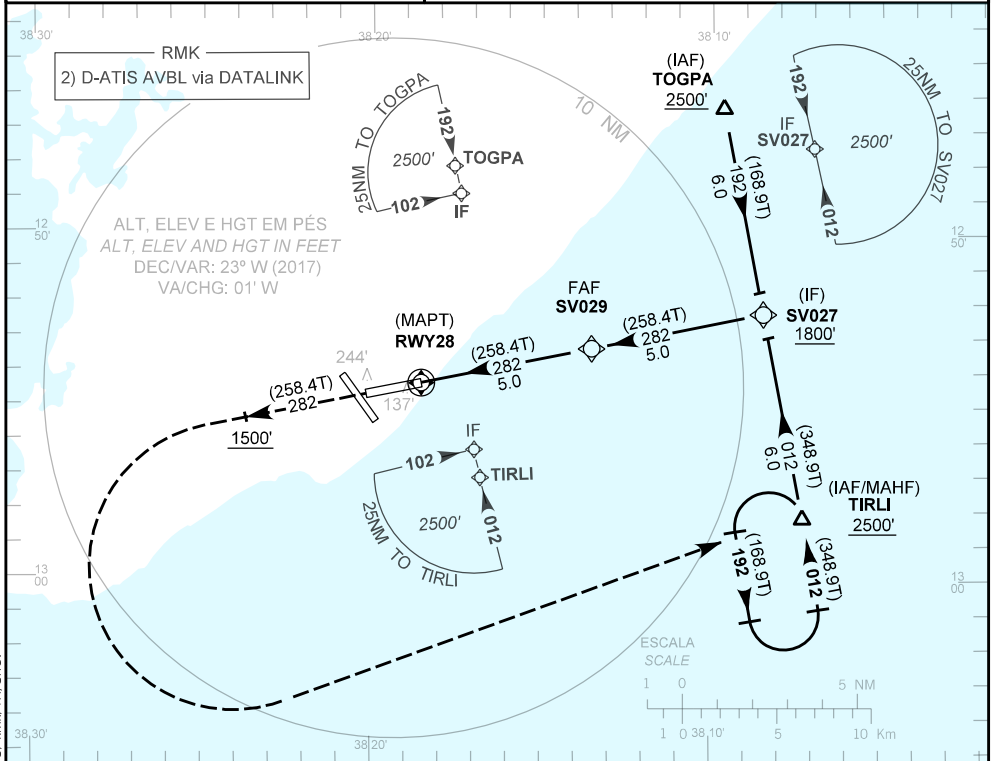
INSTRUMENT APPROACH CHART (IAC)

**RNAV(GNSS) RWY 28**

AD ELEV: 66'	ATIS 127.75	APP SALVADOR 119.35 119.80 120.80 129.45	TWR SALVADOR 118.30 118.60 118.95 121.10 121.50	GNDCL SALVADOR 121.90
--------------	----------------	---	---	--------------------------

RMK: 1) ACFT não compensadas Baro-VNAV, LNAV/VNAV NÃO AUTORIZADO abaixo de 0°C e acima de 46°C.  
 1) For uncompensated systems, LNAV/VNAV NOT AUTHORIZED below 0° C or above 46°C.

Aproximação Perdida: Subir para 2500'. Manter rumo 282 até cruzar 1500'. Então, curvar à esquerda direto TIRLI para Espera.  
 Missed Approach: Climb to 2500'. Maintain course 282 until passing 1500'. Then, turn left direct to TIRLI for holding.



RWY28	0.8	1.0	2.0	3.0	4.0	FAF	KT	090	110	130	150	170	190
ALT	370	434	753	1071	1390	1700	FPM	500	600	700	800	900	NA
(HGT)	310	368	687	1005	1324	1634	FAF-MAPT	NA					

POUSO DIRETO STRAIGHT-IN	CAT	A	B	C	D	E	
	DA / OCH / TETO	315 / 250 / 300					NA
LNAV/VNAV	ALS/NO ALS/ RVR ALS (m)	NIL / 1300 / NIL					
LNAV	MDA / OCH / TETO	370 / 310 / 400					
CIRCULAR TO CIRCLE	MDA / OCH / TETO	NIL / 1600 / NIL					NA
	VIS (m)						

MODIFICAÇÕES / CHANGES: ADEL, DEC/VAR, FREQ, LA, YOUT, MINV, MISSED/PERDIDA APCH, PROC, RMK, VA/CHG.