

CARTA DE APROXIMAÇÃO
POR INSTRUMENTOS (IAC)

SALVADOR / Deputado Luís Eduardo Magalhães, INTL (SBSV)

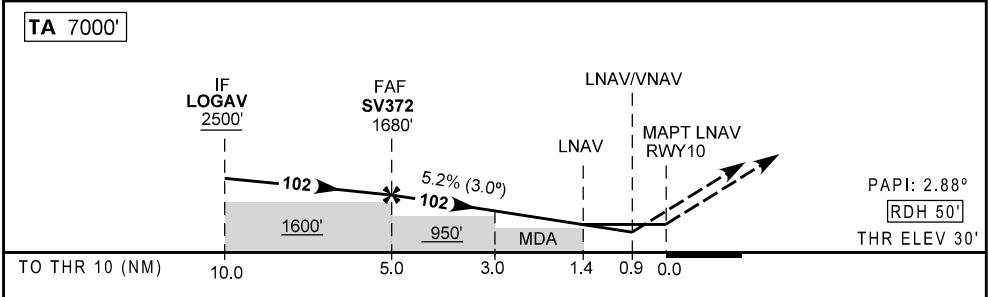
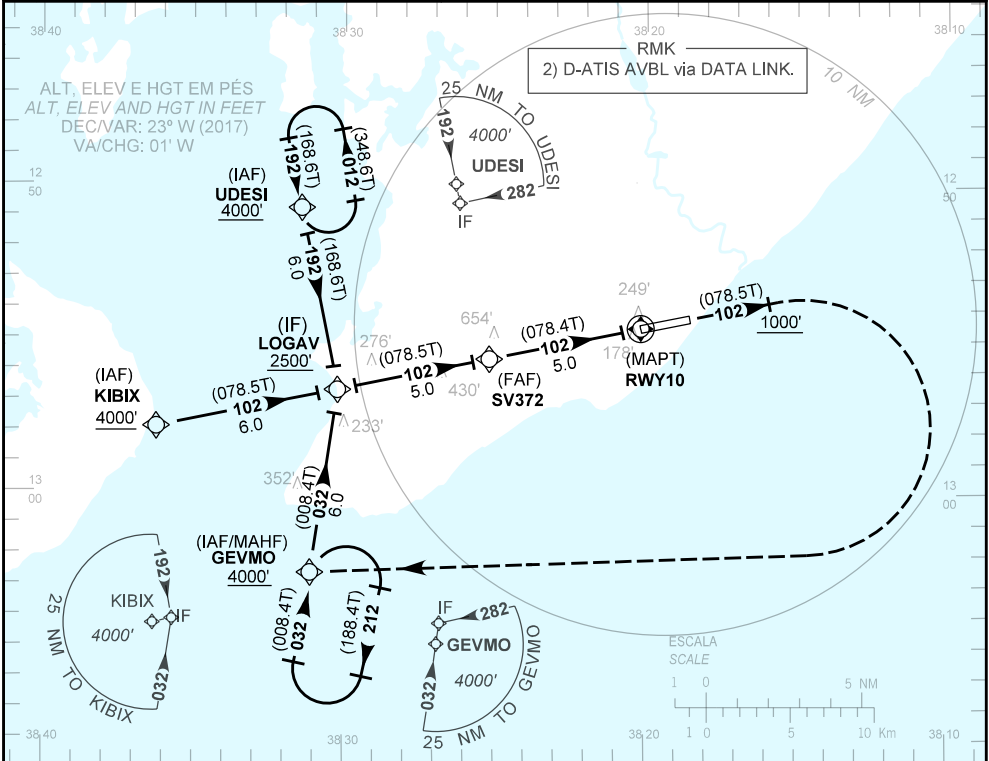
INSTRUMENT APPROACH CHART (IAC)

RNAV(GNSS) RWY 10

AD ELEV: 66'	ATIS 127.75	APP SALVADOR 119.35 119.80 120.80 129.45	TWR SALVADOR 118.30 118.60 118.95 121.10 121.50	GNDC SALVADOR 121.90
--------------	----------------	---	---	-------------------------

RMK: 1) ACFT não compensadas Baro-VNAV, LNAV/VNAV NÃO AUTORIZADO abaixo de 0°C e acima de 46°C.
1) For uncompensated systems, LNAV/VNAV NOT AUTHORIZED below 0° C or above 46°C.

Aproximação Perdida: Subir para 4000'. Manter rumo 102 até cruzar 1000'. Então, curvar à direita direto GEVMO para Espera.
Missed Approach: Climb to 4000'. Maintain course 102 until passing 1000'. Then, turn right direct GEVMO for holding.



SV372	4.0	3.0	2.0	1.4	RWY10	KT	090	110	130	150	170	190
1680	1354	1035	717	520	ALT	FPM	500	600	700	800	900	NA
1650	1324	1005	687	490	(HGT)	FAF-MAPT	NA					

POUSO DIRETO STRAIGHT-IN	CAT	A	B	C	D	E
	DA / OCH / TETO	429 / 400 / 400				
LNAV/VNAV	ALS/NO ALS/RVR ALS (m)	NIL / 1600 / NIL		NIL / 1800 / NIL		
	MDA / OCH / TETO	520 / 490 / 500				
LNAV	ALS/NO ALS/RVR ALS (m)	NIL / 1600 / NIL		NIL / 2300 / NIL		
	MDA / OCH / TETO	NA				
CIRCULAR TO CIRCLE	VIS (m)	NA				

MODIFICAÇÕES / CHANGES: FREQ. LAYOUT, MIN. OPR. RMK. TA.